

## Archdale Place New Malden KT3

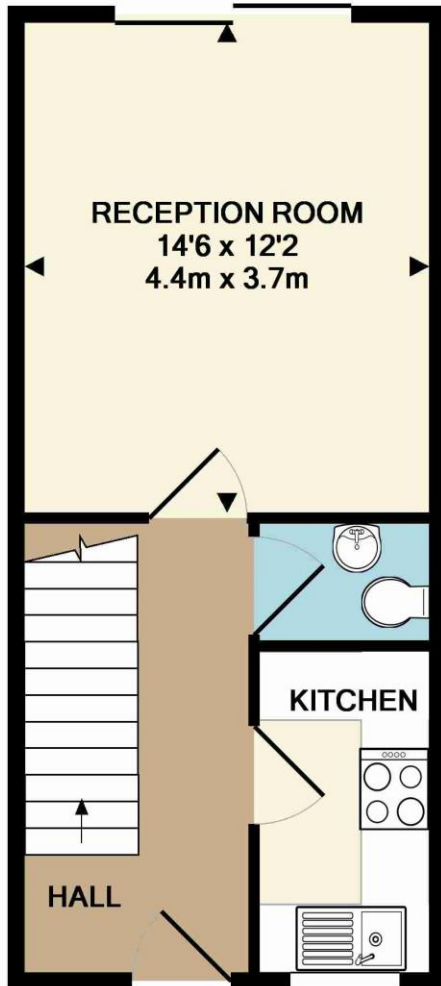


- **Modern Family Home**
- **Two Double Bedrooms**
- **Private Garden**
- **Private Parking**
- **Ideal for Sharers**

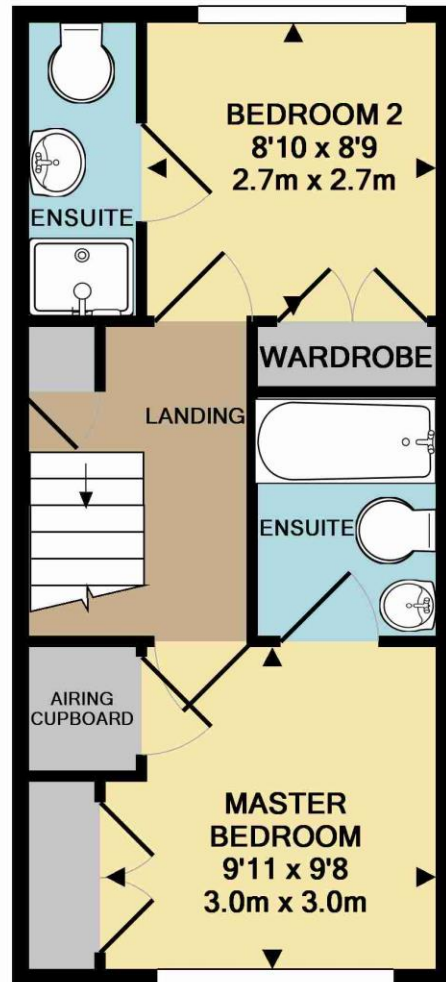
**Price £2,500 pcm**

Groves Residential are pleased to present to the Lettings marking this good sized, modern, two bedroom family home. The ground floor of the property comprises a fully fitted kitchen, w/c and reception room opening out onto a private garden. Upstairs has two double bedrooms, both with en suite bathrooms and ample built in storage space. Viewings highly recommended - would suit a family or professional sharers! Available middle of September. EPC rating C. Council tax band E. Security deposit £2,884 (based on the asking price).





GROUND FLOOR  
 APPROX. FLOOR  
 AREA 339 SQ.FT.  
 (31.5 SQ.M.)



1ST FLOOR  
 APPROX. FLOOR  
 AREA 340 SQ.FT.  
 (31.6 SQ.M.)

TOTAL APPROX. FLOOR AREA 680 SQ.FT. (63.1 SQ.M.)

Whilst every attempt has been made to ensure the accuracy of the floor plan contained here, measurements of doors, windows, rooms and any other items are approximate and no responsibility is taken for any error, omission, or mis-statement. This plan is for illustrative purposes only and should be used as such by any prospective purchaser. The services, systems and appliances shown have not been tested and no guarantee as to their operability or efficiency can be given

Made with Metropix ©2016



