

Kings Road London SW6



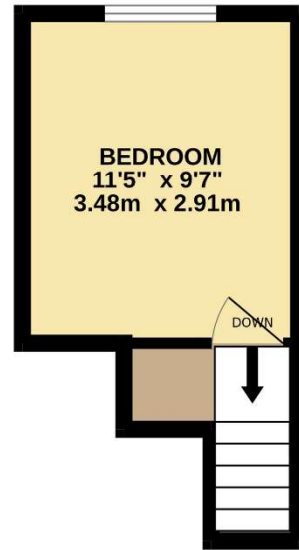
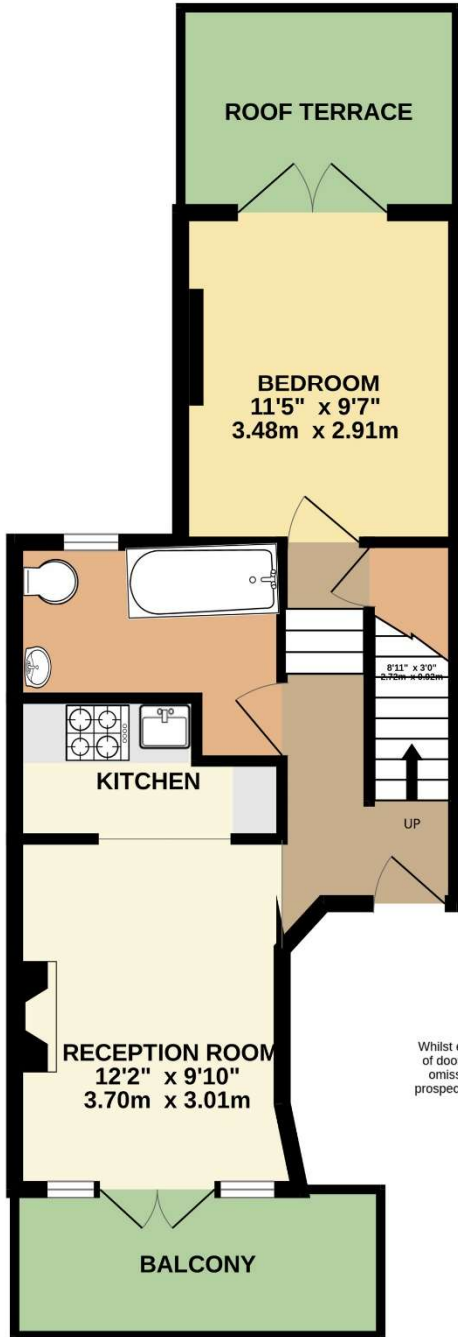
- **Two Double Bedrooms**
- **Balcony and Roof Terrace**
- **Good Size Reception**
- **Available Late August**
- **Split-Level Apartment**
- **Excellent, Convenient Location**

Price £2,600 pcm

A split-level apartment set in this excellent location. The property has a reception room with a feature fireplace and also opens out to a balcony at the front and a fitted kitchen to the rear and there are also two double bedrooms, one of which opens out to a private roof terrace and a large bathroom which also houses the washing machine. The flat is ideally located for an array of shops and restaurants and it will be furnished and available from late August. Security deposit £3,000 (based on asking price). Council tax band D. EPC rating D

1ST FLOOR

2ND FLOOR



KINGS ROAD, FULHAM SW6

TOTAL FLOOR AREA : 532sq.ft. (49.4 sq.m.) approx.

Whilst every attempt has been made to ensure the accuracy of the floorplan contained here, measurements of doors, windows, rooms and any other items are approximate and no responsibility is taken for any error, omission or mis-statement. This plan is for illustrative purposes only and should be used as such by any prospective purchaser. The services, systems and appliances shown have not been tested and no guarantee as to their operability or efficiency can be given.
Made with Metropix ©2023



