

Grafton Road New Malden KT3



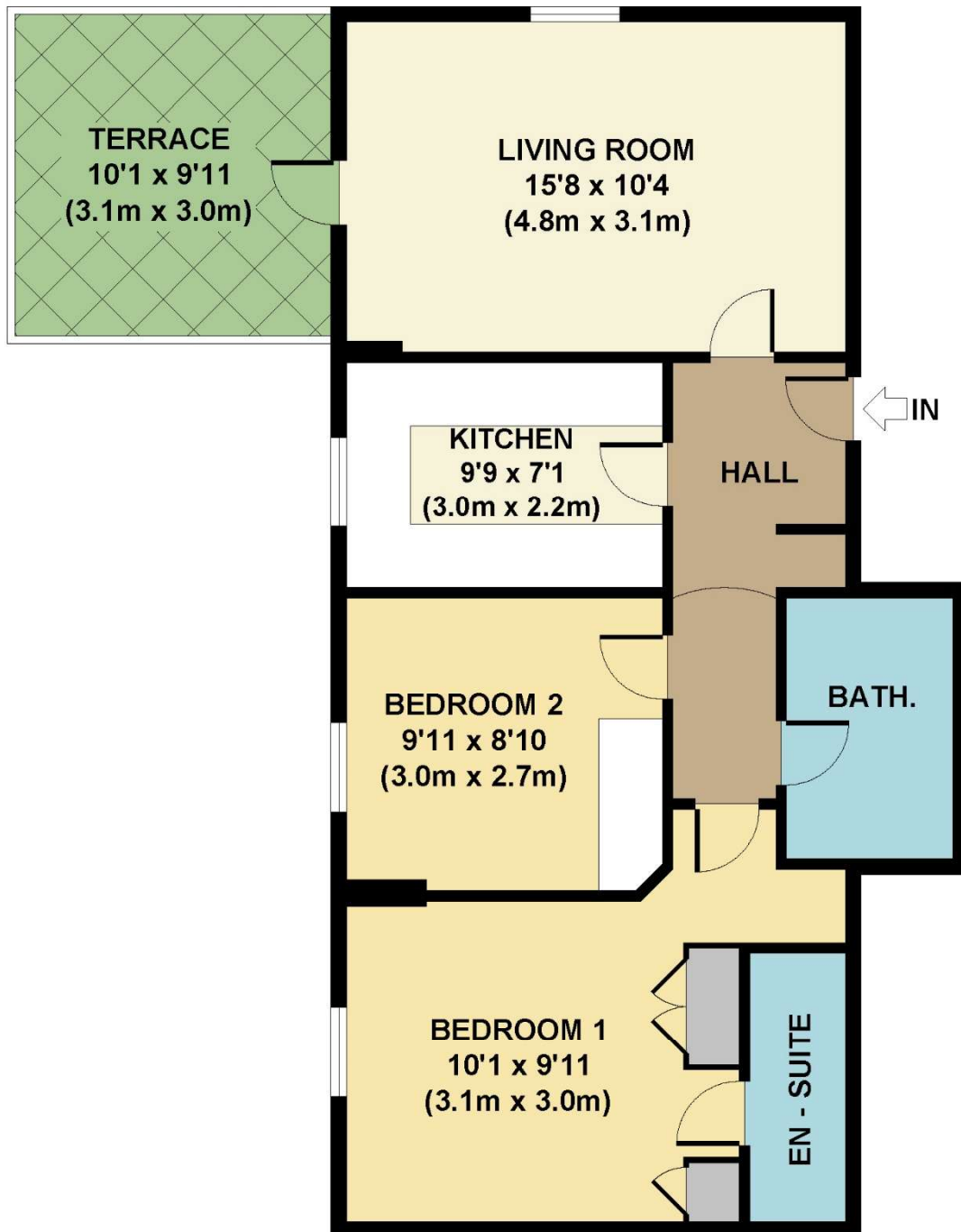
- **Two Double Bedrooms**
- **Two Bathrooms**
- **Private Terrace**
- **Parking**
- **Central Location**
- **Close to Excellent Transport Links**

Price £395,000

A beautifully presented, modern two bedroom top floor flat with its own private terrace. The property forms part of a small development, a stone throw from New Malden Station and High Street. Comprising a bright main reception with access onto the terrace, a modern fully fitted kitchen with built in appliances, a master bedroom with en suite shower plus a second double bedroom and family bathroom. In addition, the property has private parking. EPC Rating C. Council Tax Band D. This flat will suit a First Time Buyer or Investor No onward chain.







**GROUND FLOOR
GROSS INTERNAL
FLOOR AREA 618 SQ FT**

APPROX. GROSS INTERNAL FLOOR AREA 618 SQ FT / 57 SQ M
Floorplans are for identification and guideline purposes only, not to scale.
Compliant with RICS code of measuring practice.
Floorplans supplied by www.draftingfloorplan.com