

## Barnard Gardens New Malden KT3



- **Bright Two Bedroom Ground Floor Flat**
- **Newly Refurbished Throughout**
- **Modern Fully Fitted Kitchen**
- **Off-Street Parking**
- **Private Garden**
- **Close to Excellent Transport Links**

**Price £370,000**

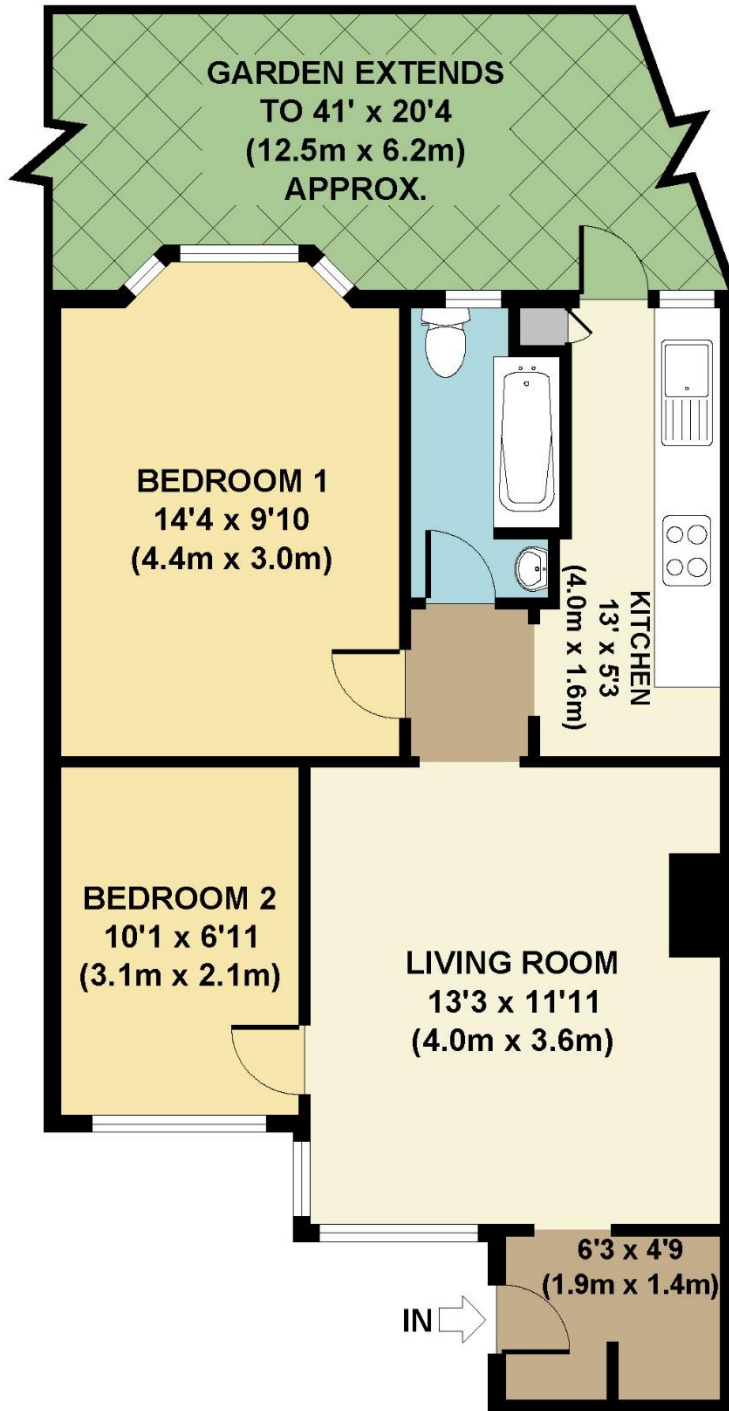
A newly refurbished bright two bedroom ground floor maisonette which has been refurbished throughout to a high standard. The property has a spacious reception room leading to a second bedroom/office, a modern fully fitted kitchen with access to a good sized rear garden with a decked area and lawn, a good sized double bedroom and modern bathroom with shower. There is also off-street parking at the front of the property. Located close to good transport links and within easy walking distance of Motspur Park Station. Ideal property for a First Time Buyer or investor. No onward chain. EPC rating C. Council Tax Band C.











**GROUND FLOOR  
GROSS INTERNAL  
FLOOR AREA 525 SQ FT**

**APPROX. GROSS INTERNAL FLOOR AREA 525 SQ FT / 49 SQ M**  
**Floorplans are for identification and guideline purposes only, not to scale.**  
**Compliant with RICS code of measuring practice.**  
**Floorplans supplied by [www.draftingfloorplan.com](http://www.draftingfloorplan.com)**