

Lime Grove New Malden KT3

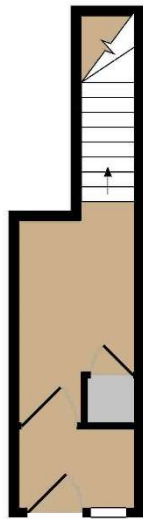


- **Three/Four Bedroom Period Property**
- **Large South Facing Living Room**
- **Fitted Kitchen/Breakfast Room**
- **Private Rear Garden**

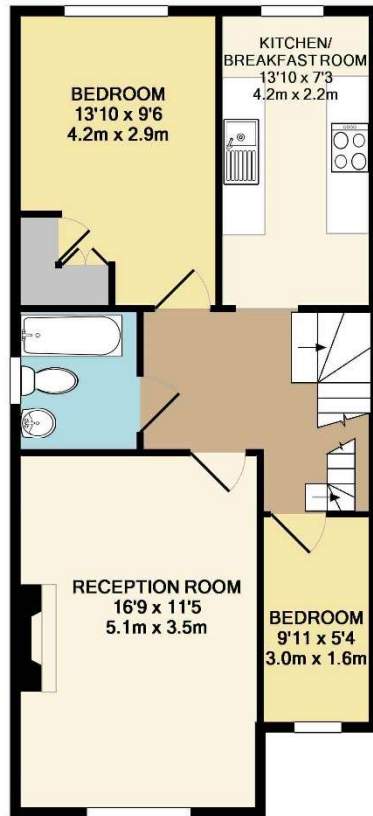
Price £2,300 pcm

Located in the heart of the "Groves" area of New Malden, this beautifully presented, split-level maisonette has a wealth of charm and character. The roomy accommodation comprises a large, south facing living room with wonderful high ceilings, a fitted kitchen/breakfast room, two bedrooms and a bathroom on the first floor and two further bedrooms on the second floor; one which has an en-suite shower room. There is also the added advantage of a private rear garden and a private entrance. Lime Grove is ideally located for many of the local amenities with both the station and High Street a short walk away. The property is available early September and is unfurnished. Security deposit £2,653 (based on the asking price). Council tax band C. EPC rating C.

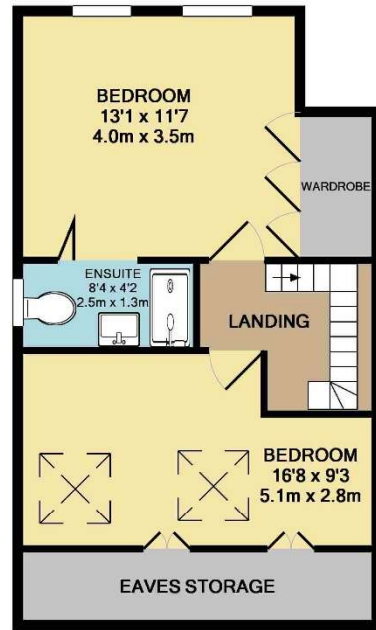




GROUND FLOOR



1ST FLOOR



2ND FLOOR

TOTAL APPROX. FLOOR AREA 701 SQ.FT. (65.1 SQ.M.)

Whilst every attempt has been made to ensure the accuracy of the floor plan contained here, measurements of doors, windows, rooms and any other items are approximate and no responsibility is taken for any error, omission, or mis-statement. This plan is for illustrative purposes only and should be used as such by any prospective purchaser. The services, systems and appliances shown have not been tested and no guarantee as to their operability or efficiency can be given
Made with Metropix ©2019





