

Sherfield Close New Malden KT3



- **Two Double Bedrooms**
- **Large Reception**
- **Superb Views**
- **Parking**
- **Excellent Transport Links**

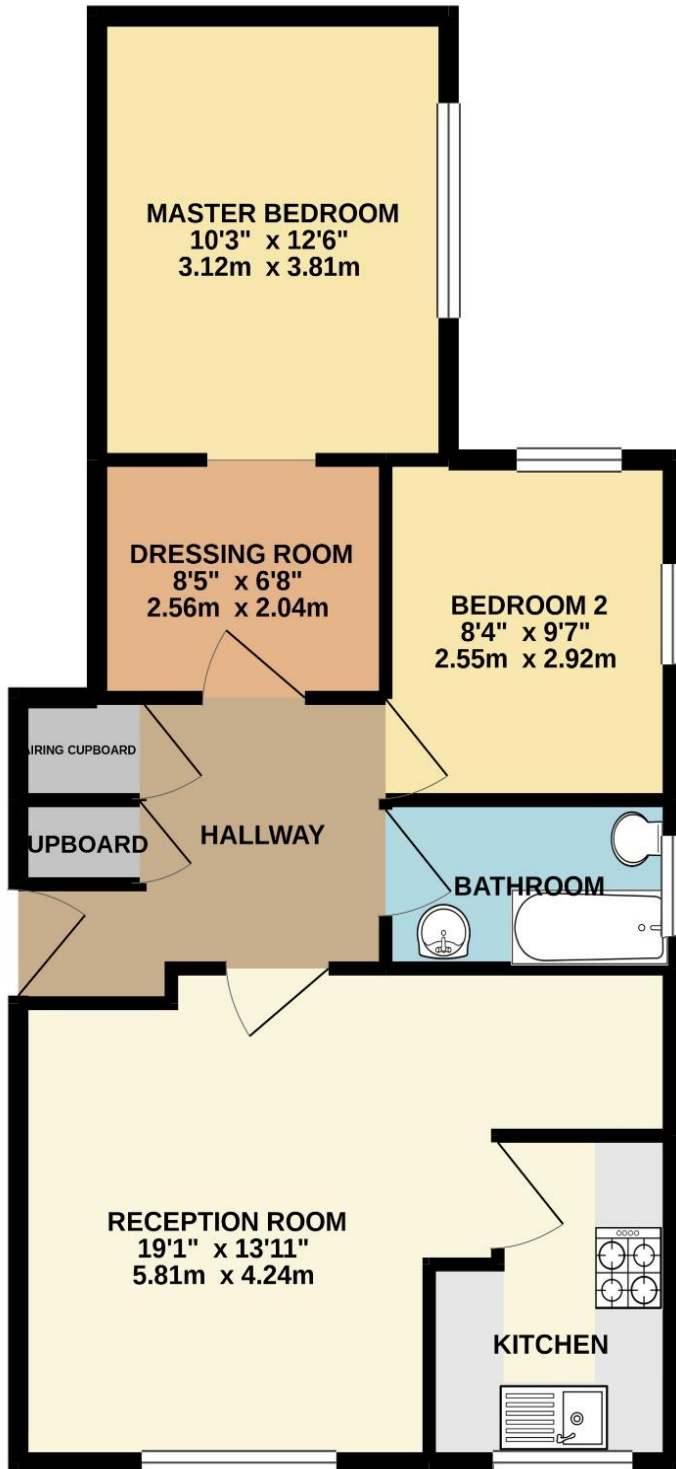
Price £335,000

A two double bedroom second floor flat in a purpose built development with stunning views, communal gardens and private parking. The property has been neutrally decorated throughout. The spacious reception room benefits from a large window which brings a lot of natural light. There is a fully fitted kitchen and a modern bathroom. There is a spacious master bedroom with separate dressing area with space for wardrobes. It is located within close proximity to local shops, transport, parks and easy access to A3. EPC rating D. Council Tax Band C.





SECOND FLOOR
651 sq.ft. (60.5 sq.m.) approx.



TOTAL FLOOR AREA : 651 sq.ft. (60.5 sq.m.) approx.

Whilst every attempt has been made to ensure the accuracy of the floorplan contained here, measurements of doors, windows, rooms and any other items are approximate and no responsibility is taken for any error, omission or mis-statement. This plan is for illustrative purposes only and should be used as such by any prospective purchaser. The services, systems and appliances shown have not been tested and no guarantee as to their operability or efficiency can be given.

Made with Metropix ©2021