

Burlington Road New Malden KT3

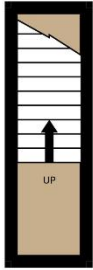


- **Great Location**
- **Two Double Bedrooms**
- **Private Rear Garden**
- **Modern Fitted Kitchen**

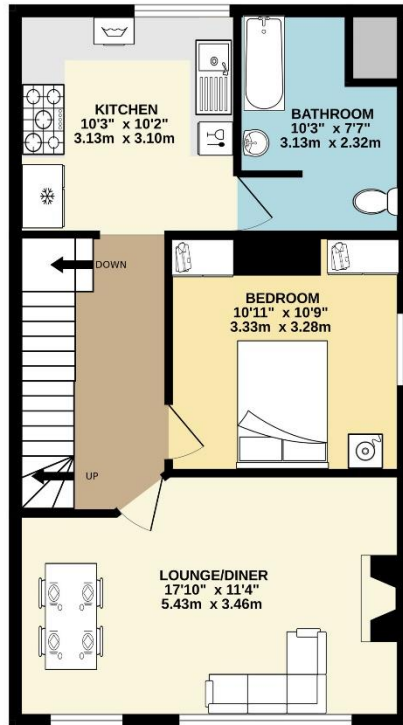
Price £1,750 pcm

A well presented two double bedroom split level flat with private garden located on the popular Burlington Road. The property has a modern fitted kitchen with American fridge, dishwasher and electric range, a modern bathroom with storage, two double bedrooms one of which has fitted wardrobes and the other room has a free standing wardrobe. There is also a good sized living room with space for a table and chairs and storage. The large garden with storage is located to the rear of the property and is a perfect sun trap. This is available now and either part furnished or unfurnished. Council tax band C. EPC rating D. Security Deposit £2,019.

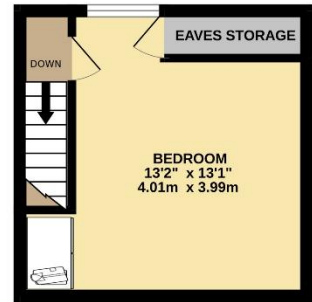
GROUND FLOOR
40 sq.ft. (3.7 sq.m.) approx.



FIRST FLOOR
505 sq.ft. (46.5 sq.m.) approx.



SECOND FLOOR
172 sq.ft. (15.9 sq.m.) approx.



TOTAL FLOOR AREA: 778 sq.ft. (72.2 sq.m.) approx.

Whilst every attempt has been made to ensure the accuracy of the floorplan contained here, measurements of doors, windows, rooms and any other items are approximate and no responsibility is taken for any error, omission or mis-statement. This plan is for illustrative purposes only and should be used as such by any prospective purchaser. The services, systems and appliances shown have not been tested and no guarantee as to their operability or efficiency can be given.

Made with Metropix ©2024





