

Highbury Close New Malden KT3

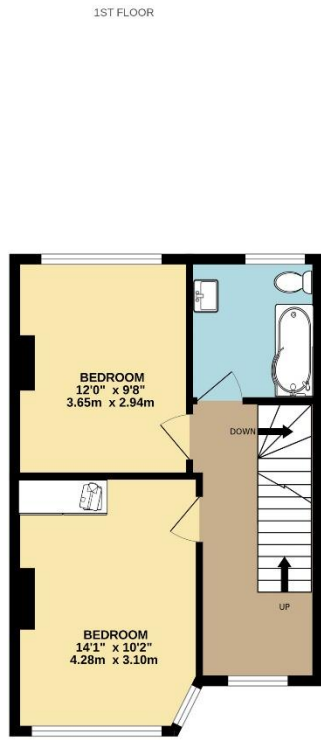
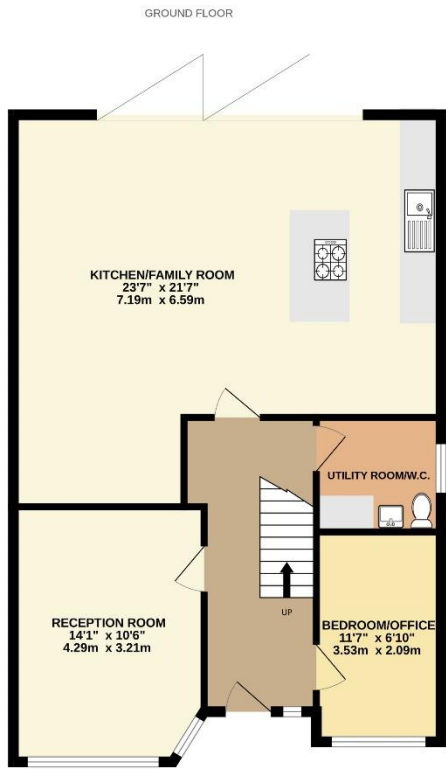


- **Stunning Kitchen/Family Room**
- **Four Bedrooms**
- **Two Bathrooms plus Cloakroom**
- **Parking for Two Cars**
- **Popular Cul de Sac Location**
- **Available in August**

Price £3,400 pcm

Set on this popular cul de sac, a magnificent semi-detached family home offered for rental in superb condition throughout. The accommodation comprises a stunning kitchen/family room, a further reception room to the front, four bedrooms, two bathroom (one en suite) and a further utility/cloakroom; there is also parking at the front for two cars and a wonderful garden to the rear. The property is offered as part-furnished and available in August. Security deposit £3,923. Council tax band E. EPC rating C.





TOTAL FLOOR AREA: 1580sq.ft. (146.8 sq.m.) approx.

Whilst every attempt has been made to ensure the accuracy of the floorplan contained here, measurements of doors, windows, rooms and any other items are approximate and no responsibility is taken for any error, omission or mis-statement. This plan is for illustrative purposes only and should be used as such by any prospective purchaser. The services, systems and appliances shown have not been tested and no guarantee as to their operability or efficiency can be given.
Made with Metropix ©2024

