

Penrith Road New Malden KT3

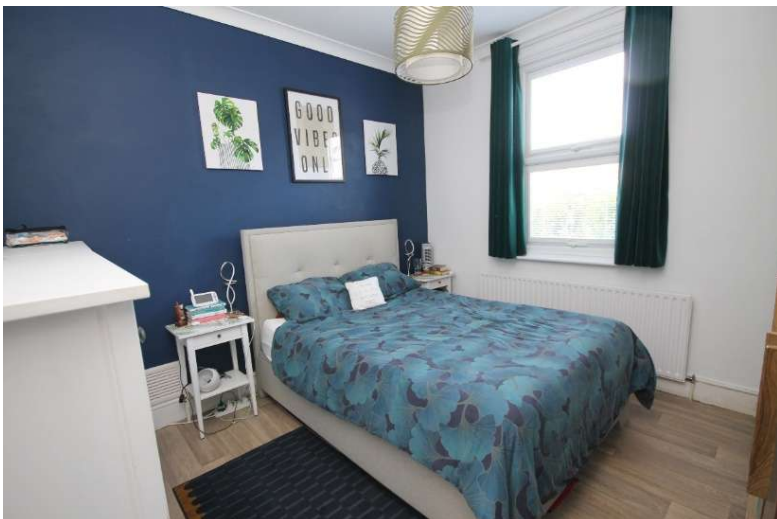


- **Exceptional Two Bedroom Ground Floor Period Property**
- **Superb High Ceilings**
- **Modern Fully Fitted Kitchen with Breakfast Bar**
- **West Facing Private Garden**
- **Garden Office/Studio Room**
- **Allocated Parking Space**
- **Easy Walking Distance of New Malden**
- **Share of Freehold**

Price £515,000

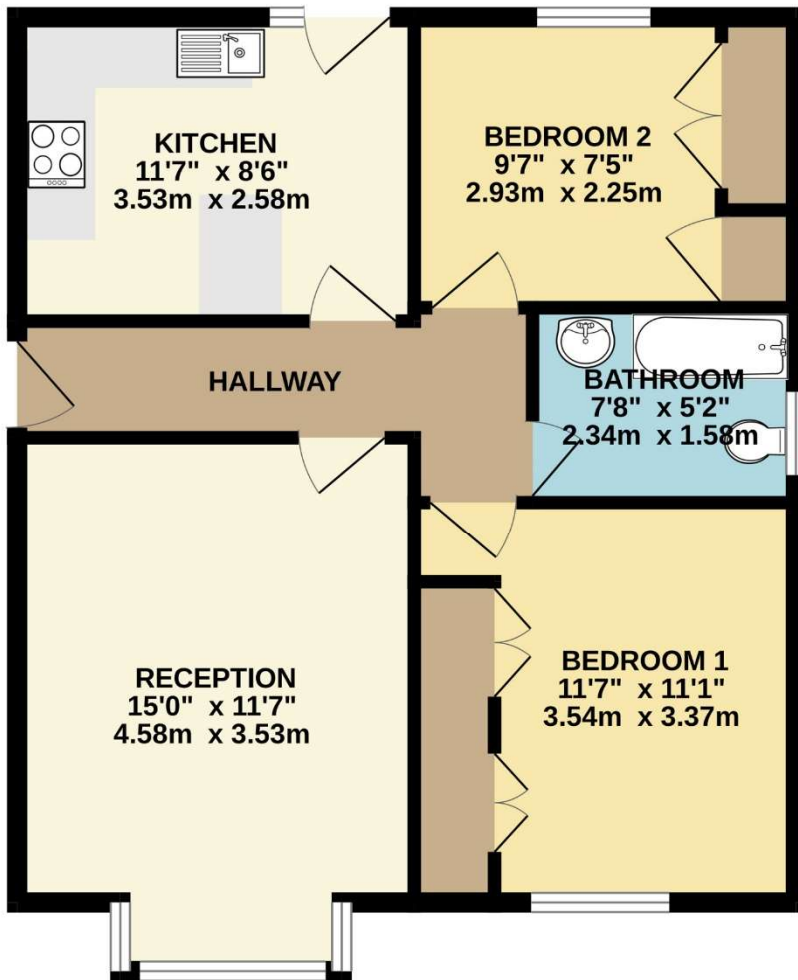
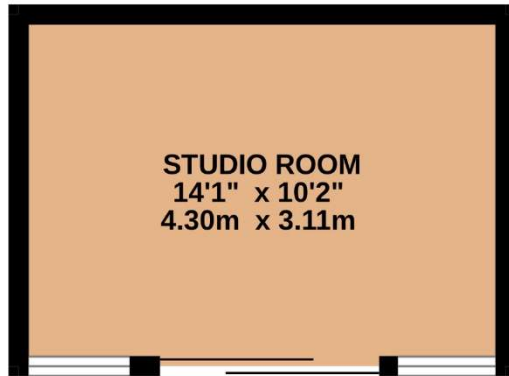
An exceptional ground floor flat with direct access to a beautiful private West facing garden with a good-sized Garden Office/Studio Room. The property comprises a central hallway with the main reception room with high ceilings and large bay window, a modern fully fitted kitchen with breakfast bar and a door to the garden. There is a master bedroom, with built in wardrobes, a second bedroom ideal for a study or nursery, with more fitted storage and a family bathroom. In addition, there is allocated parking behind the building and it benefits from a private side entrance to the rear. The property is located within a short distance of New Malden High Street and Station with excellent transport links to Central London. Ideal for a First Time Buyer or someone downsizing. Council Tax Band C. EPC Rate D.







GROUND FLOOR



TOTAL FLOOR AREA : 737sq.ft. (68.4 sq.m.) approx.

Whilst every attempt has been made to ensure the accuracy of the floorplan contained here, measurements of doors, windows, rooms and any other items are approximate and no responsibility is taken for any error, omission or mis-statement. This plan is for illustrative purposes only and should be used as such by any prospective purchaser. The services, systems and appliances shown have not been tested and no guarantee as to their operability or efficiency can be given.

Made with Metropix ©2024