

Lime Grove New Malden KT3



- **Extremely Pretty Four Bedroom Period House**
- **Situated on a Corner Plot**
- **Spacious Ground Floor Accommodation**
- **Period Features**
- **Off Street Parking for Several Cars**
- **Within the Catchment for Excellent Schools**

Price £1,000,000

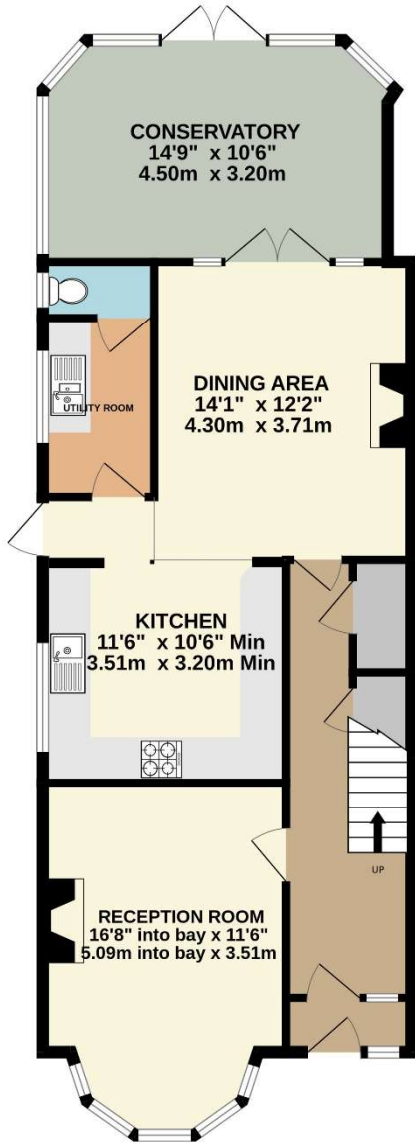
An extremely pretty period house, set on a corner plot with large bay window to the front, offering excellent space throughout for a growing family. The property has a spacious entrance hall, front reception with high ceilings and feature fireplace, a second reception room currently used a dining room which opens onto a fully fitted kitchen with ample storage and a conservatory which leads into a well maintained garden with paving and grassed area. There is also a utility room and downstairs W.C. On the first floor there is a bright master bedroom with double aspect, two further double bedrooms, a single/study and a family bathroom with separate shower. In addition the property has side access and off street parking for several cars. Ideally located within the ever popular "Groves" area of New Malden within the catchment of excellent schools and easy walking distance of both the High Street and Station. EPC rate E.



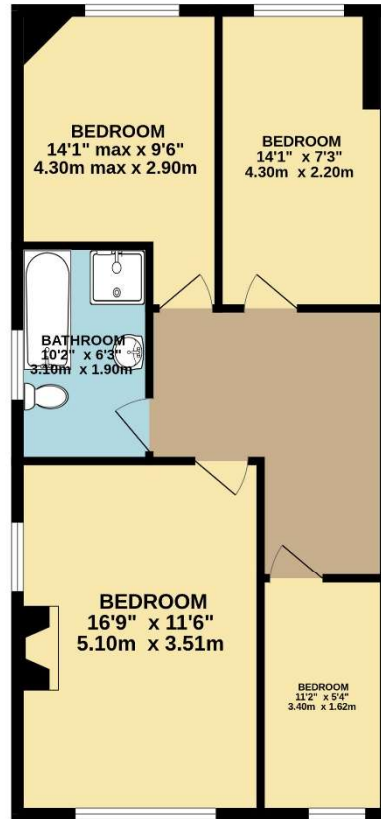




GROUND FLOOR



1ST FLOOR



TOTAL FLOOR AREA : 1483 sq.ft. (137.8 sq.m.) approx.

Whilst every attempt has been made to ensure the accuracy of the floorplan contained here, measurements of doors, windows, rooms and any other items are approximate and no responsibility is taken for any error, omission or mis-statement. This plan is for illustrative purposes only and should be used as such by any prospective purchaser. The services, systems and appliances shown have not been tested and no guarantee as to their operability or efficiency can be given.
Made with Metropix ©2024