



Osbornes
Independent estate agents
FOR SALE

46

Osbornes
Independent estate agents

Netley Street | Farnborough

Located within the South Farnborough conservation area, this Victorian semi-detached residence completely refurbished boasts two double bedrooms, three reception rooms, and is impe

Semi Detached | Two Double Bedrooms | Three Reception Rooms | Modern Kitchen with Quartz Top | Modern Bathroom | Enclosed Rear Garden

£450,000 | Freehold

Located within the South Farnborough conservation area, this Victorian semi-detached residence completely refurbished boasts two double bedrooms, three reception rooms, and is impeccably presented. The property features a modern kitchen breakfast/family room with integrated dishwasher, fridge/freezer, washer dryer and stainless steel range cooker, downstairs cloakroom, a recently refitted contemporary four-piece bathroom suite with feature roll top

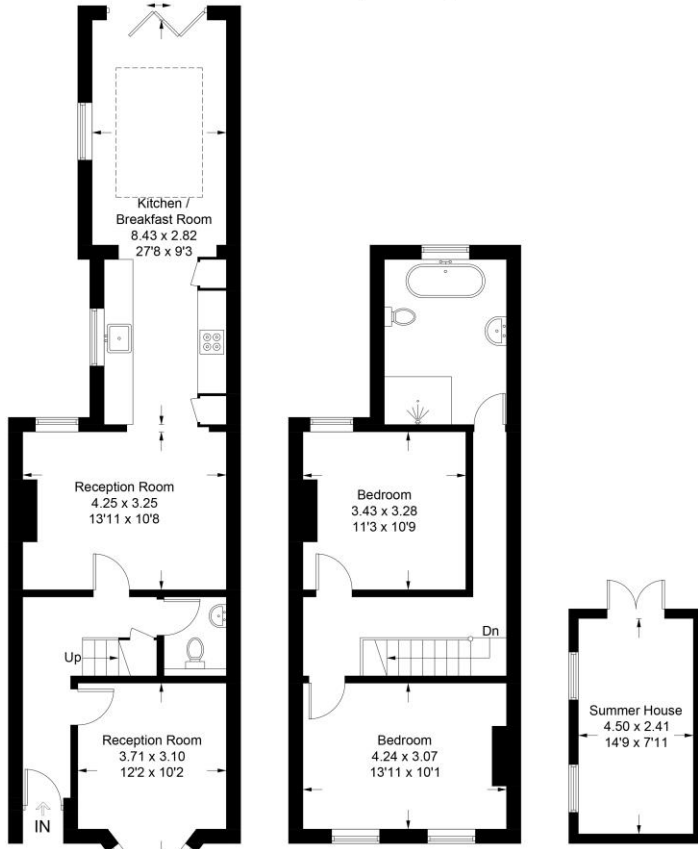


bathroom, an enclosed rear garden with access to Osborne Park via a rear gate and a home office/studio. Positioned on a sought-after tree-lined avenue in South Farnborough, it's within walking distance of local amenities and provides effortless access to the A331/M3 and South Farnborough business park. Viewing is highly recommended. Council Tax Band: C EPC Band: TBC





Approximate Gross Internal Area
 Ground Floor = 58.9 sq m / 634 sq ft
 First Floor = 44.4 sq m / 478 sq ft
 Summer House = 10.8 sq m / 116 sq ft
 Total = 114.1 sq m / 1228 sq ft



Ground Floor

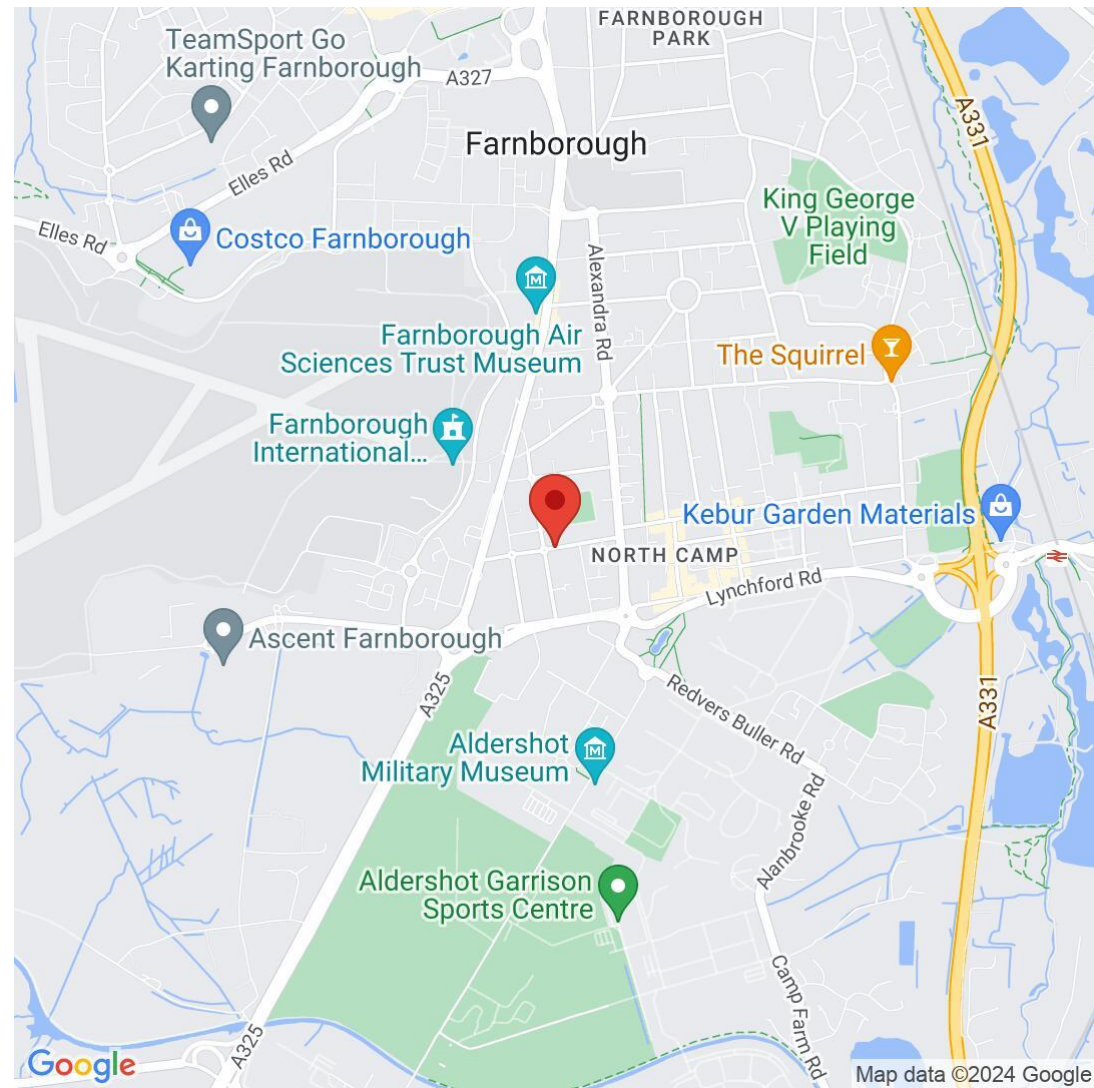
First Floor

(Not Shown In Actual Location / Orientation)



Netley Street

Illustration for identification purposes only, measurements are approximate, not to scale. FloorplansUsketch.com © 2024 (ID1096510)



Osbornes Estate Agents

38a Camp Road, Farnborough, Hampshire, GU14

01252 370707 | info@osbornesestateagents.co.uk | www.osbornesestateagents.co.uk

Important Notice - These particulars have been prepared in good faith and they are not intended to constitute part of an offer or contract. We have not performed a structural survey on this property and the services, appliances and specific fittings have not been tested. All photographs, measurements, floor plans and distances referred to are given as a guide and should not be relied upon.