



Osbornes
Independent estate agents

Alexandra Road | Farnborough

This charming red brick Victorian home is offered to the market with no onward chain.

Detached | Three Bedrooms | Two Reception Rooms | Refitted Kitchen | Landscaped Rear Garden | Off Street Parking

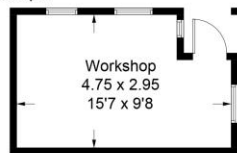
£525,000 | Freehold

This charming red brick Victorian home is offered to the market with no onward chain. The property benefits from three double bedrooms, refitted kitchen, two reception rooms, en-suite to master bedroom, further family bathroom, retaining many original features, landscaped low maintenance rear garden with workshop/home office with power and off street parking. Located in the heart of North Camp village set in an ideal location for the commuter with excellent bus routes, rail, road and general transport networks; Farnborough mainline station will take you into London Waterloo in under 40 minutes and there is access to the M3 bringing Farnham, Fleet, Basingstoke and Camberley within easy reach. Council Tax Band: D EPC Band: TBC

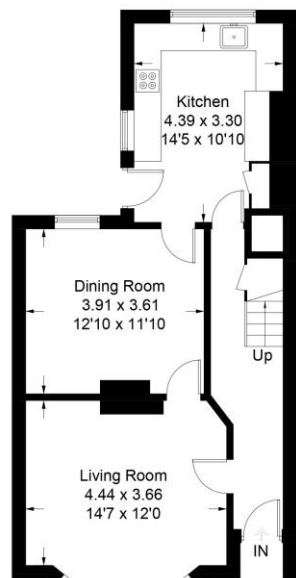




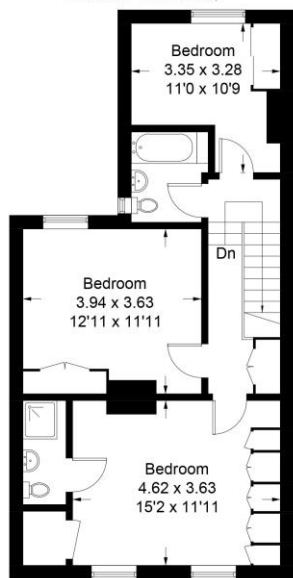
Approximate Gross Internal Area
 Ground Floor = 58.4 sq m / 629 sq ft
 First Floor = 57.5 sq m / 619 sq ft
 Workshop = 12.8 sq m / 138 sq ft
 Total = 128.7 sq m / 1386 sq ft



(Not Shown In Actual
 Location / Orientation)



Ground Floor



First Floor



Alexandra Road

Illustration for identification purposes only, measurements are approximate,
 not to scale. FloorplansUsketch.com © 2022 (ID919128)



Osbornes Estate Agents

38a Camp Road, Farnborough, Hampshire, GU14

01252 370707 | info@osbornesestateagents.co.uk | www.osbornesestateagents.co.uk

Important Notice - These particulars have been prepared in good faith and they are not intended to constitute part of an offer or contract. We have not performed a structural survey on this property and the services, appliances and specific fittings have not been tested. All photographs, measurements, floor plans and distances referred to are given as a guide and should not be relied upon.