



Osbornes  
Independent estate agents

Peabody Road | Farnborough



# **A well-presented one-bedroom bungalow with a generous private garden, ideally located within easy reach of Farnborough town centre and mainline station.**

One Double Bedroom | Kitchen | Shower Room | Gas Central Heating | Private Rear Garden | Available Now

**£1,300 per month**

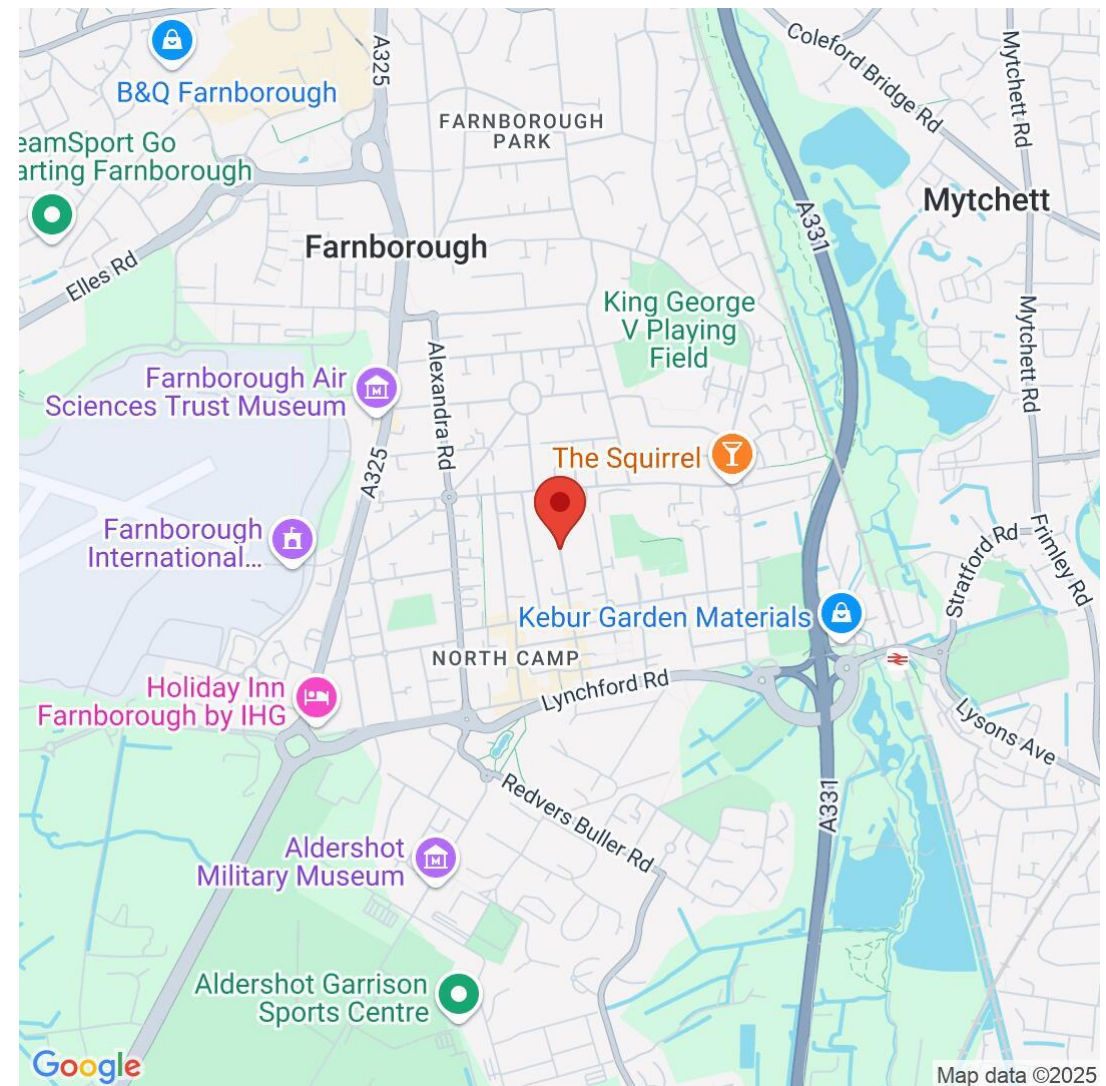
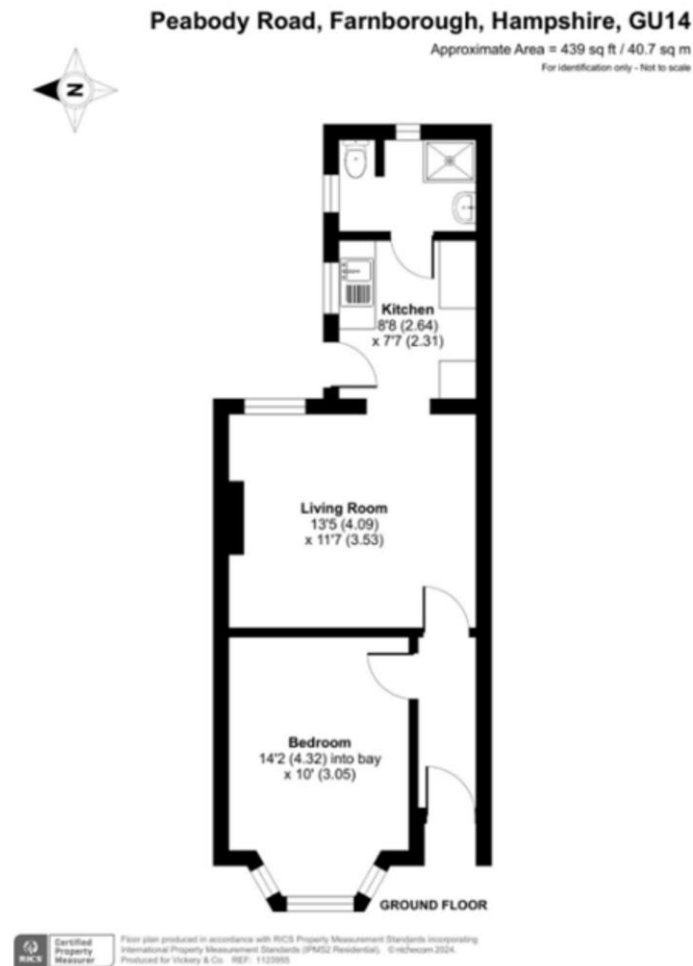
A well-presented one-bedroom bungalow with a generous private garden, ideally located within easy reach of Farnborough town centre and mainline station. The accommodation comprises a bright and spacious double bedroom with bay window, a separate living room, and a modern kitchen fitted with white units, wood-effect worktops, and appliances including a cooker and washing machine. There is also a contemporary shower room with walk-in cubicle, WC, and basin with vanity storage. Externally, the property boasts a large private rear garden, mainly laid to lawn with patio areas, mature planting, two sheds, and gated rear access. Additional features include private front access, gas central heating, and double glazing throughout. Positioned on Peabody Road, the bungalow is conveniently situated for local shops, public transport, and road links to the A331 and M3, making it ideal for a single occupant or professional couple. Offered unfurnished and available now. Early viewing advised. Council Tax Band: B EPC Band: E Deposit Amount £1,615.38











## Osbornes Estate Agents

38a Camp Road, Farnborough, Hampshire, GU14

01252 370707 | [info@osbornesestateagents.co.uk](mailto:info@osbornesestateagents.co.uk) | [www.osbornesestateagents.co.uk](http://www.osbornesestateagents.co.uk)

Important Notice - These particulars have been prepared in good faith and they are not intended to constitute part of an offer or contract. We have not performed a structural survey on this property and the services, appliances and specific fittings have not been tested. All photographs, measurements, floor plans and distances referred to are given as a guide and should not be relied upon.

