

Available with
no deposit



Price

£1,500 PCM

Fees Apply



Available 30/06/25

**Grand Parade
Littlestone TN28**

Wards

Helping you move forwards



Main Features

SUPERB SEA VIEWS
SOUGHT AFTER LOCATION
IMMACULATELY PRESENTED
FOUR BATHROOMS
TWO RECEPTION ROOMS
CLOSE TO LOCAL AMENITIES



Deposit required is £1,730.77
Shepway District - Council Tax Band Tax Band D

Renting a property is a big commitment and we recommend that you visit the local authority website and these websites which offer helpful information and advice about letting

www.gov.uk/government/publications/how-to-rent

www.gov.uk/private-renting

www.wardsofkent.co.uk/renting/tenancy-fees-individuals/

www.gov.uk/green-deal-energy-saving-measures

Call Ashford 01233 639654 ■ wardsofkent.co.uk

IMPORTANT INFORMATION: Please contact our Lettings Team who will confirm the total costs involved in renting this property. For clarification, we wish to inform the prospective tenant that we have prepared these details as a general guide. The agent has not carried out a detailed survey nor tested the services, appliances, or specific fittings (unless otherwise stated), and no warranty can be given as to their condition. All room measurements are taken at floor level. We strongly recommend that all the information which we provide about the property is verified by yourself and your advisers. The contents of this publication are © Wards, 2015. Wards is a trading name of Arun Estates Limited Registered in England No. 2597969

Accommodation

Entrance Hall
Dining Room 3.08 x 2.47
Kitchen 4.50 x 3.15
Shower Room
LANDING
Lounge 4.65 x 4.47
Bathroom
Bedroom 2 3.99 x 2.47
En-suite Shower Bathroom
2nd Floor

Bedroom 1 4.60 x 3.15
En-suite Shower Room
Bedroom 3 3.13 x 2.49
Bathroom
Off Road Parking
Front & Back Garden



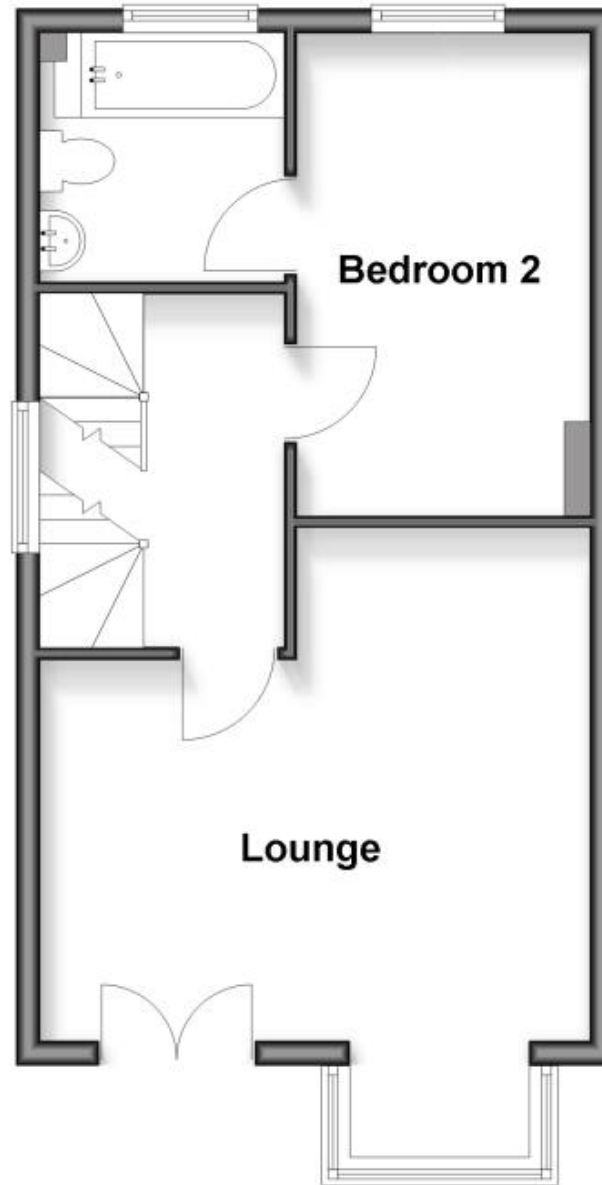
Ground Floor

Approx. 36.2 sq. metres (389.3 sq. feet)



First Floor

Approx. 38.8 sq. metres (417.7 sq. feet)



Second Floor

Approx. 38.8 sq. metres (418.0 sq. feet)

