



**Price**

**£1,800 PCM**

Fees Apply

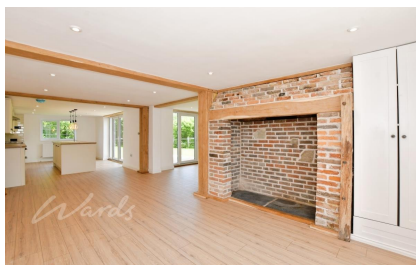


Available 26/05/25

**Biddenden Road St.  
Michaels TN30**

*Wards*  
Helping you move forwards





## Main Features

**STUNNING SEMI DETACHED DOUBLE FRONTED**  
**CONTEMPORARY OPEN PLAN WITH AN ISLAND**  
**COUNTRYSIDE CHARM**  
**MASTER BEDROOM WITH EN-SUITE**  
**PRIVATE REAR GARDEN**  
**GRAVELLED PARKING**



**Deposit required is £2,076.92**  
**Ashford District - Council Tax Band Tax Band C**

Renting a property is a big commitment and we recommend that you visit the local authority website and these websites which offer helpful information and advice about letting

[www.gov.uk/government/publications/how-to-rent](http://www.gov.uk/government/publications/how-to-rent)

[www.gov.uk/private-renting](http://www.gov.uk/private-renting)

[www.wardsofkent.co.uk/renting/tenancy-fees-individuals/](http://www.wardsofkent.co.uk/renting/tenancy-fees-individuals/)

[www.gov.uk/green-deal-energy-saving-measures](http://www.gov.uk/green-deal-energy-saving-measures)

**Call Ashford 01233 639654 ■ [wardsofkent.co.uk](http://wardsofkent.co.uk)**

IMPORTANT INFORMATION: Please contact our Lettings Team who will confirm the total costs involved in renting this property. For clarification, we wish to inform the prospective tenant that we have prepared these details as a general guide. The agent has not carried out a detailed survey nor tested the services, appliances, or specific fittings (unless otherwise stated), and no warranty can be given as to their condition. All room measurements are taken at floor level. We strongly recommend that all the information which we provide about the property is verified by yourself and your advisers. The contents of this publication are © Wards, 2015. Wards is a trading name of Arun Estates Limited Registered in England No. 2597969

## Accommodation

### Entrance Hall

**Open plan lounge kitchen area** 11.44 x 3.28

**Dining area** 3.94 x 2.69

**Utility room** 3 x 1.35

**Bedroom 1** 4.45 x 3.74

**En Suite Shower Room**

**Bedroom 2** 3.3 x 3.28

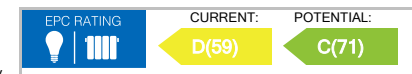
**Family bathroom** 2.85 x 2.24

**Bedroom 3** 3.05 x 2.54

**Bedroom 4** 2.85 x 2.24

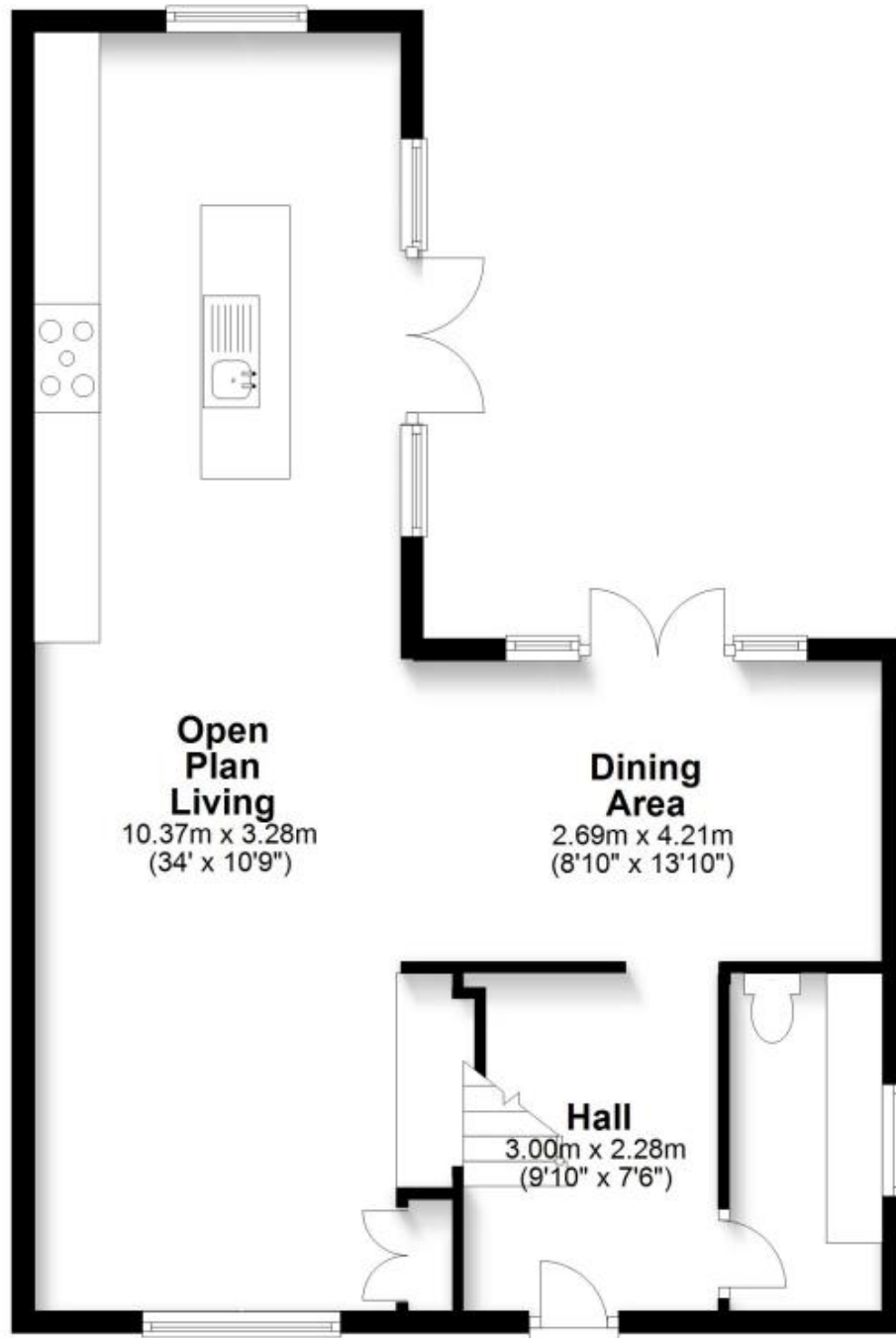
### Front and Rear Gardens

### Driveway



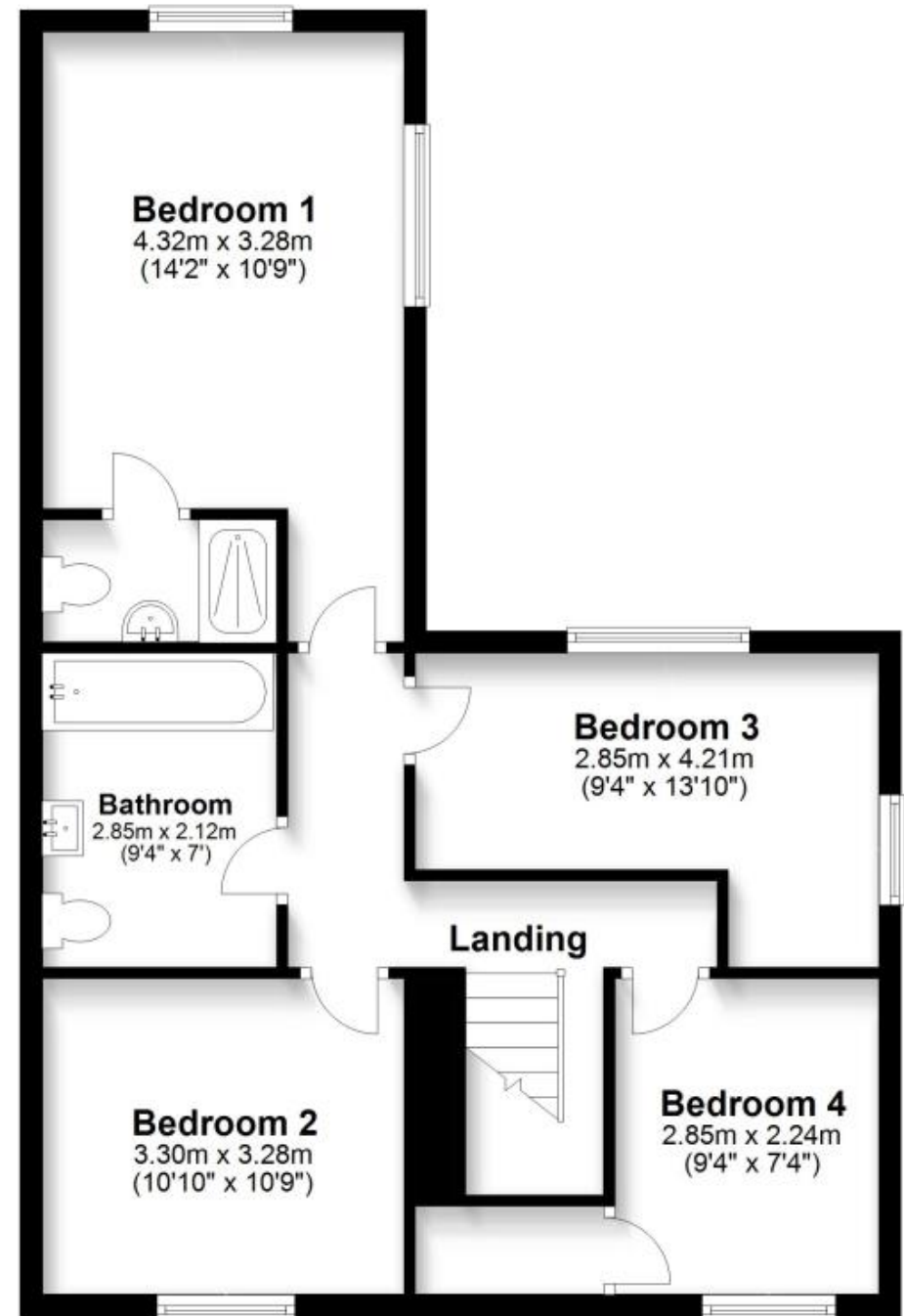
## Ground Floor

Approx. 60.5 sq. metres (650.8 sq. feet)



## First Floor

Approx. 63.5 sq. metres (683.7 sq. feet)



Total area: approx. 124.0 sq. metres (1334.5 sq. feet)