



Price

£1,200 PCM

Fees Apply

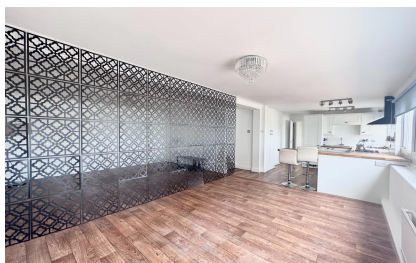


Available 31/05/24

High Street Dymchurch
TN29

Wards

Helping you move forwards



Main Features

- Sea front
- Roof terrace
- Maisonette
- Open plan living
- Master en suite
- Central Dymchurch

Accommodation

- Hallway
- Kitchen area
- Dining area
- Lounge area
- Landing
- Bedroom 1
- En suite shower room
- Bedroom 2
- Roof terrace



Deposit required is £1,384.62
Shepway District - Council Tax Band Tax Band B

Renting a property is a big commitment and we recommend that you visit the local authority website and these websites which offer helpful information and advice about letting

www.gov.uk/government/publications/how-to-rent

www.gov.uk/private-renting

www.wardsofkent.co.uk/renting/tenancy-fees-individuals/

www.gov.uk/green-deal-energy-saving-measures

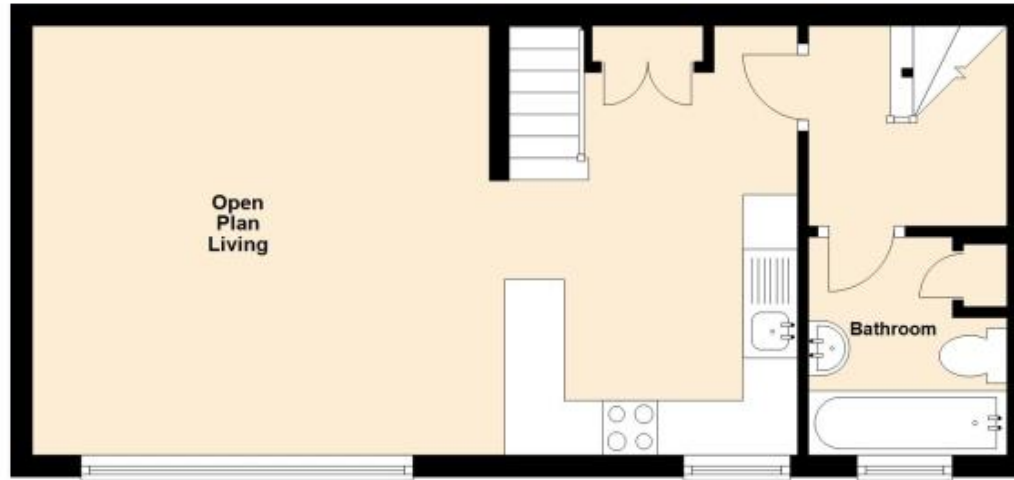
Call Ashford 01233 639654 ■ wardsofkent.co.uk

IMPORTANT INFORMATION: Please contact our Lettings Team who will confirm the total costs involved in renting this property. For clarification, we wish to inform the prospective tenant that we have prepared these details as a general guide. The agent has not carried out a detailed survey nor tested the services, appliances, or specific fittings (unless otherwise stated), and no warranty can be given as to their condition. All room measurements are taken at floor level. We strongly recommend that all the information which we provide about the property is verified by yourself and your advisers. The contents of this publication are © Wards, 2015. Wards is a trading name of Arun Estates Limited Registered in England No. 2597969



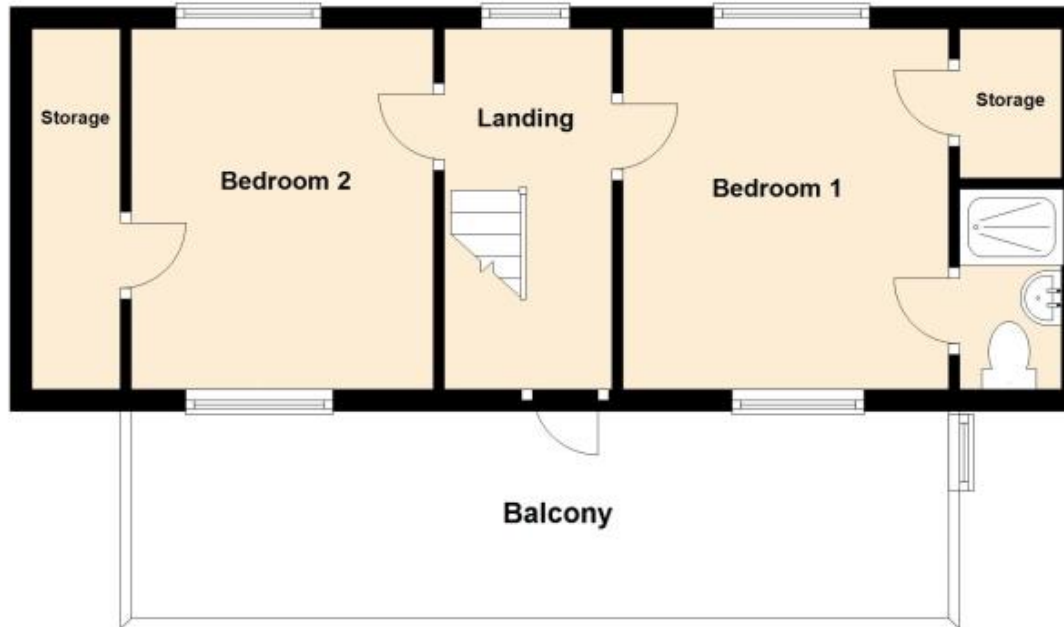
First Floor

Approx. 35.2 sq. metres (378.7 sq. feet)



Second Floor

Approx. 45.5 sq. metres (489.3 sq. feet)



Total area: approx. 80.6 sq. metres (868.0 sq. feet)