

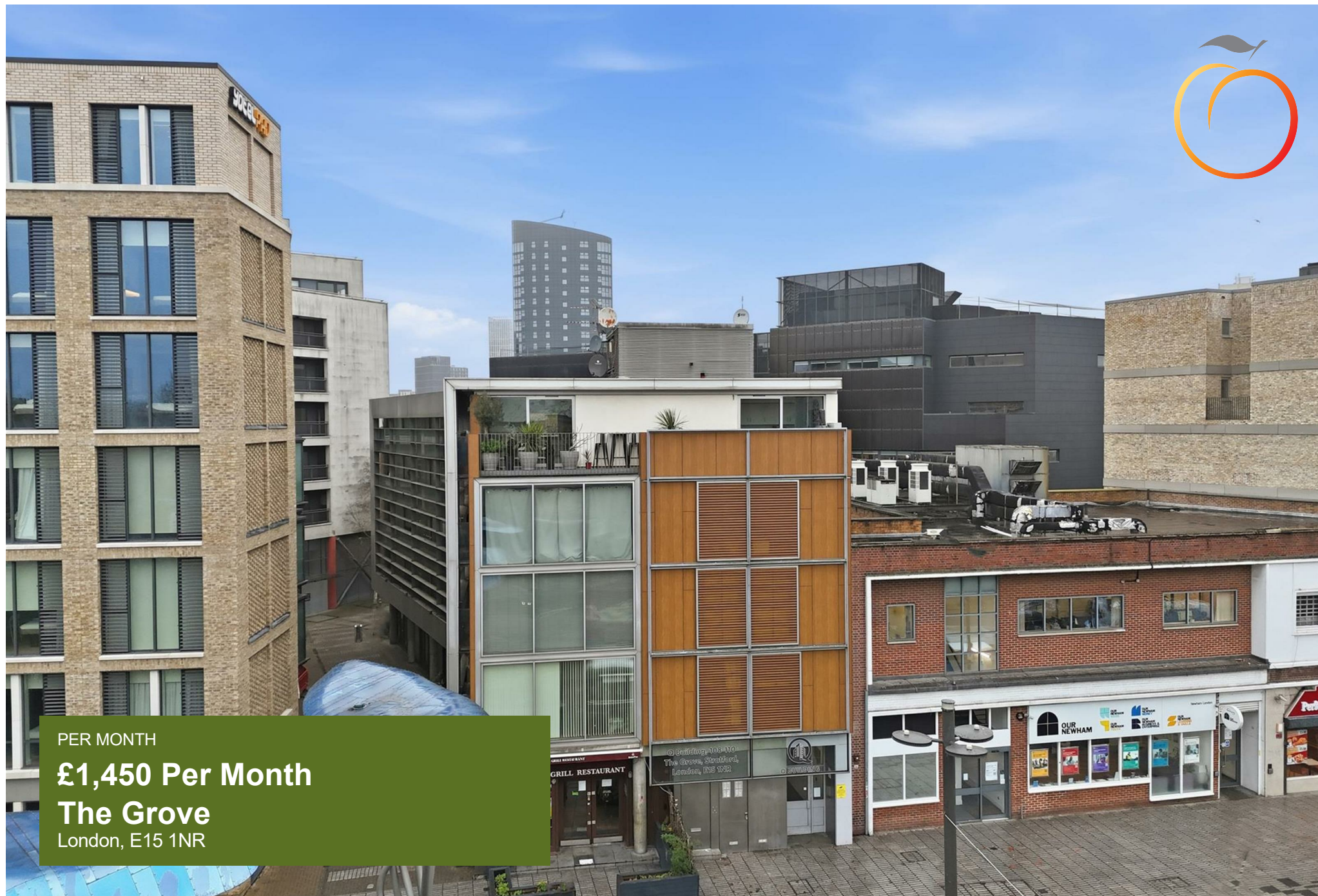


PER MONTH

**£1,450 Per Month**

**The Grove**

London, E15 1NR





1 bedroom apartment located in a private development close to Stratford Station.

The property features a good size reception room, double bedroom, fitted kitchen and family bathroom.

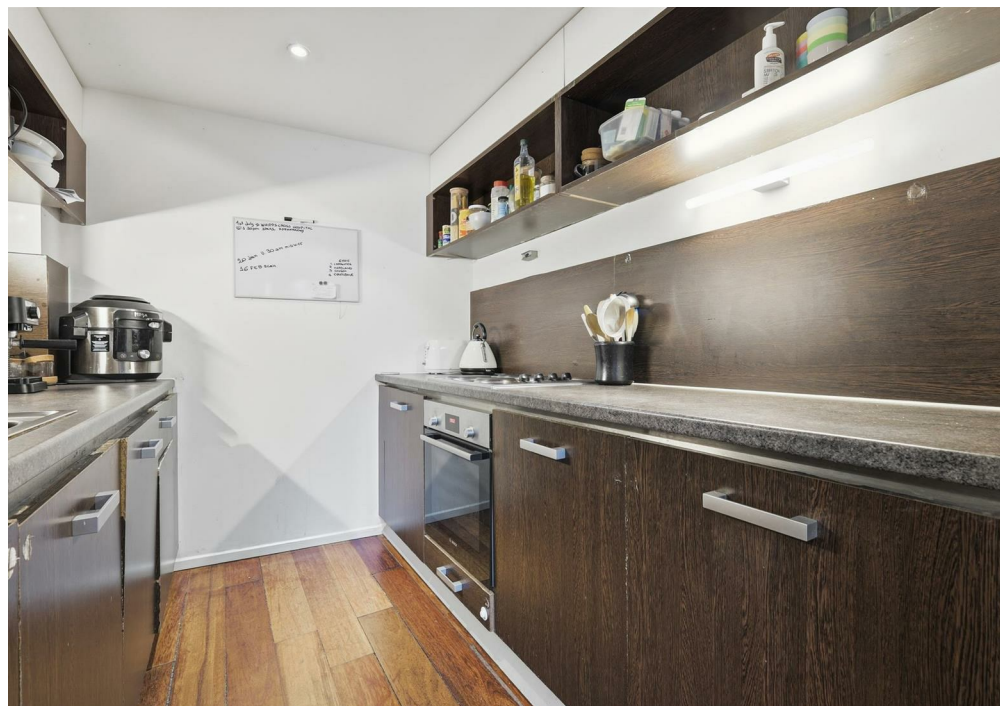
Located close to Stratford Station and Pudding Mill DLR with Westfields shopping center and the Olympic Park close by.

Available middle February

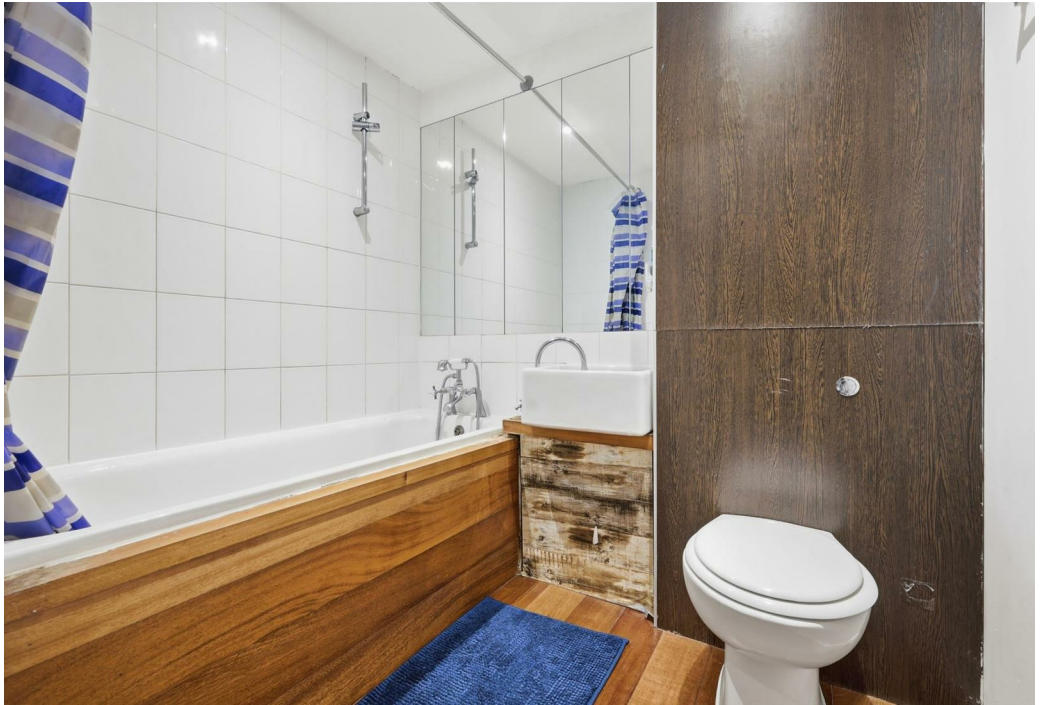
Council Tax: Band B

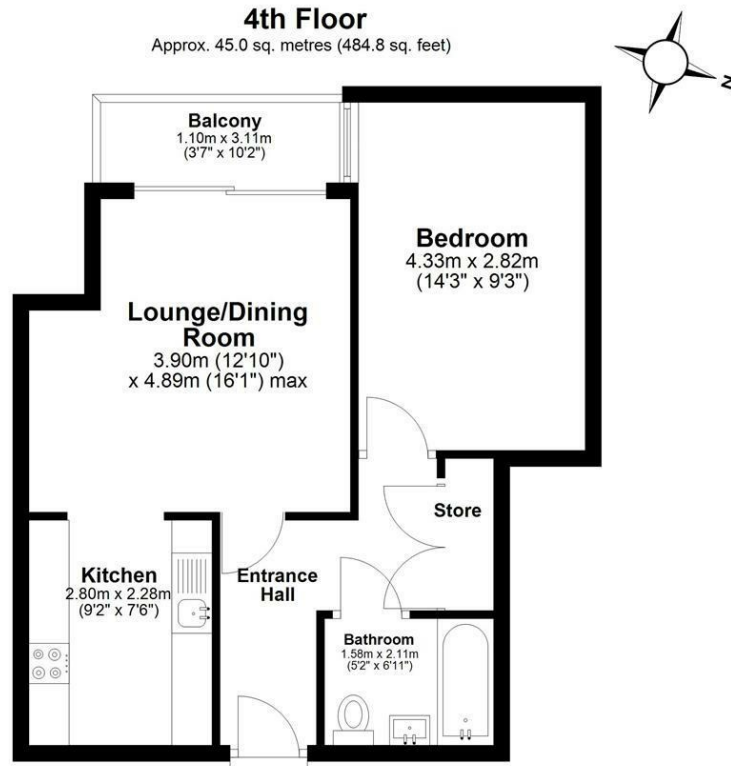
5 weeks: £1,673

12 month contract







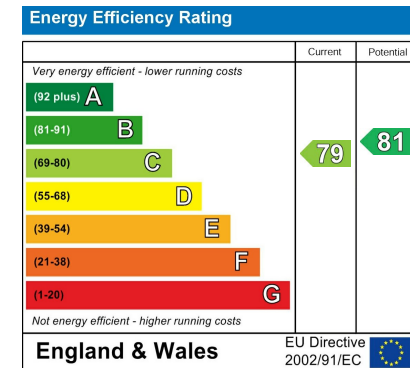


Total area: approx. 45.0 sq. metres (484.8 sq. feet)

All measurements have been taken as a guide to prospective buyers only and are not precise. This plan is for illustrative purposes only and no responsibility for any error, omission or misstatement. The services, systems and appliances shown have not been tested and no guarantee as to their operability or efficiency can be given. Measurements may have been taken from the widest area and may include wardrobe/cupboard space. No guarantee is given to any measurements including total areas. Buyers are advised to take their own measurements.

© @modephoto.uk | www.modephoto.co.uk  
Plan produced using PlanUp.□

**The Grove**



Agents Note: Whilst every care has been taken to prepare these particulars, they are for guidance purposes only. All measurements are approximate and are for general guidance purposes only and whilst every care has been taken to ensure their accuracy, they should not be relied upon and potential buyers/tenants are advised to recheck the measurements

**OFFICE ADDRESS**  
88 Cheshire Street  
London  
E2 6EH

**OFFICE DETAILS**  
0207 739 6969  
info@peachproperties.com  
www.peachproperties.com