



Kinetica Apartments, Tyssen Street, Hackney, E8

£1,900 Per Month

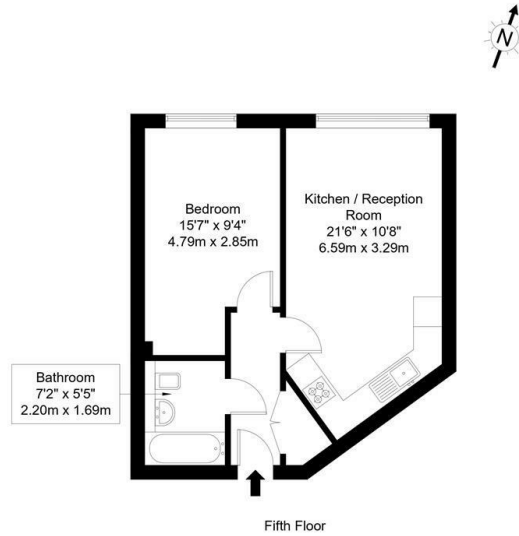
- 1 Bedroom Apartment
- Open Plan Reception
- Wood Flooring
- Available Now
- Private Development
- Modern Kitchen
- Modern Bathroom
- Lift Facilities
- Unfurnished
- Close to Dalston Junction Station

88 Cheshire Street, London, E2 6EH
0207 739 6969

info@peachproperties.com
www.peachproperties.com

Tyssen Street, E8 2FE

Approx Gross Internal Area = 41.38 sq m / 445 sq ft

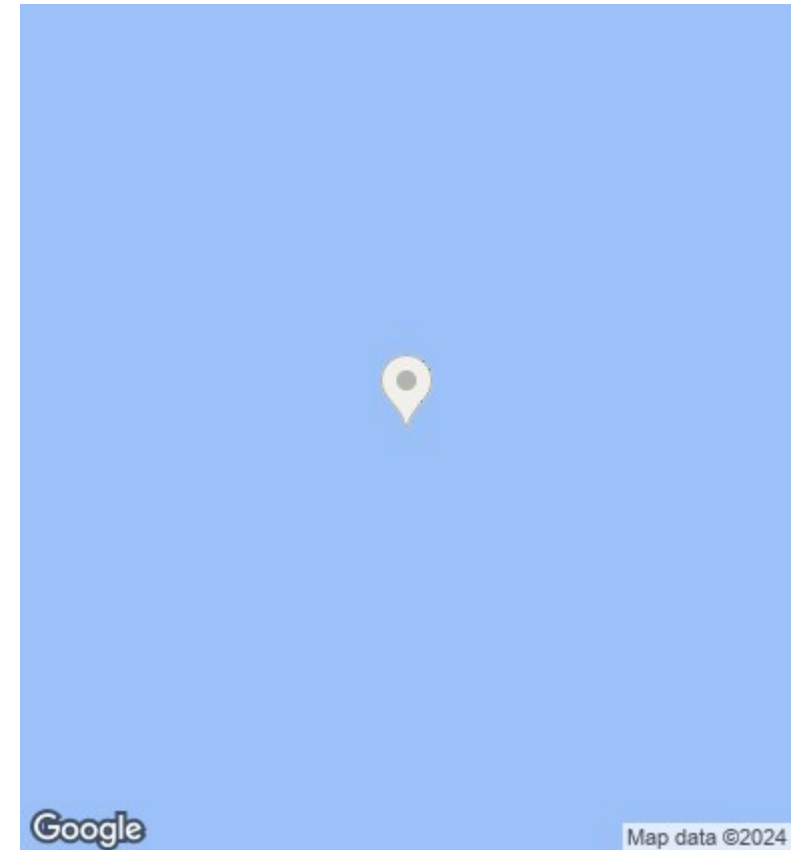


Ref :

Copyright

**B L E U
P L A N**

The Floor plan is not to scale and measurements and areas shown are approximate and therefore should be used for illustrative purposes only. The plan has been prepared in accordance with the RICS code of Measuring Practice and whilst we have confidence in the information produced it must not be relied on. Maximum lengths and widths are represented on the floor plan. If there is any aspect of particular importance, you should carry out or commission your own inspection of the property.
Copyright © BLEUPLAN



Directions

Viewings

Viewings by arrangement only. Call 0207 739 6969 to make an appointment.

Council Tax Band

C

EPC Rating:

Energy Efficiency Rating		Current	Potential
<i>Very energy efficient - lower running costs</i>			
(92 plus) A			
(81-91) B			
(69-80) C			
(55-68) D			
(39-54) E			
(21-38) F			
(1-20) G			
<i>Not energy efficient - higher running costs</i>			
England & Wales		EU Directive 2002/91/EC	