



£340,000
Bonner Street
London, E2 0QP

Set within a small, well maintained purpose built development is this 1 bedroom apartment located in Bethnal Green.

The property features a open-plan reception room with access to a Juliette balcony, modern fitted kitchen, family bathroom with bathtub, large double bedroom with built in wardrobe and ample storage space.

Located in Bethnal Green, this home is just a short walk from Victoria Park and a variety of bars, restaurants and shops including the very popular Broadway Market, Columbia Road Flower Market and Victoria Park Village.

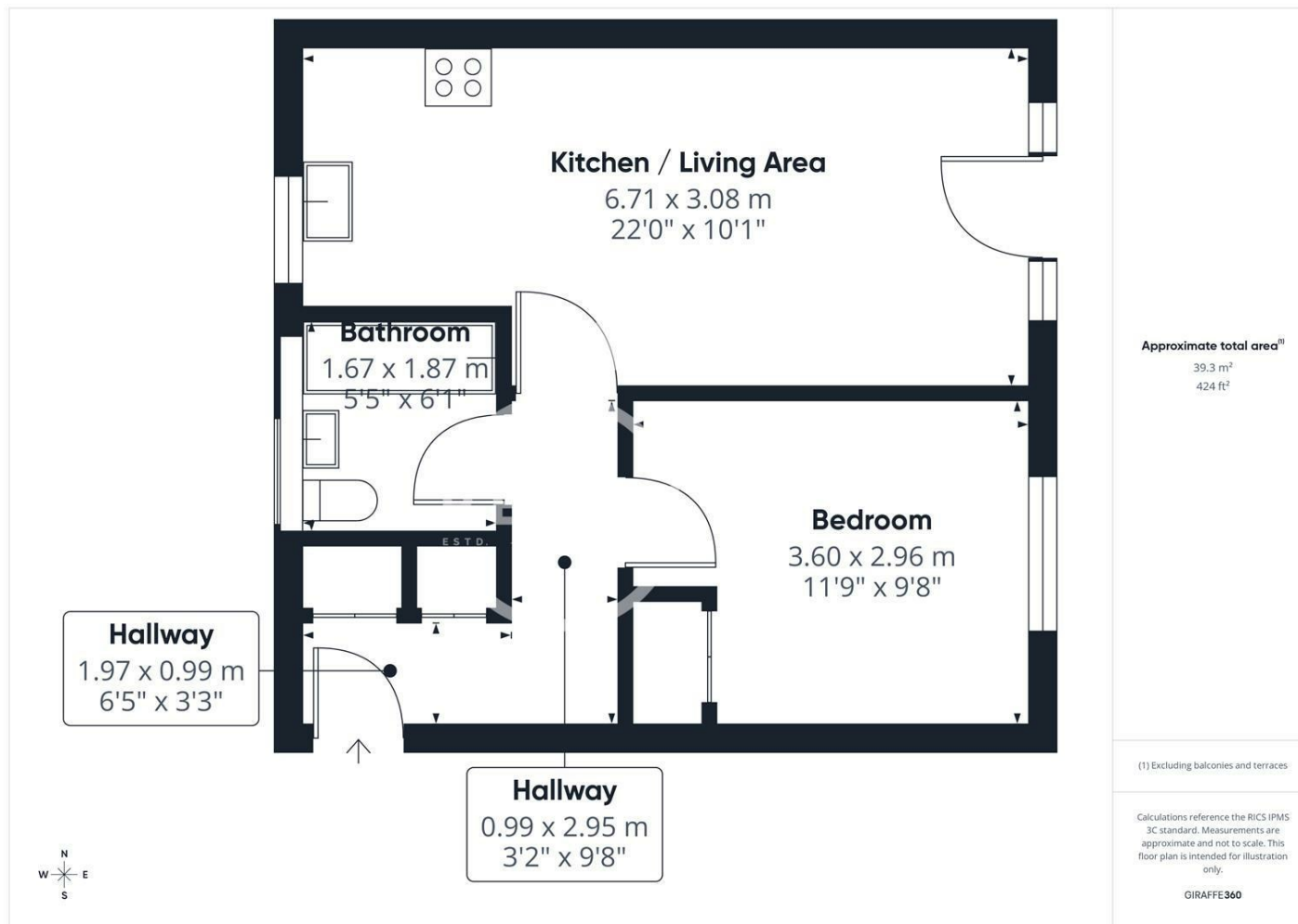
Transport links are very good with both Bethnal Green and Cambridge Heath stations being very close by, as well as many bus routes.

Offered on a chain free basis.

Leasehold: 91 years remaining
Service Charge: £1496 per annum
Ground Rent: £20 per annum
Council Tax: Band C







Energy Efficiency Rating		
	Current	Potential
Very energy efficient - lower running costs		
(92 plus) A		
(81-91) B		
(69-80) C	76	79
(55-68) D		
(39-54) E		
(21-38) F		
(1-20) G		
Not energy efficient - higher running costs		
England & Wales	EU Directive 2002/91/EC	

Agents Note: Whilst every care has been taken to prepare these particulars, they are for guidance purposes only. All measurements are approximate and are for general guidance purposes only and whilst every care has been taken to ensure their accuracy, they should not be relied upon and potential buyers/tenants are advised to recheck the measurements

OFFICE ADDRESS
88 Cheshire Street
London
E2 6EH

OFFICE DETAILS
0207 739 6969
info@peachproperties.com
www.peachproperties.com