



PCM

**£1,900 PCM**

**Columbia Road**

, E2 7PP

## INCLUSIVE OF HEATING AND HOT WATER

Located on Columbia Road in the heart of the vibrant Shoreditch, is this large one bedroom apartment with private balcony.

The property features an excellent size reception room with wooden floors and access to a private balcony, recently fitted separate kitchen, tiled and modern shower suite and a large double bedroom with space for furnishings.

Set in one of the best locations in Shoreditch, with plenty of coffee shops, restaurants and bars close by. Including some famous market places, Brick Lane, Columbia road and Broadway markets.

Transport links include, Shoreditch High-Street, Old Street and Liverpool Street tube stations as well as major bus routes into the City.

Heating & hot-water are included in the rent.

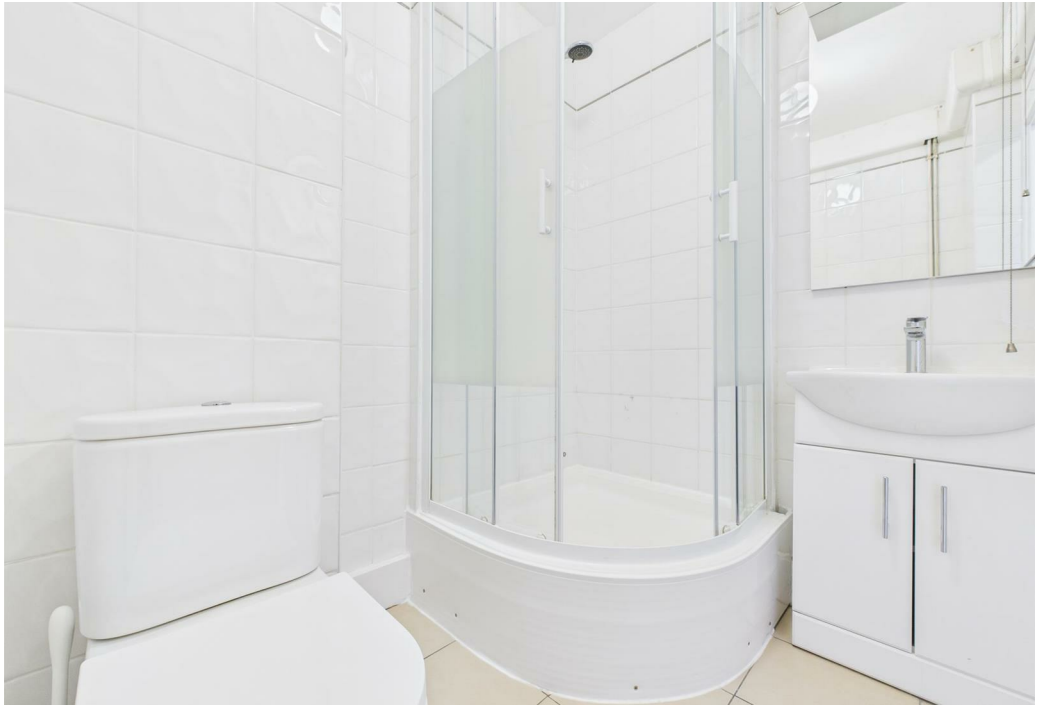
5 weeks deposit: £2192

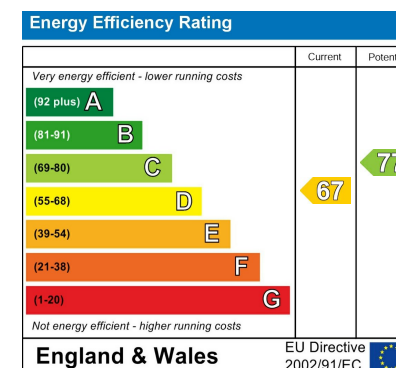
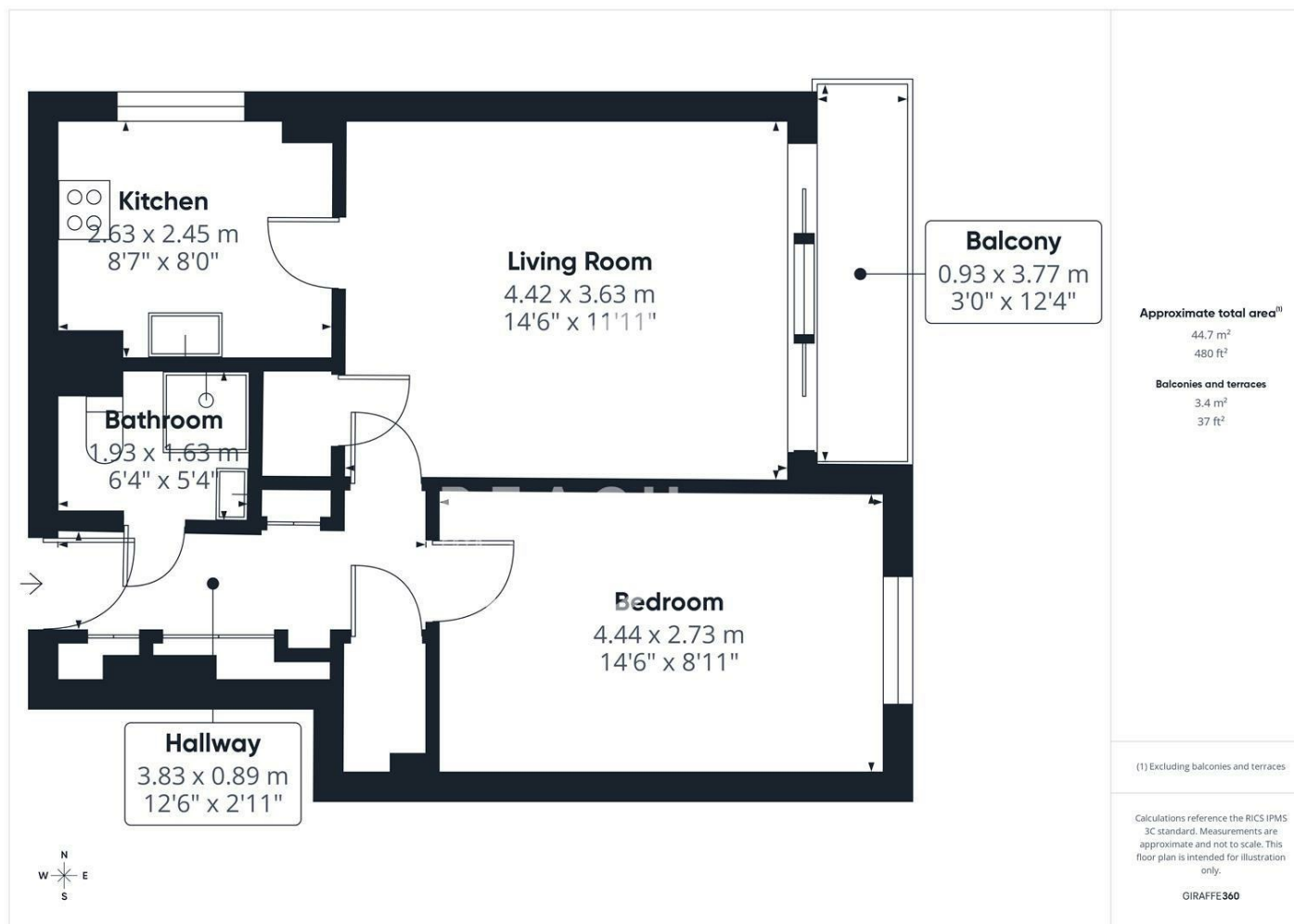
12 month agreement: breakclause subject to offer

Council tax: Band B









Agents Note: Whilst every care has been taken to prepare these particulars, they are for guidance purposes only. All measurements are approximate and are for general guidance purposes only and whilst every care has been taken to ensure their accuracy, they should not be relied upon and potential buyers/tenants are advised to recheck the measurements

**OFFICE ADDRESS**  
88 Cheshire Street  
London  
E2 6EH

**OFFICE DETAILS**  
0207 739 6969  
info@peachproperties.com  
www.peachproperties.com