



PCM

**£1,900 PCM**

**Wilmot Street**

London, E2 0BU



1 bedroom apartment set in the heart of Bethnal Green.

The property is set on the 2nd ground floor a period conversion and features a bright reception room with views over Weavers Fields. The fitted kitchen is set off the reception room.

There is a fitted bathroom with bathtub and shower and a large double bedroom with built in wardrobes and bay window.

Located just a few moments from Bethnal Green Underground Station and Bethnal Green Overground with Brick Lane and Shoreditch just a short walk away.

Available December

Council Tax: Band B

Deposit: £2,192

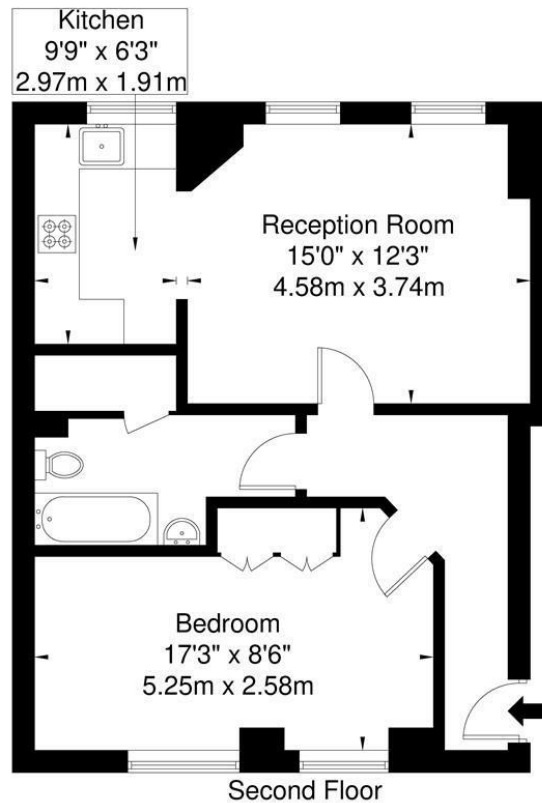
12 month contract: break clause subject to offer





## Wilmot Street E2 0BU

Approx. Gross Internal Area = 54.5 sq m / 586 sq ft



Ref

Copyright

**BLEU  
PLAN**

The Floor plan is not to scale and measurements and areas shown are approximate and therefore should be used for illustrative purposes only. The plan has been prepared in accordance with the RICS code of Measuring Practice and whilst we have confidence in the information produced it must not be relied on. If there is any aspect of particular importance, you should carry out or commission your own inspection of the property.

Copyright © BLEUPLAN

Energy Efficiency Rating		
	Current	Potential
Very energy efficient - lower running costs		
(92 plus) <b>A</b>		<b>83</b>
(81-91) <b>B</b>		
(69-80) <b>C</b>		
(55-68) <b>D</b>	<b>57</b>	
(39-54) <b>E</b>		
(21-38) <b>F</b>		
(1-20) <b>G</b>		
Not energy efficient - higher running costs		
<b>England &amp; Wales</b>	EU Directive 2002/91/EC	

Agents Note: Whilst every care has been taken to prepare these particulars, they are for guidance purposes only. All measurements are approximate and are for general guidance purposes only and whilst every care has been taken to ensure their accuracy, they should not be relied upon and potential buyers/tenants are advised to recheck the measurements

### OFFICE ADDRESS

88 Cheshire Street  
London  
E2 6EH

### OFFICE DETAILS

0207 739 6969  
info@peachproperties.com  
www.peachproperties.com