

£325,000

Killick Way

London, E1 3FE

CASH BUYERS ONLY

Offered for rent is this stylish 1 bedroom apartment set on the 5th floor of a modern private development in Stepney Green.

The property is in excellent condition throughout and features a bright open plan reception room with a modern integrated kitchen which integrated appliances.

There is a large private balcony which has great views over the communal grounds.

There is a large double bedroom with built in wardrobes and a contemporary fitted bathroom with bath and shower attachment.

The development is very well maintained with a video entry service, lift facilities and communal gardens.

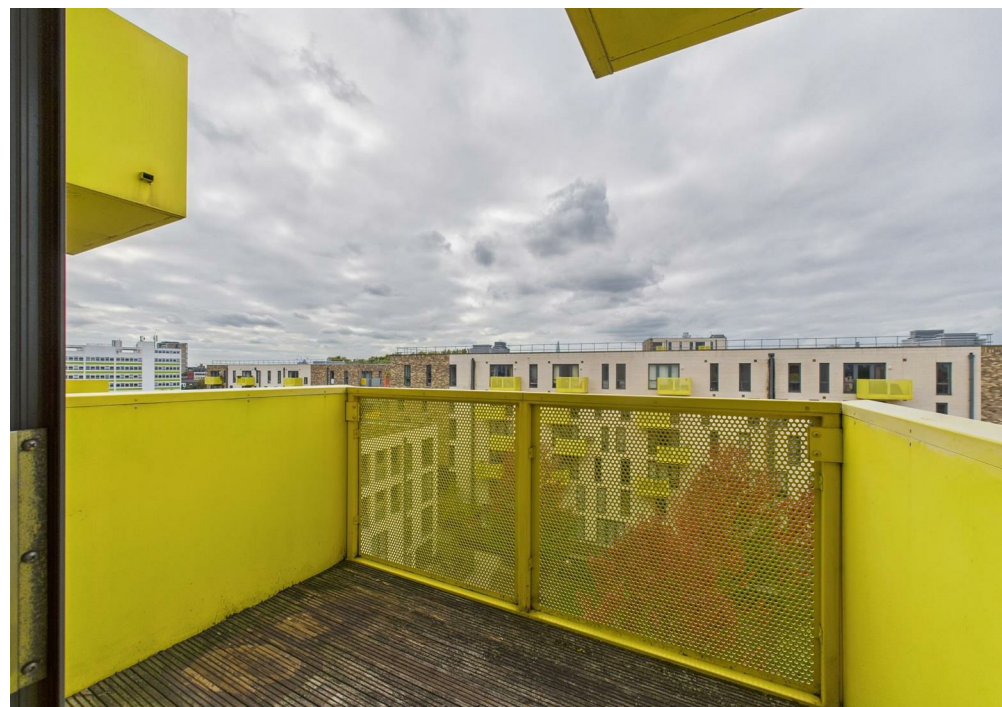
The property is located just a few moments from Stepney Green Station with Mile End and Whitechapel both also within walking distance.

Leasehold: years 238 years remaining

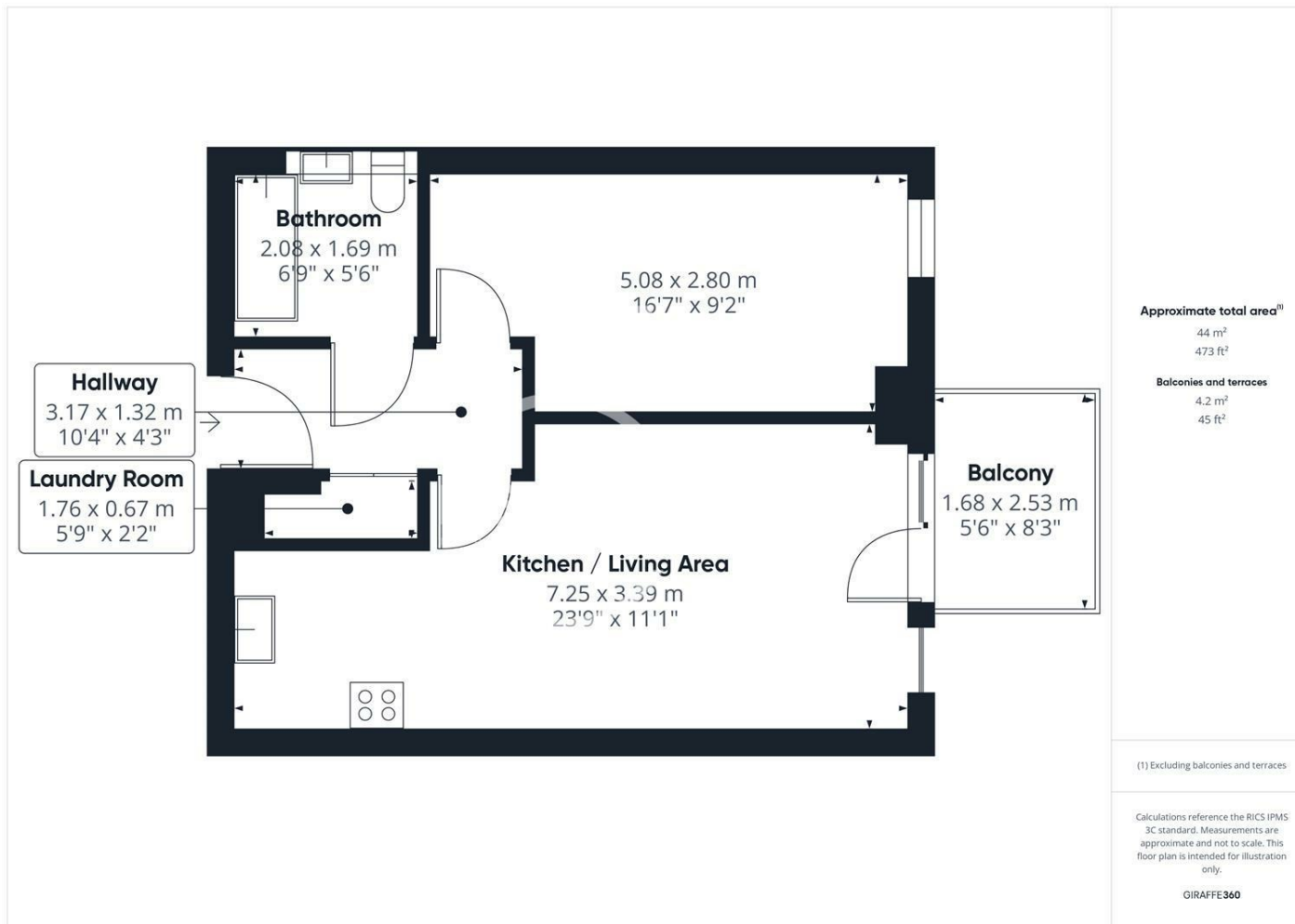
Service Charge: £2959 per annum

Ground Rent: £238 per annum

Council Tax: Band C







Energy Efficiency Rating		
	Current	Potential
<i>Very energy efficient - lower running costs</i>		
(92 plus) A		
(81-91) B	82	82
(69-80) C		
(55-68) D		
(39-54) E		
(21-38) F		
(1-20) G		
<i>Not energy efficient - higher running costs</i>		
England & Wales	EU Directive 2002/91/EC	

Agents Note: Whilst every care has been taken to prepare these particulars, they are for guidance purposes only. All measurements are approximate and are for general guidance purposes only and whilst every care has been taken to ensure their accuracy, they should not be relied upon and potential buyers/tenants are advised to recheck the measurements

OFFICE ADDRESS
88 Cheshire Street
London
E2 6EH

OFFICE DETAILS
0207 739 6969
info@peachproperties.com
www.peachproperties.com