



PCM

£2,300 PCM

Ben Jonson Road

London, E1 4GJ

Overlooking Regents Canal is this ultra-modern two bedroom, two bathroom apartment. Walking distance to Mile End and Stepney Green tube station's.

The property features a dual aspect open plan living area to stylish kitchen with integrated appliances. With solid wooden flooring, large windows allowing an abundance of natural light, and access to a private balcony with superb views of Regents Canal.

The master bedroom has fitted wardrobes with an en-suite shower, second bedroom is a good sized double room with space for additional furniture.

Family bathroom suite with bathtub and shower attachment, and storage cupboards accessed from the hallway.

With lift facilities, and intercom system making the development secure and accessible.

Mile End tube, Stepney Green tube stations, Limehouse DLR and popular bus stops are within walking distance. Making the property well connected to both Canary Wharf and the City.

Tenants will pay for gas use via bills issues by the block managers.

Available from the middle/end November

5 weeks deposit: ££2653

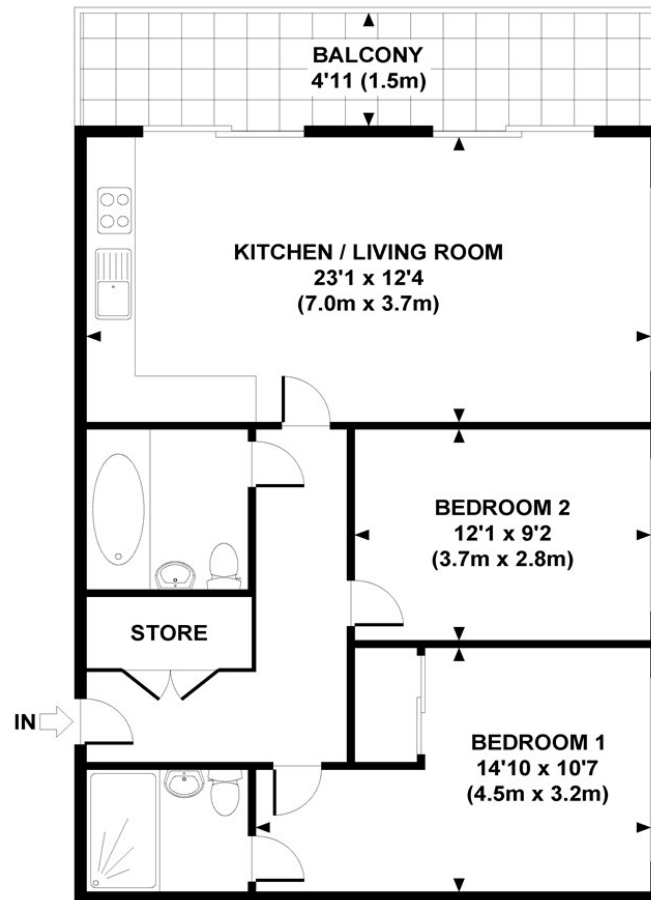
council tax: band D

12 month contract: breakclause subject to offer





Bethnal Green Road



**GROSS INTERNAL
FLOOR AREA 745 SQ FT**

APPROX. GROSS INTERNAL FLOOR AREA 745 SQ FT / 69.3 SQ M

Energy Efficiency Rating		
	Current	Potential
Very energy efficient - lower running costs		
(92 plus) A		
(81-91) B	85	85
(69-80) C		
(55-68) D		
(39-54) E		
(21-38) F		
(1-20) G		
Not energy efficient - higher running costs		
England & Wales	EU Directive 2002/91/EC	

Agents Note: Whilst every care has been taken to prepare these particulars, they are for guidance purposes only. All measurements are approximate and are for general guidance purposes only and whilst every care has been taken to ensure their accuracy, they should not be relied upon and potential buyers/tenants are advised to recheck the measurements

OFFICE ADDRESS
88 Cheshire Street
London
E2 6EH

OFFICE DETAILS
0207 739 6969
info@peachproperties.com
www.peachproperties.com