



£575,000

Bruce Road

London, E3 3EU

Guide Price £575,000- £600,000

This spacious property offers a luxury fully fitted separate kitchen with ample space to accommodate a dining table and chairs, complemented by contemporary décor and stylish flooring throughout.

We are delighted to offer this modern four-bedroom townhouse set over three floors, ideally located close to Bow Road Underground Station and Bow Church DLR.

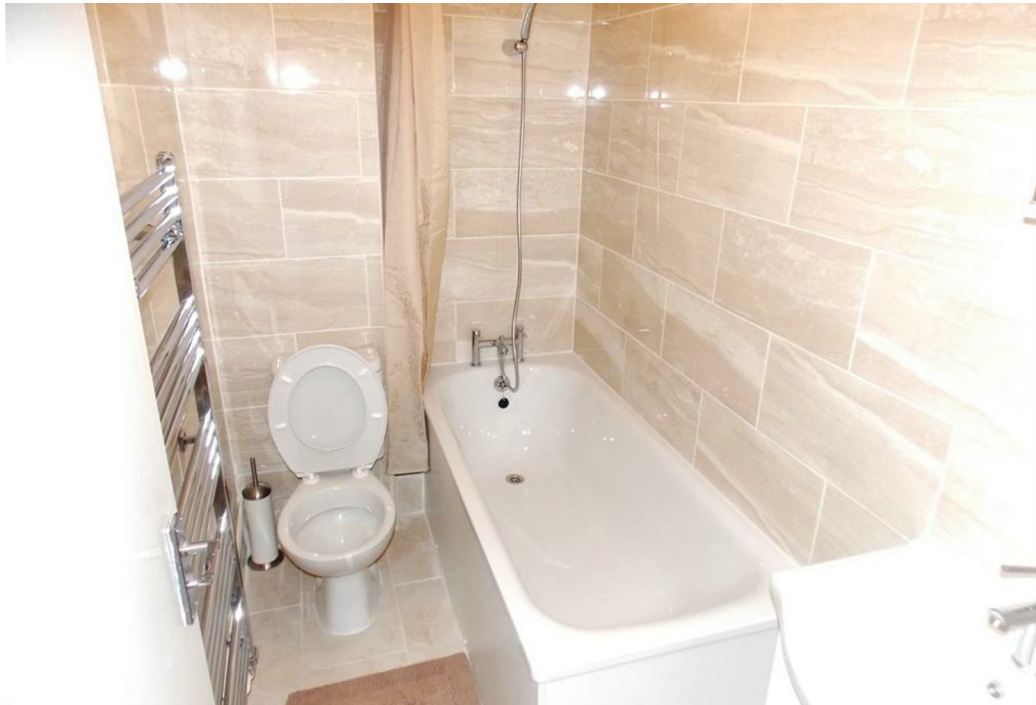
The home also features a low-maintenance paved rear garden, perfect for entertaining guests. All four bedrooms are well-proportioned doubles, providing comfortable living for families or sharers. The property includes a modern bathroom, a separate shower room, and an additional WC, ensuring convenience across all floors.

Located in a vibrant and well-connected area, the property benefits from excellent transport links, including 24-hour bus services with direct routes to Central London and the West End via Shoreditch and Holborn, as well as easy access to Canary Wharf. A variety of shopping facilities are right on your doorstep, along with a great selection of local pubs and restaurants, offering plenty of options for dining and socializing.

Offered chain free.

Tenure: Freehold
Council tax D







Energy Efficiency Rating		
	Current	Potential
Very energy efficient - lower running costs		
(92 plus) A		85
(81-91) B		
(69-80) C	74	
(55-68) D		
(39-54) E		
(21-38) F		
(1-20) G		
Not energy efficient - higher running costs		
England & Wales	EU Directive 2002/91/EC	

Agents Note: Whilst every care has been taken to prepare these particulars, they are for guidance purposes only. All measurements are approximate and are for general guidance purposes only and whilst every care has been taken to ensure their accuracy, they should not be relied upon and potential buyers/tenants are advised to recheck the measurements

OFFICE ADDRESS
88 Cheshire Street
London
E2 6EH

OFFICE DETAILS
0207 739 6969
info@peachproperties.com
www.peachproperties.com