

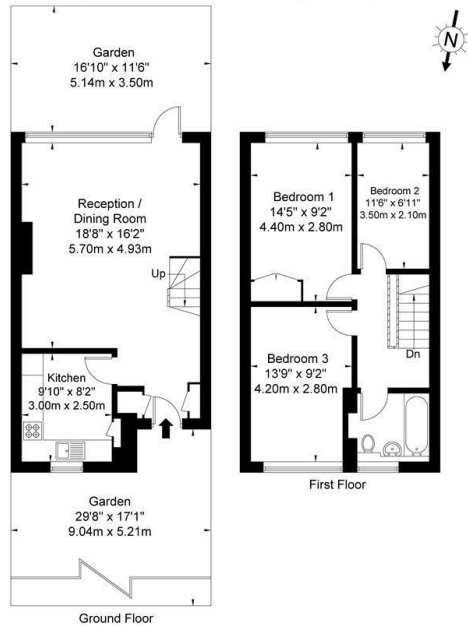
## Brancaster House Moody Street, Stepney Green, E1

£2,800 PCM

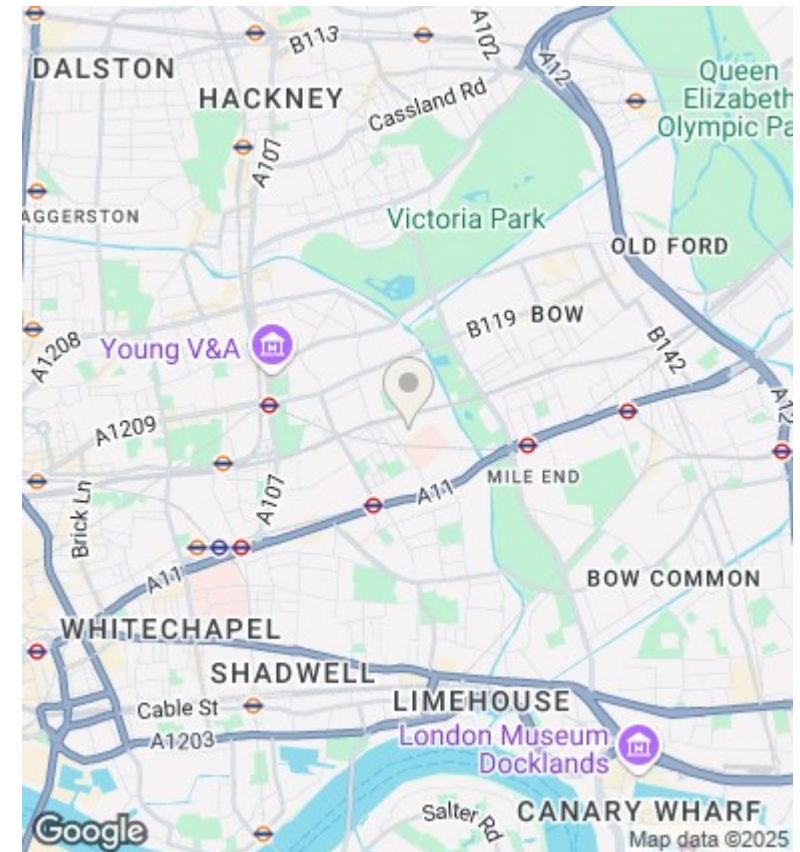
- Large 3 Bedroom Apartment
- Open Plan Reception Room
- Furnished
- Modern Bathroom
- Split Level
- Close To Stepney Green Station
- Double Glazing
- Front And Rear Garden
- Close To Queen Mary University
- Wood Flooring

## Brancaster House Moody Street E1 4DD

Approx Gross Internal Area = 84.9 sq m / 913 sq ft



The Floor plan is not to scale and measurements and areas shown are approximate and therefore should be used for illustrative purposes only. The plan has been prepared in accordance with the RICS code of Measuring Practice and whilst we have confidence in the information produced it must not be relied on. If there is any aspect of particular importance, you should carry out or commission your own inspection of the property.  
Copyright © BLEUPLAN



## Directions

## Viewings

Viewings by arrangement only. Call 0207 739 6969 to make an appointment.

## Council Tax Band

C

## EPC Rating:

C

Energy Efficiency Rating		
	Current	Potential
Very energy efficient - lower running costs		
(92 plus) <b>A</b>		
(81-91) <b>B</b>		
(69-80) <b>C</b>	73	83
(55-68) <b>D</b>		
(39-54) <b>E</b>		
(21-38) <b>F</b>		
(1-20) <b>G</b>		
Not energy efficient - higher running costs		
<b>England &amp; Wales</b>	EU Directive 2002/91/EC	