



PER MONTH

£1,975 Per Month

Maryland Street

London, E15 1BY

Spanning an impressive 838 square feet, the property features a well-appointed reception room with plenty of natural light and access to 2 large balconies,. There is access to a modern fitted kitchen.

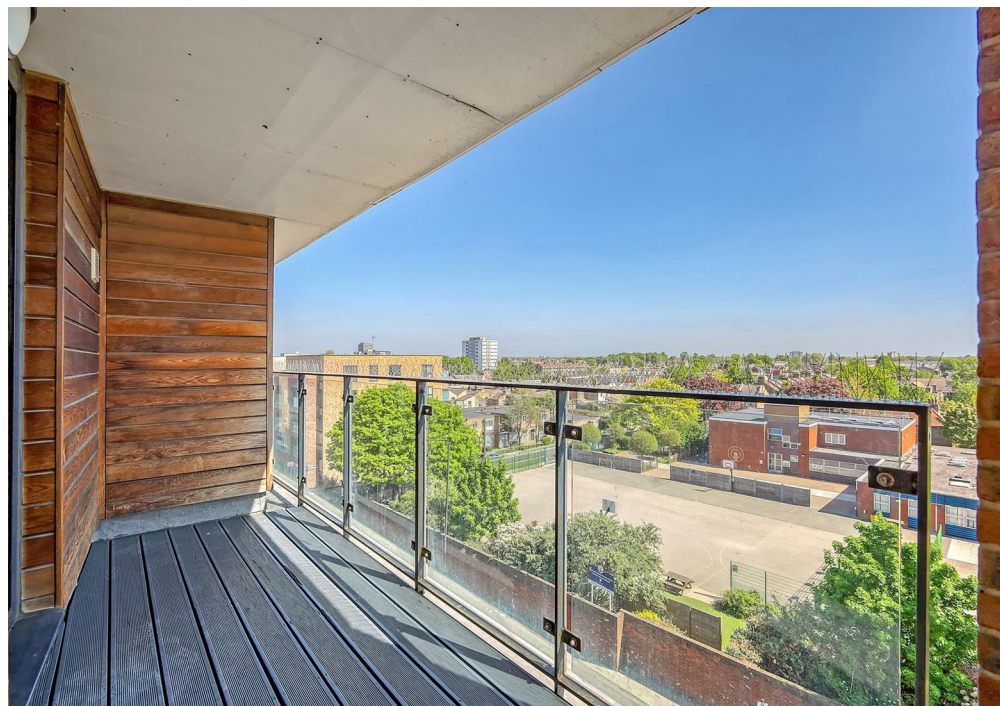
There are 2 large double bedrooms, contemporary bathroom and storage.

Located close to Maryland Station with easy access to Stratford Station giving east access to Canary Wharf and the City. Westfields Shopping Centre is also within a short walk.

5 weeks deposit: £2279.84

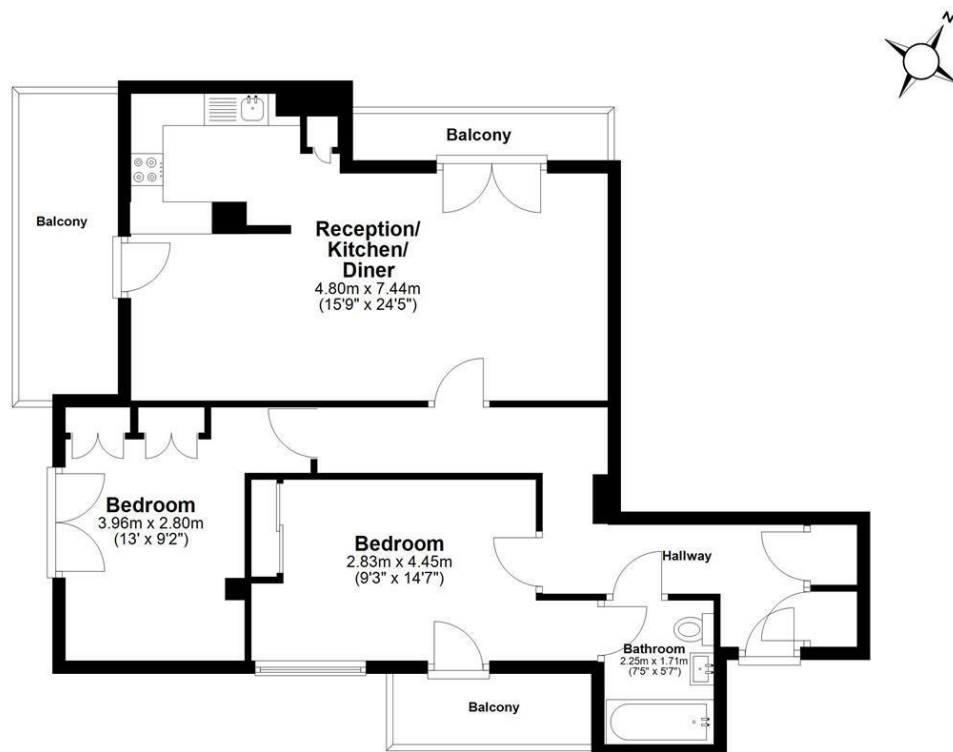
Council tax: Band C

12 month contract: breakclause subject to offer





Fourth Floor Approx. 77.9 sq. metres (838.8 sq. feet)



Total area: approx. 77.9 sq. metres (838.8 sq. feet)

This floor plan has been created by a third party and should be used as a general outline for guidance only. Any areas, measurements or distances quoted are approximate and any intending purchaser or lessee should satisfy themselves by inspection, searches, enquiries and/or full survey as to the correctness of each statement. We accept no responsibility or liability for any loss whatsoever that may arise as a result of this plan and the information contained within.

© @modephotok | www.modephoto.co.uk
Plan produced using PlanUp.

Maryland Street

Energy Efficiency Rating		
	Current	Potential
Very energy efficient - lower running costs		
(92 plus) A		
(81-91) B	80	80
(69-80) C		
(55-68) D		
(39-54) E		
(21-38) F		
(1-20) G		
Not energy efficient - higher running costs		
England & Wales	EU Directive 2002/91/EC	

Agents Note: Whilst every care has been taken to prepare these particulars, they are for guidance purposes only. All measurements are approximate and are for general guidance purposes only and whilst every care has been taken to ensure their accuracy, they should not be relied upon and potential buyers/tenants are advised to recheck the measurements

OFFICE ADDRESS
88 Cheshire Street
London
E2 6EH

OFFICE DETAILS
0207 739 6969
info@peachproperties.com
www.peachproperties.com