



**£950,000**  
**Granby Street**  
London, E2 6DR



Located just a few seconds from Brick Lane is this rare opportunity to purchase an extended freehold semi-detached house with off-street parking.

Spread over three levels, the property benefits from a modern kitchen, downstairs reception/dining room which has access to downstairs shower room, and access to a good-sized rear garden.

The first floor has a large, bright and spacious reception room (which could also be used as a fourth bedroom) and a double-bedroom.

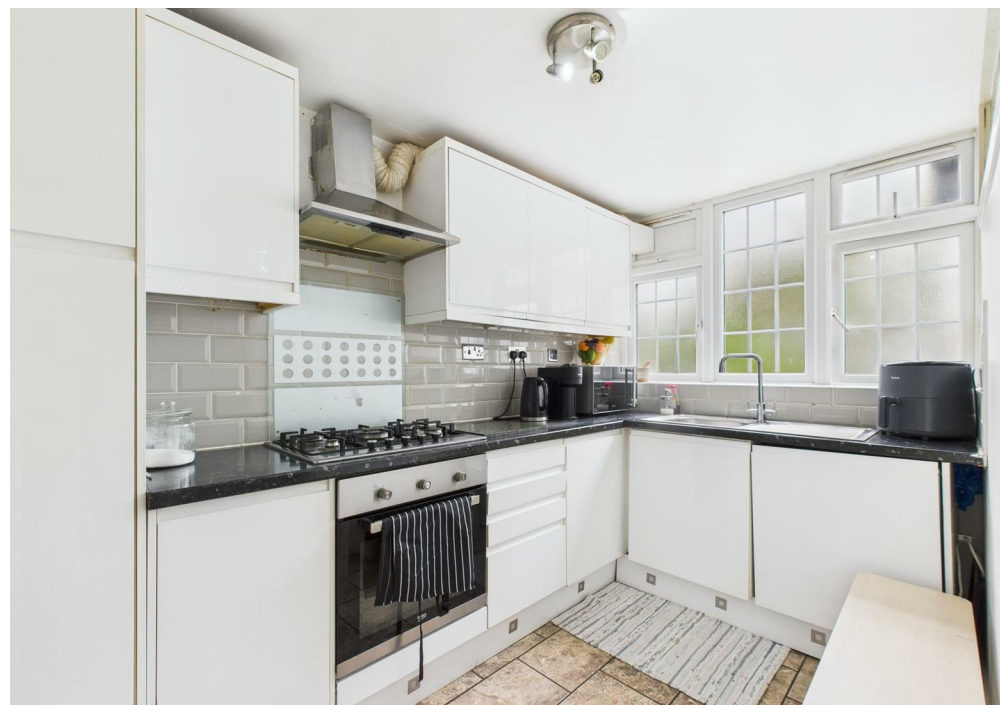
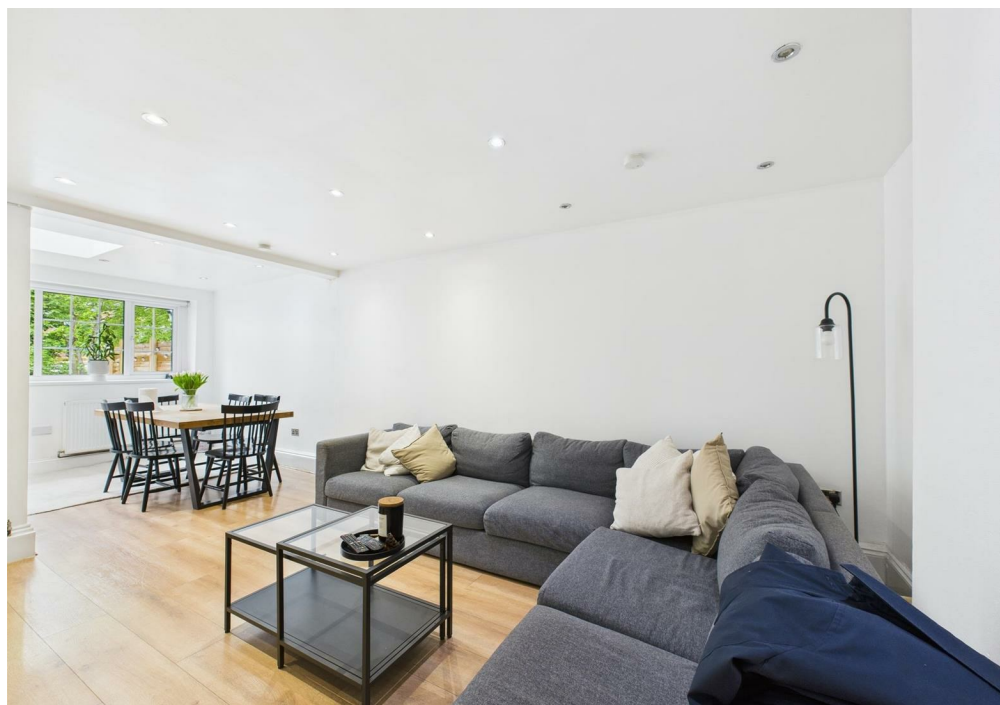
The top floor has a further 2 double-bedrooms, and a second family bathroom.

Granby Street is located moments from Brick Lane, one of the East End's most famous streets, with a colourful history that records numerous different communities passing through over the centuries. The restaurants, cafes and shops both on the road and in the wider locality are popular destinations for locals and visitors alike, and considered heaven for bargain hunters, foodies and fashionistas. Columbia Road Flower Market, Spitalfields and Whitechapel are all close by as well as some fantastic green escapes further afield - Haggerston Park, London Fields, and Victoria Park - voted London's favourite outdoor space.

The area has excellent transport links and is a short walk from Liverpool Street mainline station, Aldgate Underground and Shoreditch High Street Overground stations, as well as being served by a large number of bus routes.

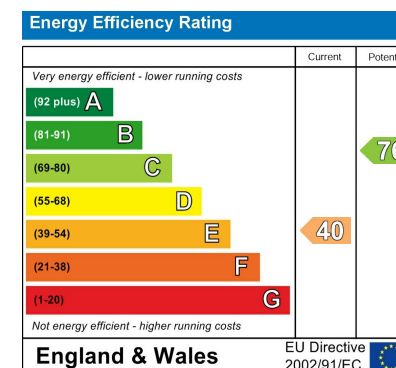
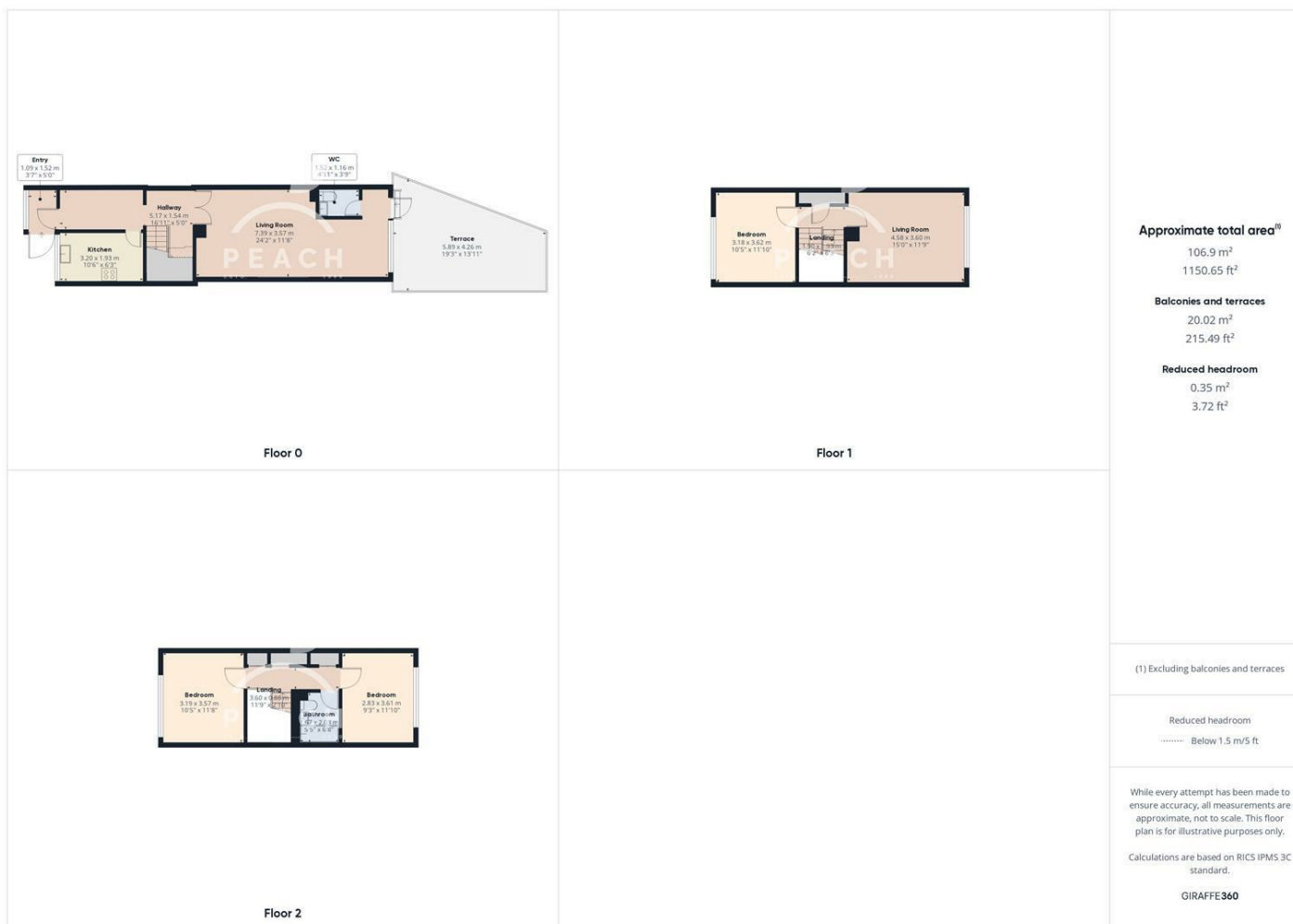
Tenure: Freehold

Council Tax: Band E









Agents Note: Whilst every care has been taken to prepare these particulars, they are for guidance purposes only. All measurements are approximate and are for general guidance purposes only and whilst every care has been taken to ensure their accuracy, they should not be relied upon and potential buyers/tenants are advised to recheck the measurements

**OFFICE ADDRESS**  
88 Cheshire Street  
London  
E2 6EH

**OFFICE DETAILS**  
0207 739 6969  
info@peachproperties.com  
www.peachproperties.com