



PCM

**£2,800 PCM**

**Folgate Street**

London, E1 6UP

An unmissable 2 double bed Spitalfields apartment.

This amazing 2 double bedroom apartment is perfect for anyone that needs to be close to work but also close to everything else! Spitalfields market is calling to you from the window to sample some of its culinary delights or to explore through the market!

The semi open plan living room is spacious and light, the kitchen is modern and has ample room to create, the master has an en-suite shower room and the smaller double has use of the family bathroom. There is plenty of build in storage, there are wood floors throughout and it comes fully furnished.

It offers 24 hr concierge, gym and business amenities. Aldgate is a 5 minutes walk as is the City and Liverpool Street, Shoreditch with all its nightlife is a short walk up the road but everything you could possibly need is on your doorstep in Spitalfields Market.

Available from the June, furnished.

5 weeks deposit: £3346

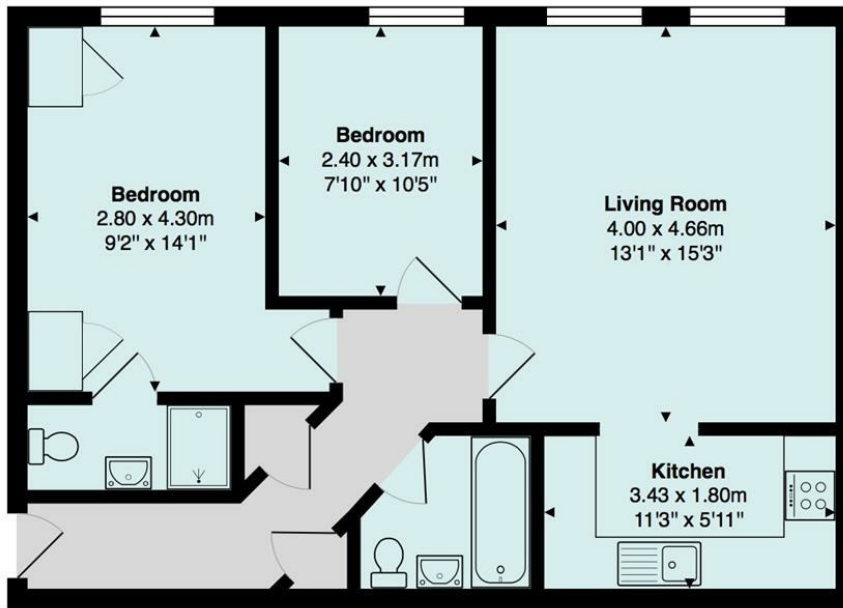
12 month contract

Council tax: Band F









Total Area: 63.0 m² ... 678 ft²

All measurements are approximate and for display purposes only

Energy Efficiency Rating		
	Current	Potential
Very energy efficient - lower running costs		
(92 plus) <b>A</b>		
(81-91) <b>B</b>	83	86
(69-80) <b>C</b>		
(55-68) <b>D</b>		
(39-54) <b>E</b>		
(21-38) <b>F</b>		
(1-20) <b>G</b>		
Not energy efficient - higher running costs		
<b>England &amp; Wales</b>	EU Directive 2002/91/EC	

Agents Note: Whilst every care has been taken to prepare these particulars, they are for guidance purposes only. All measurements are approximate and are for general guidance purposes only and whilst every care has been taken to ensure their accuracy, they should not be relied upon and potential buyers/tenants are advised to recheck the measurements

**OFFICE ADDRESS**  
88 Cheshire Street  
London  
E2 6EH

**OFFICE DETAILS**  
0207 739 6969  
info@peachproperties.com  
www.peachproperties.com