



PRICE GUIDE

**£440,000**

**Bethnal Green Road**

London, E2 6AB

GUIDE PRICE - £440,000 - £460,000

Offered for sale is this good size and spacious 2 double apartment located on the 2nd floor of a purpose built block just a few moments from Brick Lane.

The property features a good size reception room with dual-aspect views, 2 double bedrooms, separate fitted kitchen and family bathroom.

Located moments from Brick Lane, one of the East End's best-known streets, with a colourful history and many different communities passing through over the years. The area has seen a rise in popularity and regeneration over recent decades and has an urban, shabby-chic appeal; renovated warehouses, independent shops, artisan coffee houses, highly rated restaurants and reclaimed vintage stores encourage lots of "hipster" interest. Columbia Road Flower Market, Spitalfields and Whitechapel are all close by as well as Westfield Stratford shopping centre and some fantastic green escapes. Weavers Fields, the largest green space in Bethnal Green, is located 200m away. Further afield there is Haggerston Park, London Fields, Victoria Park - voted London's favourite! – and Queen Elizabeth's Olympic Park a very short tube ride away.

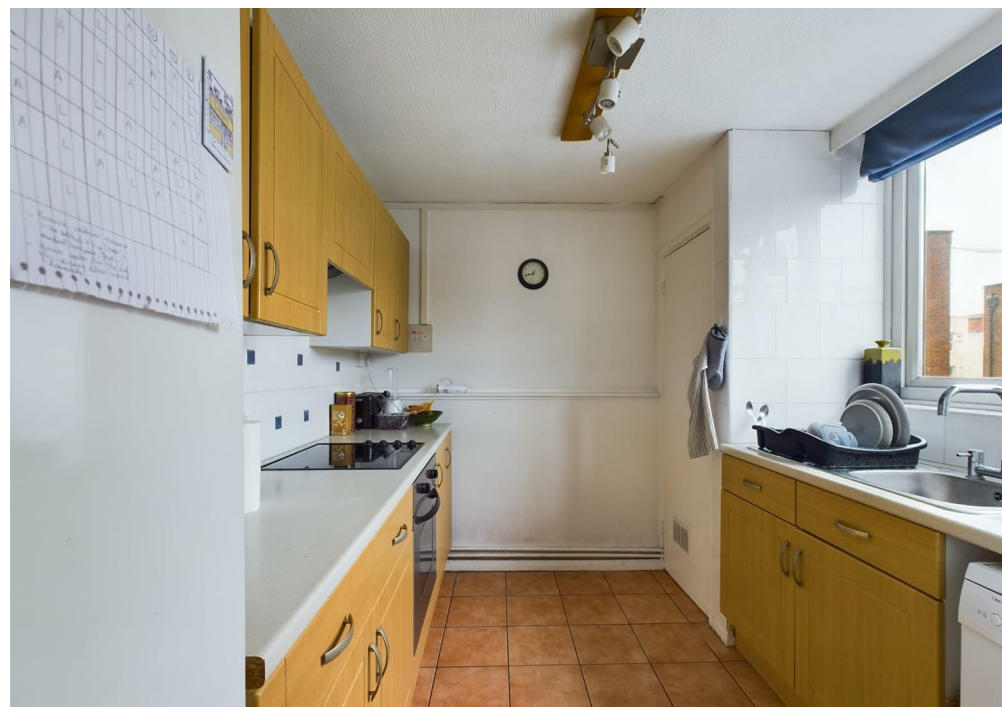
Transport links are outstanding, with Shoreditch High Street station close by, as well as Aldgate, Aldgate East and Whitechapel station (Crossrail) within walking distance. There are a number of bus routes plus Bethnal Green Underground station taking you into and out of the City and beyond.

Tenure: new 189 year lease

Ground Rent: £0

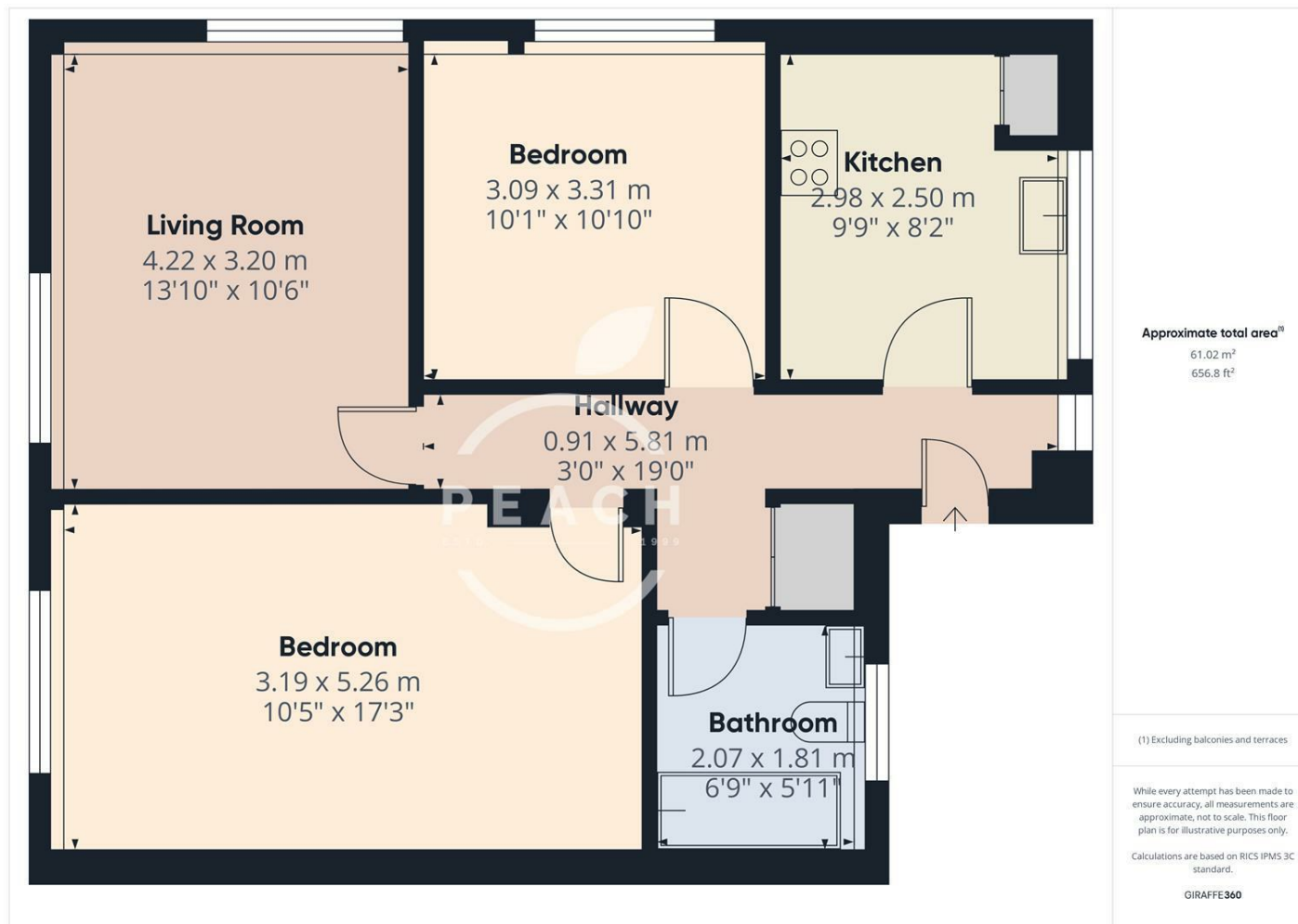
Service Charge: £0

Council Tax: Band B









Energy Efficiency Rating		
	Current	Potential
Very energy efficient - lower running costs		
(92 plus) A		
(81-91) B		
(69-80) C		
(55-68) D		
(39-54) E		
(21-38) F		
(1-20) G		
Not energy efficient - higher running costs		
<b>England &amp; Wales</b>	68	78
	EU Directive 2002/91/EC	

Agents Note: Whilst every care has been taken to prepare these particulars, they are for guidance purposes only. All measurements are approximate and are for general guidance purposes only and whilst every care has been taken to ensure their accuracy, they should not be relied upon and potential buyers/tenants are advised to recheck the measurements

**OFFICE ADDRESS**  
88 Cheshire Street  
London  
E2 6EH

**OFFICE DETAILS**  
0207 739 6969  
info@peachproperties.com  
www.peachproperties.com