



£2,100

50-52 Great Eastern Street

London, EC2A 3EP

Enviably located in the heart of Shoreditch and just a few moments from all of its delights is this well presented warehouse style studio apartment.

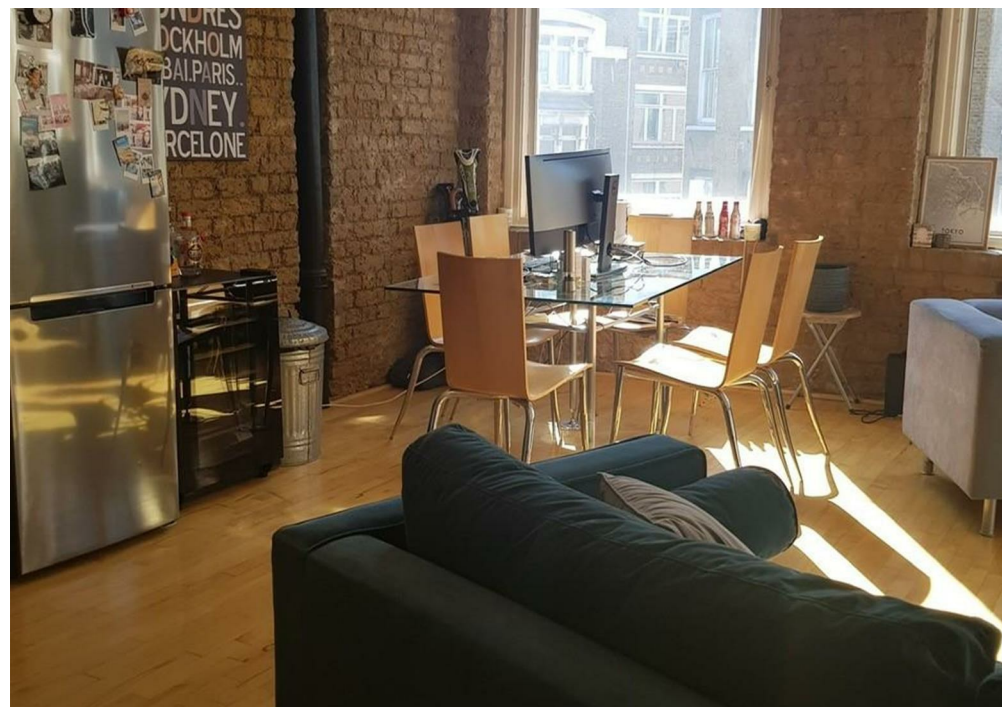
This beautifully converted warehouse features open space living of over 688 sq.ft. of brick and glass with a modern and newly refurbished bathroom, a completely separate bedroom area and large open plan kitchen living room.

This property is on the second floor and is your sought after loft space with exposed brick walls, glass bricks and pine floors, the ideal pad for a single person or couple looking to be in the middle if everywhere!

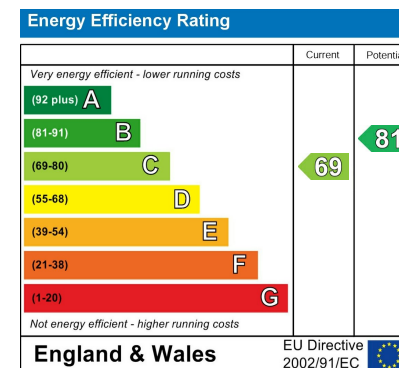
Brick Lane, The Boxpark, Hoxton Square and Columbia Road Flower Market are all close by as well as great transport links with Shoreditch High Street, Liverpool Street and Old Street Stations all within a short walk.

Furnished and available from the 14th October.

Don't delay and call or email us to view.







Agents Note: Whilst every care has been taken to prepare these particulars, they are for guidance purposes only. All measurements are approximate and are for general guidance purposes only and whilst every care has been taken to ensure their accuracy, they should not be relied upon and potential buyers/tenants are advised to recheck the measurements

**OFFICE ADDRESS**

88 Cheshire Street  
London  
E2 6EH

**OFFICE DETAILS**

0207 739 6969  
info@peachproperties.com  
www.peachproperties.com