



Brick Lane, Shoreditch, E1

£2,850 Per Month

- 2 Double Bedroom Apartment
- Brand New
- Private Balcony
- Located On Brick Lane
- Modern Bathroom

Brick Lane, E1 6RF

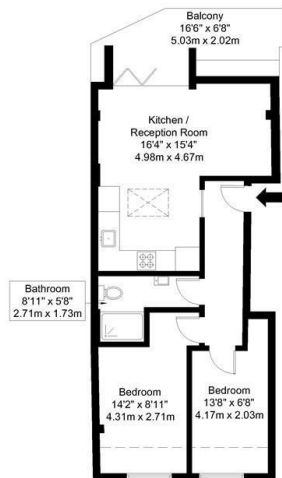
Approx Gross Internal Area = 41.7 sq m / 449 sq ft

Reduced Headroom = 3.1 sq m / 33 sq ft

Balcony = 8.5 sq m / 91 sq ft

Total = 53.3 sq m / 574 sq ft

Reduced Headroom



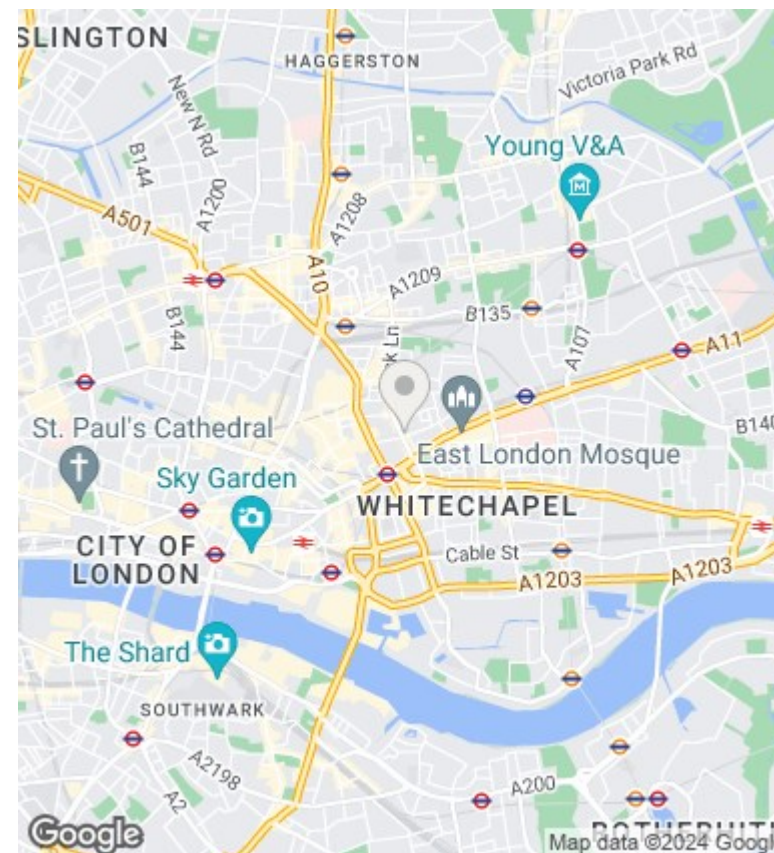
Third Floor

Ref:

Copyright **BLEU
PLAN**

The Floor plan is not to scale and measurements and areas shown are approximate and therefore should be used for illustrative purposes only. The plan has been prepared in accordance with the RICS code of Measuring Practice and whilst we have confidence in the information produced it must not be relied on. Maximum lengths and widths are represented on the floor plan. If there is any aspect of particular importance, you should carry out or commission your own inspection of the property.

Copyright © BLEUPLAN



Directions

Viewings

Viewings by arrangement only. Call 0207 739 6969 to make an appointment.

Council Tax Band

EPC Rating:

C

Energy Efficiency Rating		Current	Potential
<i>Very energy efficient - lower running costs</i>			
(92 plus) A			
(81-91) B		78	79
(69-80) C			
(55-68) D			
(39-54) E			
(21-38) F			
(1-20) G			
<i>Not energy efficient - higher running costs</i>			
England & Wales		EU Directive 2002/91/EC	