



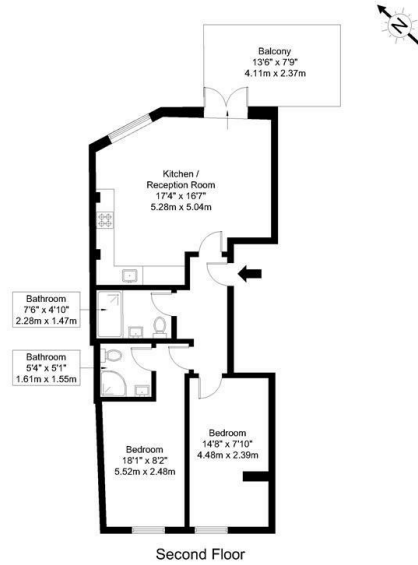
Brick Lane, Shoreditch, E1

£2,900 Per Month

- 2 Double Bedroom Apartment
- Brand New
- Private Balcony
- Located On Brick Lane
- 2 Bathrooms

Brick Lane, E1 6RF

Approx Gross Internal Area = 56.9 sq m / 612 sq ft
 Balcony = 10.2 sq m / 110 sq ft
 Total = 67.1 sq m / 722 sq ft

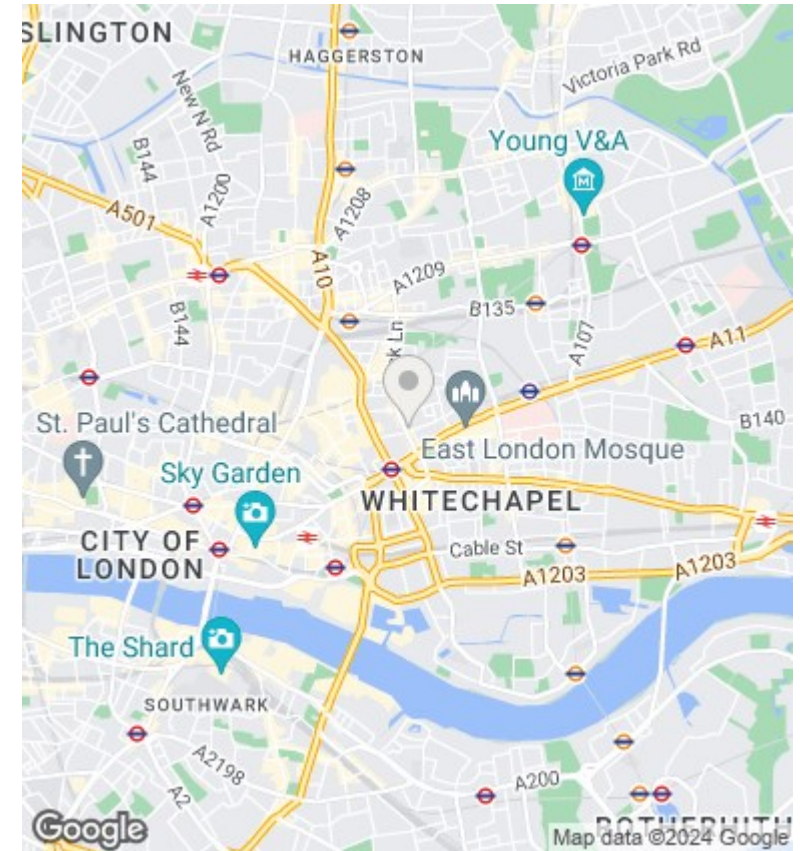


Ref:

Copyright **BLEUPLAN**

The Floor plan is not to scale and measurements and areas shown are approximate and therefore should be used for illustrative purposes only. The plan has been prepared in accordance with the RICS code of Measuring Practice and whilst we have confidence in the information produced it must not be relied on. Maximum lengths and widths are represented on the floor plan. If there is any aspect of particular importance, you should carry out or commission your own inspection of the property.

Copyright © BLEUPLAN



Directions

Viewings

Viewings by arrangement only. Call 0207 739 6969 to make an appointment.

Council Tax Band

EPC Rating:

C

Energy Efficiency Rating		
	Current	Potential
Very energy efficient - lower running costs		
(92 plus) A		
(81-91) B	78	79
(69-80) C		
(55-68) D		
(39-54) E		
(21-38) F		
(1-20) G		
Not energy efficient - higher running costs		
England & Wales	EU Directive 2002/91/EC	