



PER MONTH

**£6,083 Per Month**

**Club Row**

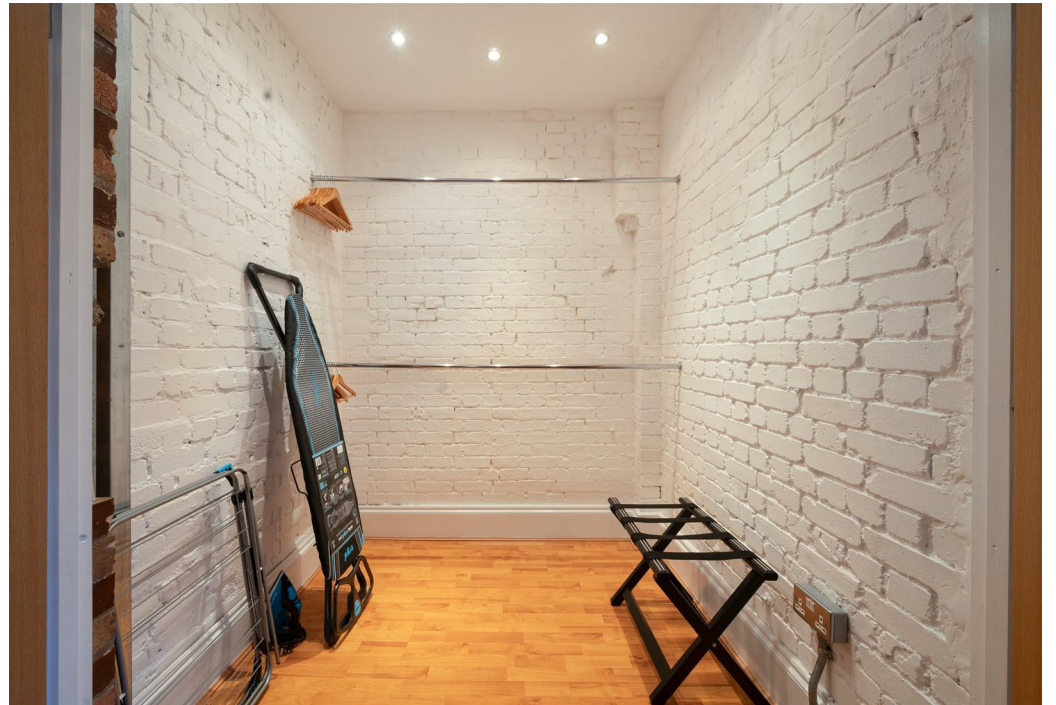
London, E1 6JX

£200 Per Night - SHORT TERM LET/HOLIDAY LET

At over 100 square metres, our premier penthouse loft apartment really is out of this world. Situated on the top floor of a Victorian animal warehouse, it retains many original loft features including double height ceilings, large Victorian sash windows, wood beams, exposed brick work and sanded wood floors. This amazing loft can sleep up to 5 guests in 1 double bedroom, a mezzanine level bedroom and a 5-star hotel quality fold out single bed, that can be set up in the Living room.

Amenities: High speed WIFI, fridge, dishes and silverware, cooking basics, oven, hob, heating, hair dryer, hangers, iron, fire extinguisher, carbon monoxide alarm, smoke alarm and first aid kit.





## Flat 4



Total area: approx. 97.3 sq. metres (1047.1 sq. feet)

Energy Efficiency Rating		Current	Potential
Very energy efficient - lower running costs			
(92 plus) <b>A</b>			
(81-91) <b>B</b>			
(69-80) <b>C</b>			
(55-68) <b>D</b>			
(39-54) <b>E</b>			
(21-38) <b>F</b>			
(1-20) <b>G</b>			
Not energy efficient - higher running costs			
<b>England &amp; Wales</b>	EU Directive 2002/91/EC		

Agents Note: Whilst every care has been taken to prepare these particulars, they are for guidance purposes only. All measurements are approximate and are for general guidance purposes only and whilst every care has been taken to ensure their accuracy, they should not be relied upon and potential buyers/tenants are advised to recheck the measurements

### OFFICE ADDRESS

88 Cheshire Street  
London  
E2 6EH

### OFFICE DETAILS

0207 739 6969  
info@peachproperties.com  
www.peachproperties.com