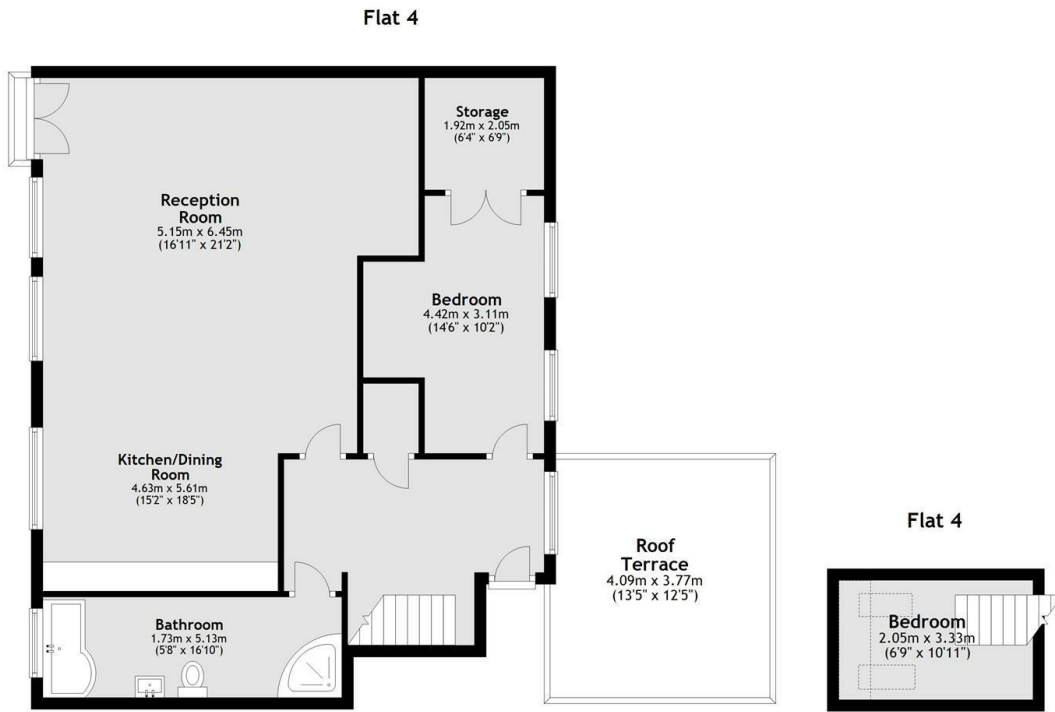




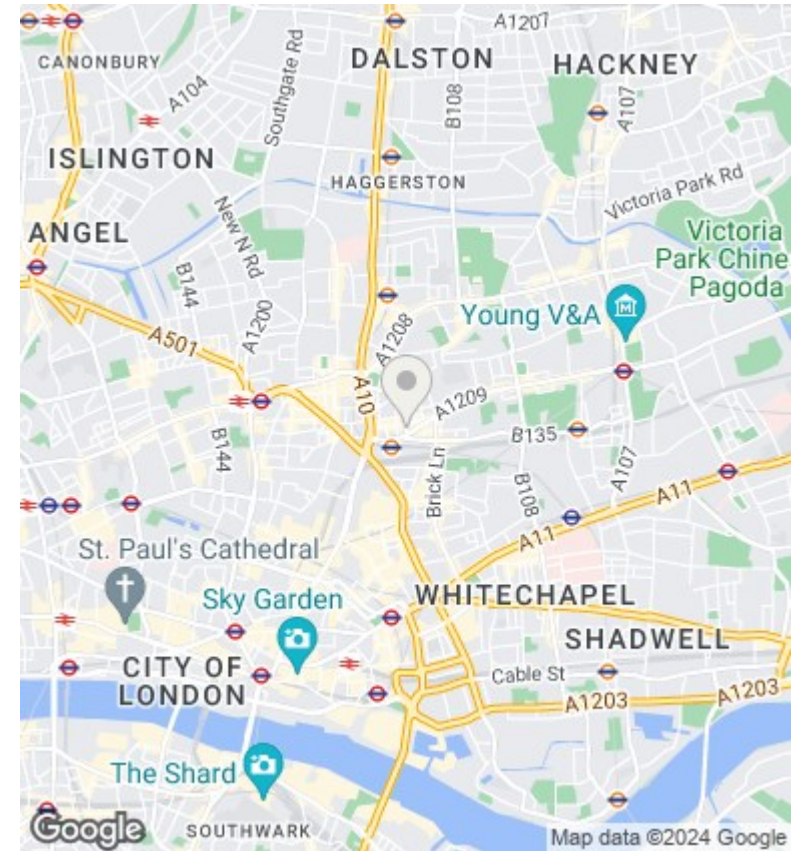
Club Row, London

£6,083 Per Month

- £200 per night, SHORT TERM LET/HOLIDAY LET
- Includes All Bills
- Penthouse
- Stylish Design
- Short Walk To The City
- Shoreditch
- Furnished To a High Standard



Total area: approx. 97.3 sq. metres (1047.1 sq. feet)



Directions

Viewings

Viewings by arrangement only. Call 0207 739 6969 to make an appointment.

Council Tax Band

EPC Rating:

Energy Efficiency Rating		
	Current	Potential
<i>Very energy efficient - lower running costs</i>		
(92 plus) A		
(81-91) B		
(69-80) C		
(55-68) D		
(39-54) E		
(21-38) F		
(1-20) G		
<i>Not energy efficient - higher running costs</i>		
England & Wales	EU Directive 2002/91/EC	