



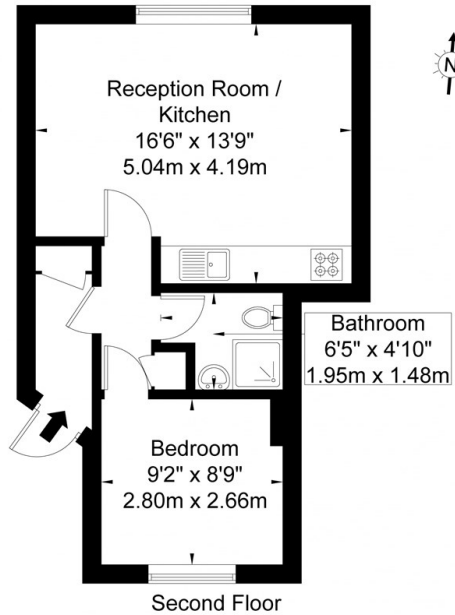
Bethnal Green Road, Shoreditch, E2

£1,900 PCM

- 1 Double Bedroom Apartment
- Wood Flooring
- Available Now
- Single Occupants Only
- Top Floor
- Open Plan Reception Room
- Short Walk To Liverpool Street Station
- Seconds From Brick Lane
- Shower Room
- Moments From Shoreditch High Street Station

Bethnal Green Road, Shoreditch, E2 6DG

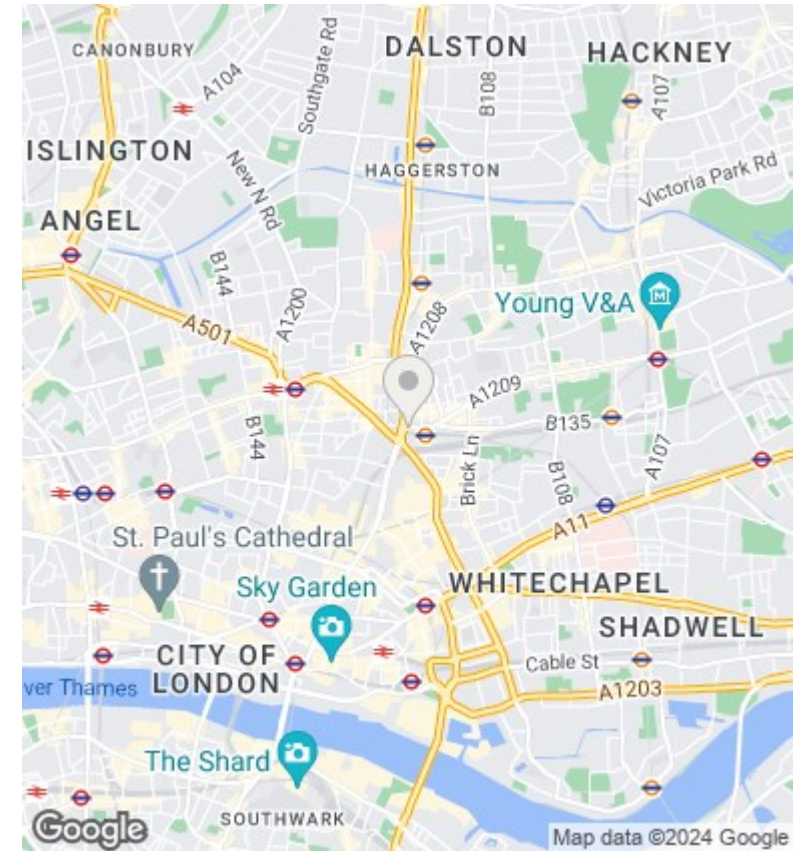
Approx. Gross Internal Area = 36.2 sq m / 389 sq ft



Ref

Copyright BLEU PLAN

Disclaimer: Floor plan measurements are approximate and are for illustrative purposes only. While we do not doubt the floor plan accuracy and completeness, you or your advisors should conduct a careful, independent investigation of the property in respect of monetary valuation.



Directions

Viewings

Viewings by arrangement only. Call 0207 739 6969 to make an appointment.

Council Tax Band

B

EPC Rating:

Energy Efficiency Rating		
	Current	Potential
<i>Very energy efficient - lower running costs</i>		
(92 plus) A		
(81-91) B		
(69-80) C		
(55-68) D		
(39-54) E		
(21-38) F		
(1-20) G		
<i>Not energy efficient - higher running costs</i>		
England & Wales	EU Directive 2002/91/EC	