



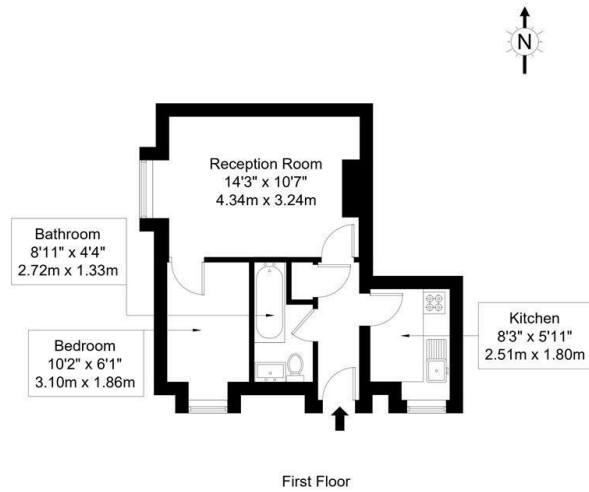
## Angel House, Pentonville Road, Angel, N1

£1,750 Per Month

- 1 Bedroom
- New Kitchen
- Renovated Throughout
- Modern Bathroom
- Wood Flooring
- Available Now

## Angel House, N1 9HJ

Approx Gross Internal Area = 32.51 sq m / 349 sq ft

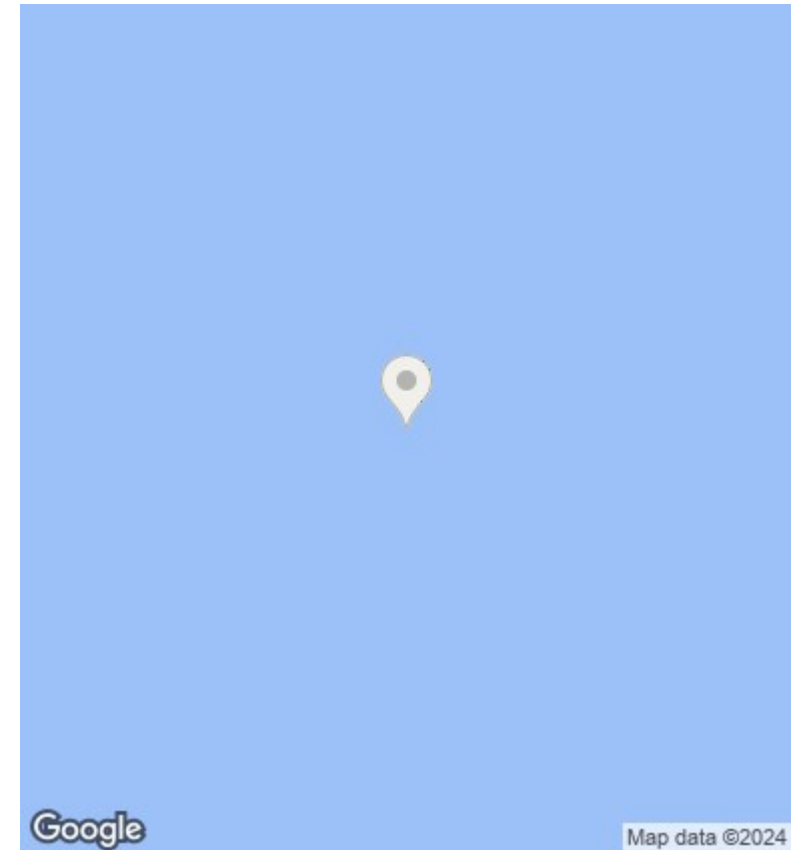


Ref :

Copyright

**B L E U  
P L A N**

The Floor plan is not to scale and measurements and areas shown are approximate and therefore should be used for illustrative purposes only. The plan has been prepared in accordance with the RICS code of Measuring Practice and whilst we have confidence in the information produced it must not be relied on. If there is any aspect of particular importance, you should carry out or commission your own inspection of the property.  
Copyright © BLEUPLAN



## Directions

## Viewings

Viewings by arrangement only. Call 0207 739 6969 to make an appointment.

## Council Tax Band

C

## EPC Rating:

C

Energy Efficiency Rating		Current	Potential
<i>Very energy efficient - lower running costs</i>			
(92 plus) <b>A</b>			
(81-91) <b>B</b>			
(69-80) <b>C</b>		70	78
(55-68) <b>D</b>			
(39-54) <b>E</b>			
(21-38) <b>F</b>			
(1-20) <b>G</b>			
<i>Not energy efficient - higher running costs</i>			
<b>England &amp; Wales</b>		EU Directive 2002/91/EC	