



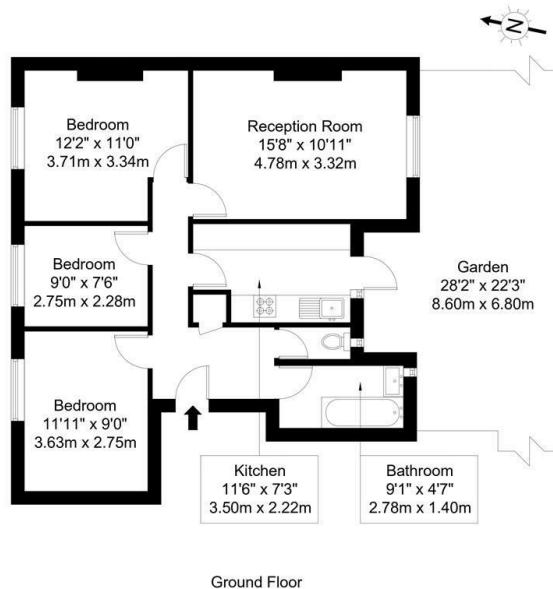
## Thornaby House, Canrobert Street, Bethnal Green, E2

£3,100 Per Month

- 3 bedroom apartment
- large reception room
- private garden
- close to Bethnal Green Station
- renovated throughout

## Thornaby House, E2 0BE

Approx Gross Internal Area = 67.41 sq m / 725 sq ft  
 Garden Area = 61.21 m / 658 sq ft  
 Total Area = 128.46 sq m / 1382 sq ft



Ref :

Copyright **BLEU PLAN**

The Floor plan is not to scale and measurements and areas shown are approximate and therefore should be used for illustrative purposes only. The plan has been prepared in accordance with the RICS code of Measuring Practice and whilst we have confidence in the information produced it must not be relied on. If there is any aspect of particular importance, you should carry out or commission your own inspection of the property.  
 Copyright @ BLEUPLAN

## Directions

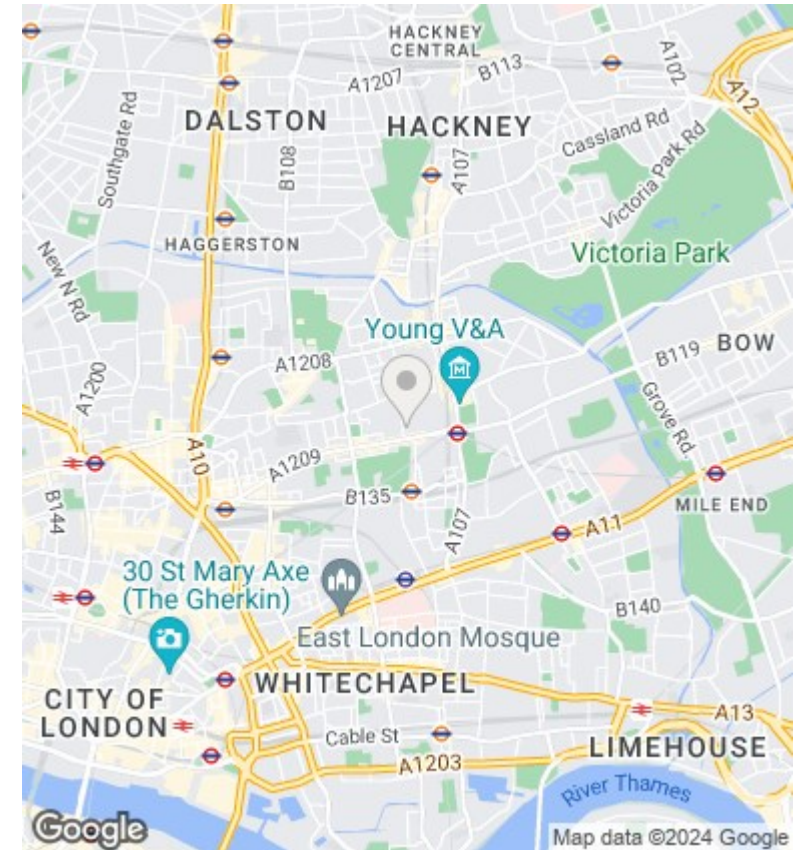
## Viewings

Viewings by arrangement only. Call 0207 739 6969 to make an appointment.

## Council Tax Band

C

## EPC Rating:



Energy Efficiency Rating		
	Current	Potential
<i>Very energy efficient - lower running costs</i>		
(92 plus) <b>A</b>		
(81-91) <b>B</b>		
(69-80) <b>C</b>		
(55-68) <b>D</b>		
(39-54) <b>E</b>		
(21-38) <b>F</b>		
(1-20) <b>G</b>		
<i>Not energy efficient - higher running costs</i>		
<b>England &amp; Wales</b>	EU Directive 2002/91/EC	