



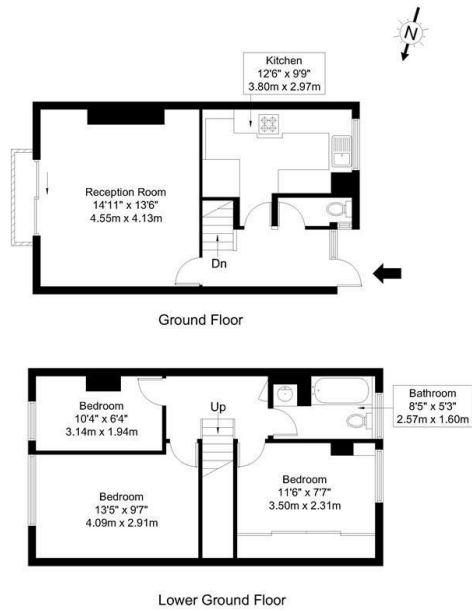
Bletchley Court, Bletchley Street, Old Street N1

£2,800 Per Week

- 3 Bedroom Apartment
- Well Presented Ex-La Building
- Gas Central Heating
- Private Balcony
- Good Size Reception
- Close To Old Street Station
- Split Level
- Top Floor
- Close to Hoxton Square
- Lift Facilities

Wenlock Street, N1 7NX

Approx Gross Internal Area = 75 sq m / 807 sq ft

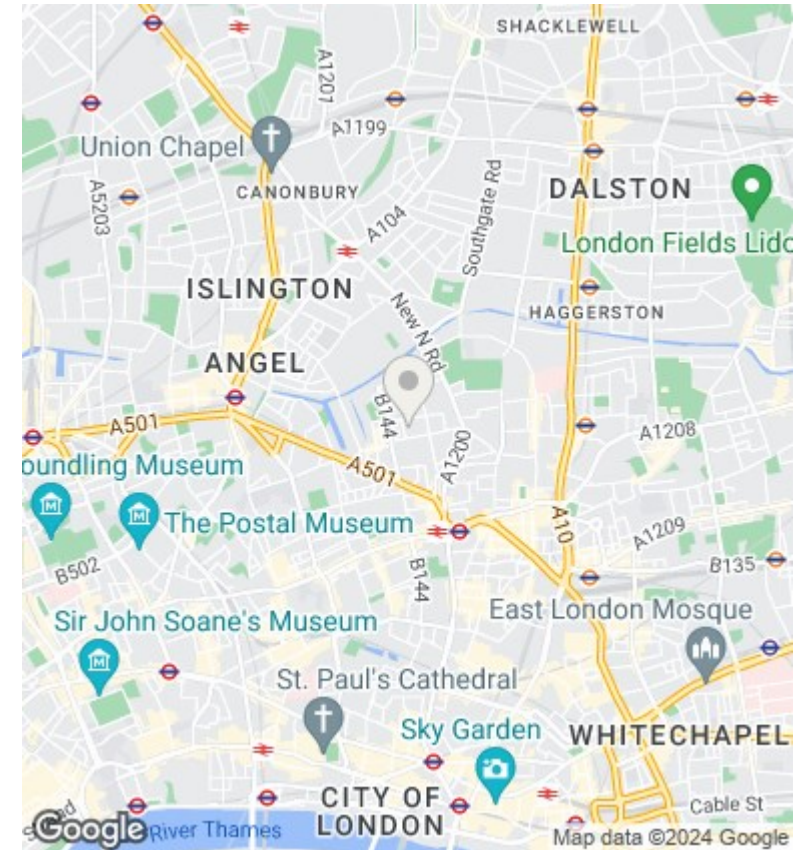


Ref:

Copyright **BLEU PLAN**

The Floor plan is not to scale and measurements and areas shown are approximate and therefore should be used for illustrative purposes only. The plan has been prepared in accordance with the RICS code of Measuring Practice and whilst we have confidence in the information produced it must not be relied on. Maximum lengths and widths are represented on the floor plan. If there is any aspect of particular importance, you should carry out or commission your own inspection of the property.

Copyright @ BLEUPLAN



Directions

Viewings

Viewings by arrangement only. Call 0207 739 6969 to make an appointment.

Council Tax Band

C

EPC Rating:

D

Energy Efficiency Rating		
	Current	Potential
<i>Very energy efficient - lower running costs</i>		
(92 plus) A		
(81-91) B		75
(69-80) C		
(55-68) D	62	
(39-54) E		
(21-38) F		
(1-20) G		
<i>Not energy efficient - higher running costs</i>		
England & Wales	EU Directive 2002/91/EC	