



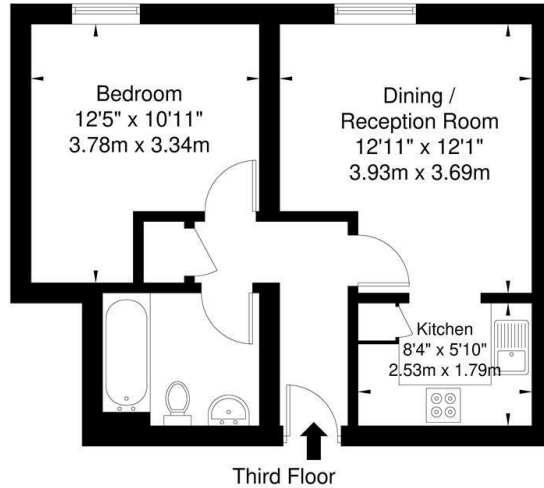
Greencourt House, Mile End Road, Stepney Green, E1

£1,700 PCM

- 1 Bedroom Apartment
- Good Size Reception Room
- Laminate Flooring
- Double Glazed
- Modern Development
- Close To Stepney Green Station
- Short Walk To Mile End Station
- Secure Parking
- Lift Facilities
- Gas Heating

Greencourt House, Mile End Road, E1 4LD

Approx. Gross Internal Area = 41.1 sq m / 442 sq ft

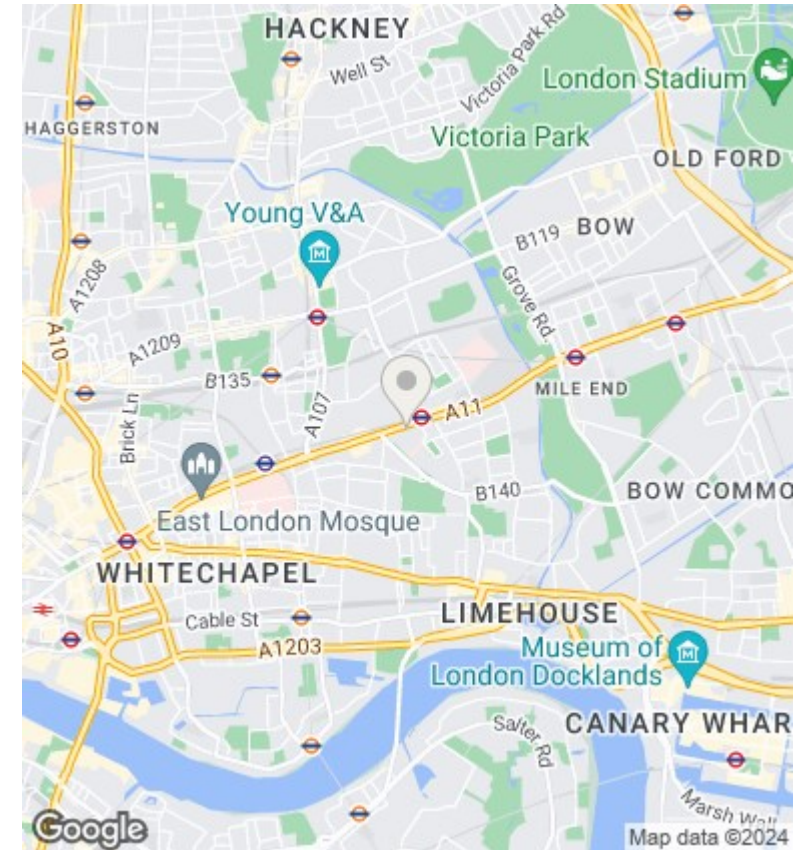


Ref

Copyright

**BLEU
PLAN**

The Floor plan is not to scale and measurements and areas shown are approximate and therefore should be used for illustrative purposes only. The plan has been prepared in accordance with the RICS code of Measuring Practice and whilst we have confidence in the information produced it must not be relied on. If there is any aspect of particular importance, you should carry out or commission your own inspection of the property.
Copyright © BLEUPLAN



Directions

Viewings

Viewings by arrangement only. Call 0207 739 6969 to make an appointment.

Council Tax Band

C

EPC Rating:

B

Energy Efficiency Rating		Current	Potential
<i>Very energy efficient - lower running costs</i>			
(92 plus) A			
(81-91) B		84	87
(69-80) C			
(55-68) D			
(39-54) E			
(21-38) F			
(1-20) G			
<i>Not energy efficient - higher running costs</i>			
England & Wales		EU Directive 2002/91/EC	