



## Fondent Court, Taylor Place, Bow, E3

£390,000

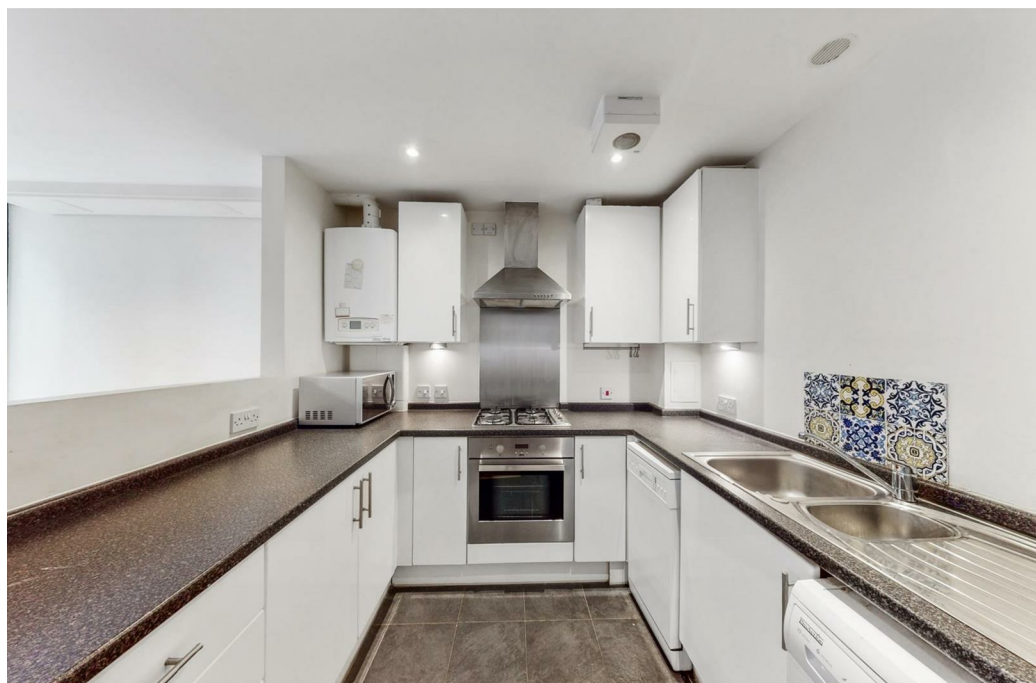
- 2 Double Bedroom Apartment
- 670 Square Feet
- 5th Floor
- Located Close to Bow Road and Bow Church Stations
- Open Plan Reception Room
- Gated Development
- Lift Facilities
- Private Balcony
- Modern Kitchen And Bathroom
- Chain Free

# Fondent Court, Taylor Place, Bow, E3

Set within a private gated development is this 5th floor 2 double bedroom apartment with private balcony.



Council Tax Band: D



Offered for sale is this well presented 2 bedroom apartment set n the 5th floor of a modern gated development in Bow.

The property features a bright and spacious open plan reception room with access to a private balcony and modern fitted kitchen.

There is a large double bedroom, 2nd bedroom, storage and a family bathroom.

The property is located just a few moments from Bow Road Station and Bow Church DLR with Westfields, the Olympic Park and Stratford Station also close by.

Service Charge: £3720

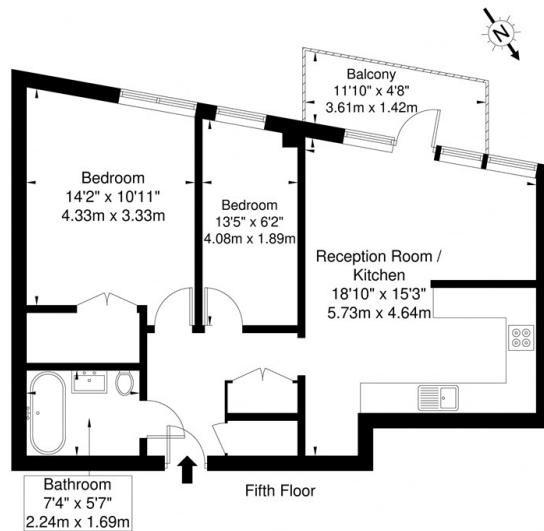
Leasehold: 90 years

Ground Rent: n/a

Council Tax: Band D

## Fodent Court, Taylor Place, E3 2PJ

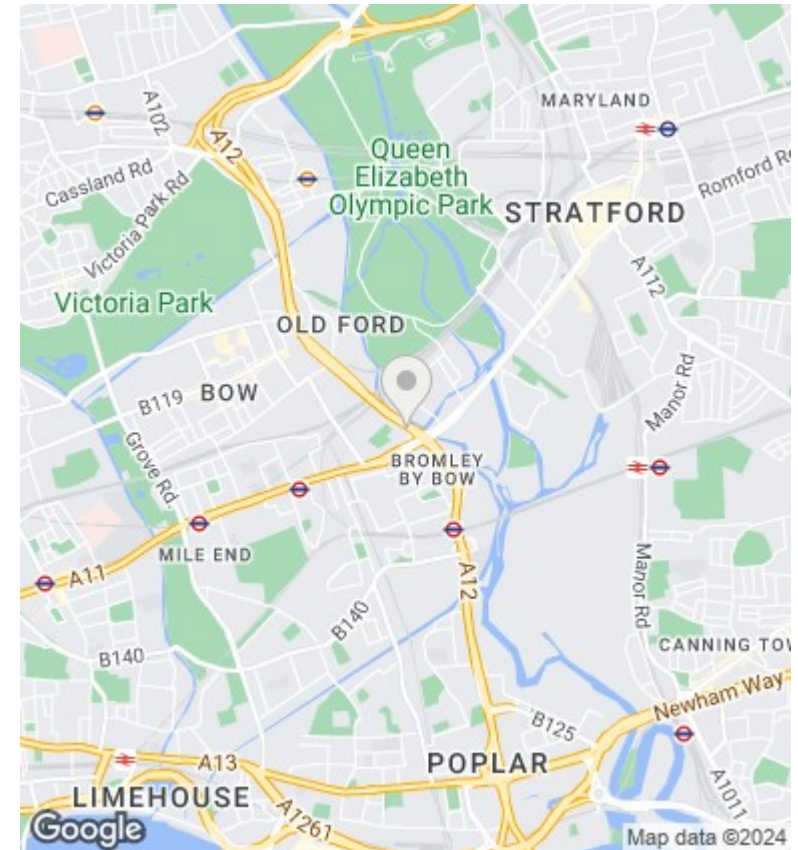
Approx. Gross Internal Area = 62.3 sq m / 670 sq ft



Ref

Copyright **BLEU PLAN**

Disclaimer : Floor plan measurements are approximate and are for illustrative purposes only. While we do not doubt the floor plan accuracy and completeness, you or your advisors should conduct a careful, independent investigation of the property in respect of monetary valuation.



## Directions

## Viewings

Viewings by arrangement only. Call 0207 739 6969 to make an appointment.

## Council Tax Band

D

Energy Efficiency Rating		Current	Potential
<i>Very energy efficient - lower running costs</i>			
(92 plus) <b>A</b>			
(81-91) <b>B</b>			
(69-80) <b>C</b>			
(55-68) <b>D</b>			
(39-54) <b>E</b>			
(21-38) <b>F</b>			
(1-20) <b>G</b>			
<i>Not energy efficient - higher running costs</i>			
<b>England &amp; Wales</b>		EU Directive 2002/91/EC	