



W1 Place, Marylebone Lane, Marleybone, W1

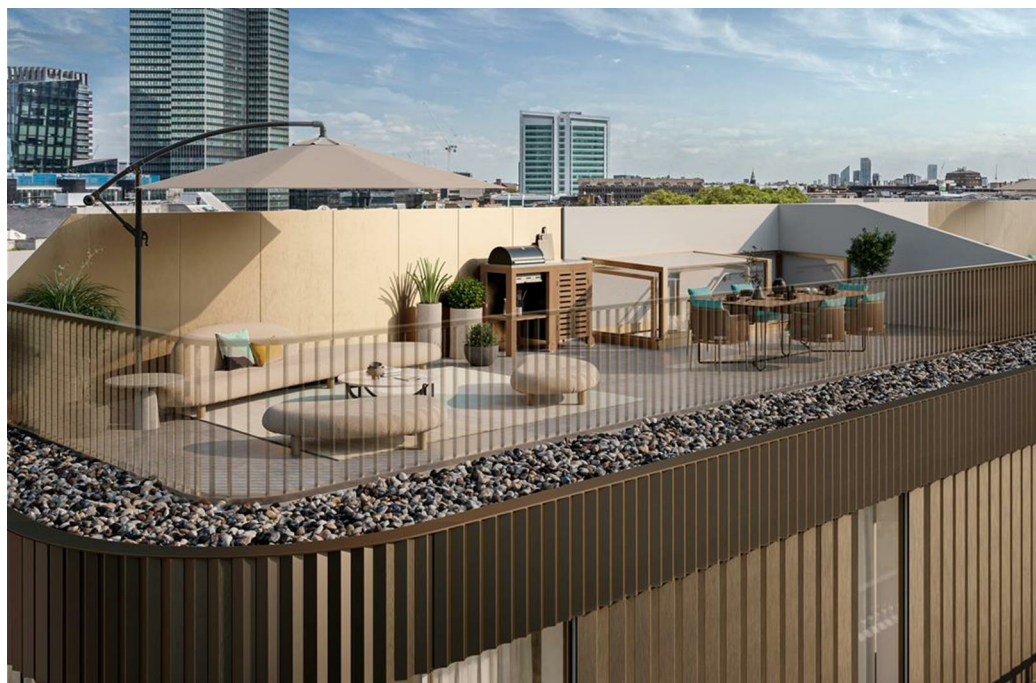
Guide Price £1,591,000

W1 Place, Marylebone Lane, Marleybone, W1

Boutique collection of 37 one, two and three bedroom luxury residences Central W1 location starting at £1,595,100



Council Tax Band:



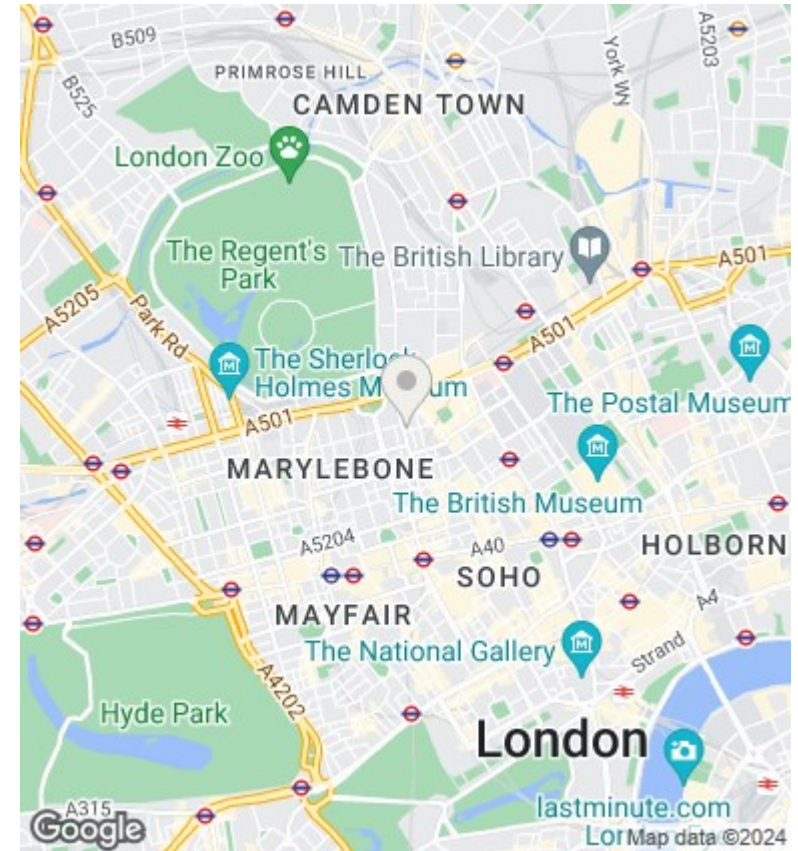
Last 5 units remaining ranging from £1,591,000 - £3,208,000

This latest new-build development offers you an absolutely rare opportunity to enjoy the best of modern design and refined traditions on Great Portland Street, Marylebone.

The 37 unit scheme will include a selection of one, two and three bedroom luxury residences with South, West and East Facing views. All apartments come with generously proportioned open plan living and kitchen areas framed by the floor-to-ceiling bay windows, ensuring a wealth of natural light and a view over the famed street.

The exterior boasts a bright, natural limestone facade coupled with bronze-coloured French windows. Inspired by the distinctive glaze of Japanese porcelain, the building's balustrades introduce additional artistic flair and texture as well as frame the windows from the outside in.

Please contact us for full availability price list, brochures and further information.



Directions

Viewings

Viewings by arrangement only. Call 0207 739 6969 to make an appointment.

Council Tax Band

Energy Efficiency Rating		
	Current	Potential
<i>Very energy efficient - lower running costs</i>		
(92 plus) A		
(81-91) B		
(69-80) C		
(55-68) D		
(39-54) E		
(21-38) F		
(1-20) G		
<i>Not energy efficient - higher running costs</i>		
England & Wales	EU Directive 2002/91/EC	