



Cheshire Street, Shoreditch, E2

Guide Price £385,000

Cheshire Street, Shoreditch, E2

1 Bedroom apartment set within a modern development on Cheshire Street just seconds from Brick Lane.



Council Tax Band: C



Guide Price: £385,000 - £400,000

1 Bedroom apartment set within a modern development just moments from Brick Lane.

The property features a bright reception room with open plan reception and amazing views of the City. The apartment also features good size double bedroom, modern fitted bathroom with bath and shower attachment

Location within a desirable location in the heart of Shoreditch, with a rich array of boutiques, coffee shops, trendy bars and restaurants.

Transport links are excellent with, Shoreditch High-Street, Aldgate East tube station, Liverpool Street transport hub as well as major bus routes into and out of the City.

Offered on a chain free basis.

Council Tax: Band C

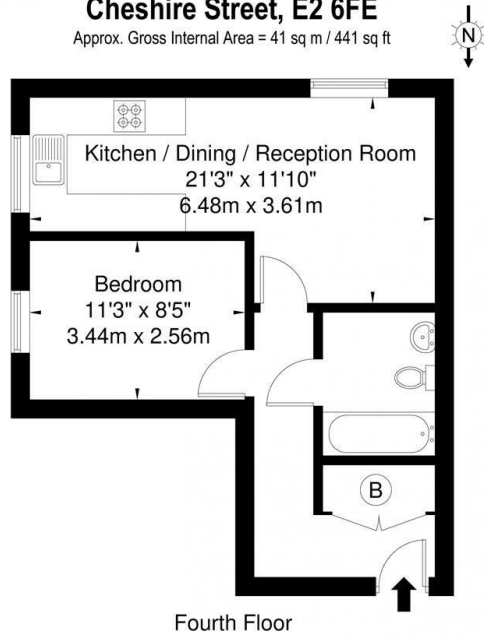
Leasehold: 982 years remaining

Service Charge: £1956

Ground Rent: £300 per annum

Cheshire Street, E2 6FE

Approx. Gross Internal Area = 41 sq m / 441 sq ft

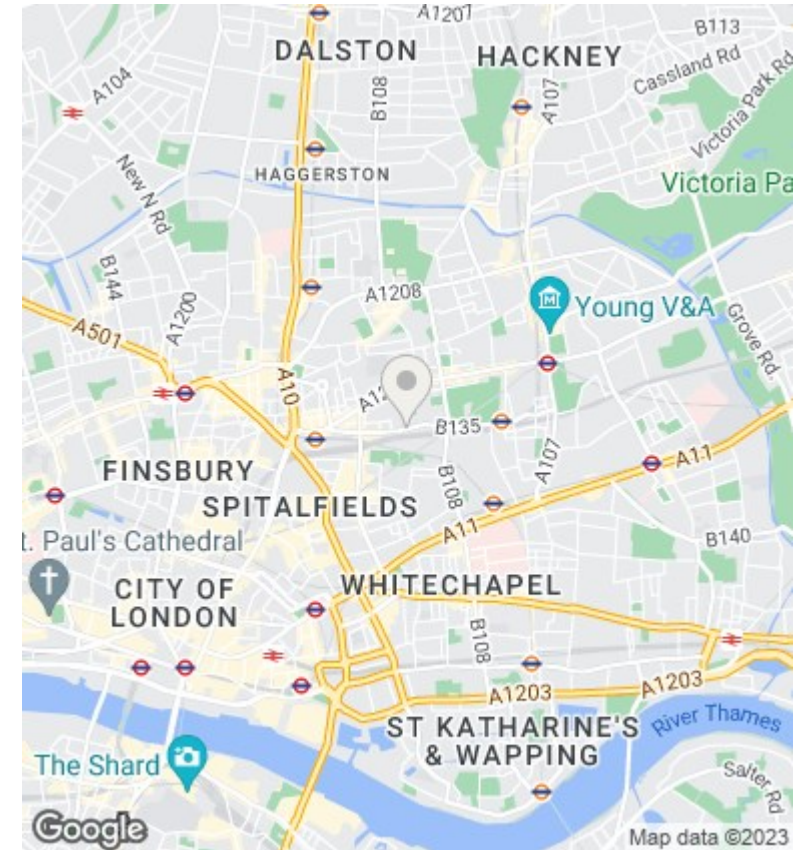


Ref

Copyright

**BLEU
PLAN**

The Floor plan is not to scale and measurements and areas shown are approximate and therefore should be used for illustrative purposes only. The plan has been prepared in accordance with the RICS code of Measuring Practice and whilst we have confidence in the information produced it must not be relied on. If there is any aspect of particular importance, you should carry out or commission your own inspection of the property.
Copyright © BLEUPLAN



Directions

Viewings

Viewings by arrangement only. Call 0207 739 6969 to make an appointment.

Council Tax Band

B

Energy Efficiency Rating		Current	Potential
<i>Very energy efficient - lower running costs</i>			
(92 plus) A			
(81-91) B		73	81
(69-80) C			
(55-68) D			
(39-54) E			
(21-38) F			
(1-20) G			
<i>Not energy efficient - higher running costs</i>			
England & Wales		EU Directive 2002/91/EC	