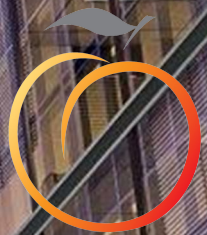


ASKING PRICE

**£1,400,000**

**Principal Place**

London, EC2A 2BA





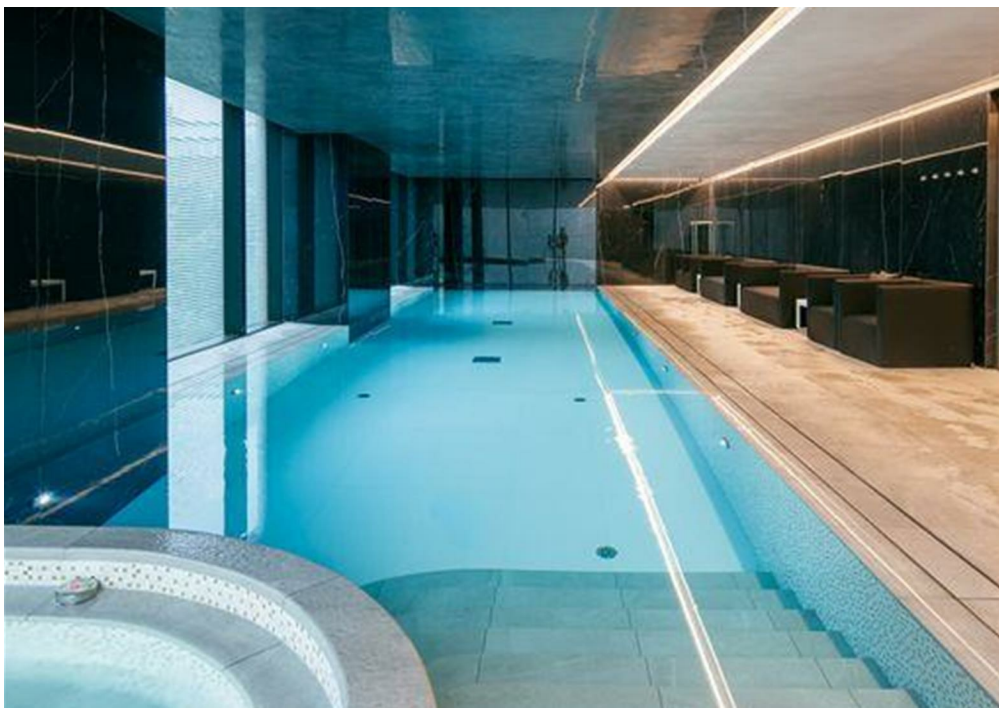
Fully designed by renowned architects Foster And Partners, Principal Tower features a 24 hour concierge service, residents gymnasium, swimming pool, sauna, jacuzzi and steam room as well as a residents lounge, bar and screening room.

Located just a few moments from Liverpool Street Station with an array of boutiques, bars and restaurants of Bishops Gate, Shoreditch and Brick Lane all on your doorstep as well as easy access to Shoreditch High Street and Old Street Stations.

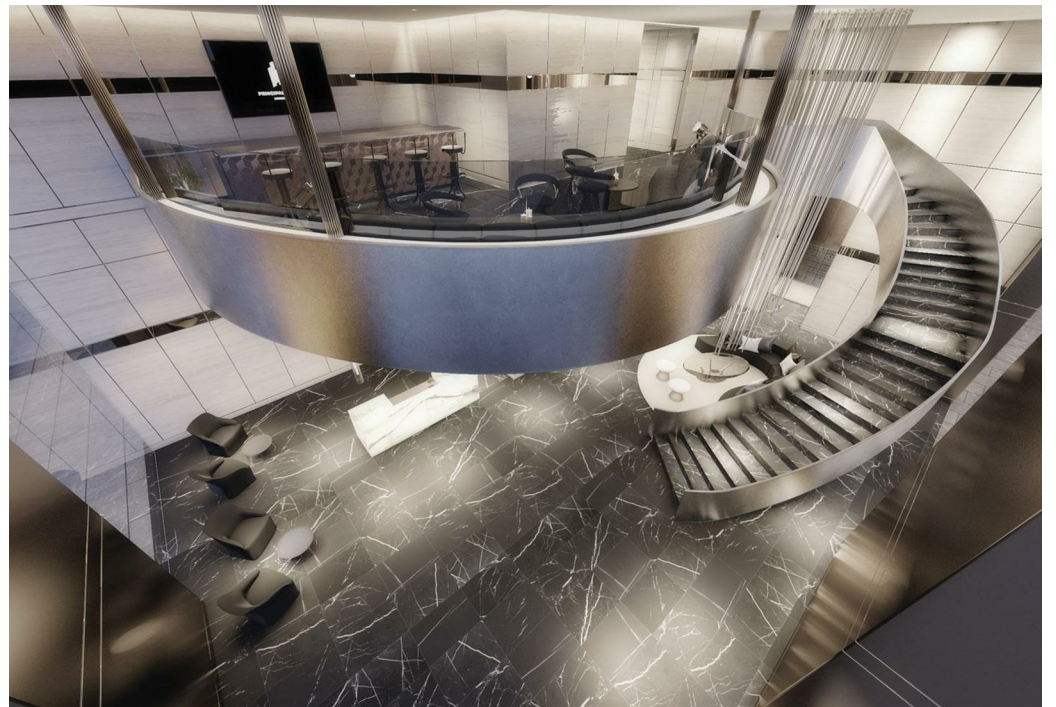
Ranging from £1,400,000 - £5,750,000 is this selection of 1,2 and 3 bedroom luxury off plan apartments.


Please note images include CGIs and photos of a show flat and are not specifically of this apartment.

Please contact us for full brochure/price lists and further details







Energy Efficiency Rating		
	Current	Potential
<i>Very energy efficient - lower running costs</i>		
(92 plus) <b>A</b>		
(81-91) <b>B</b>		
(69-80) <b>C</b>		
(55-68) <b>D</b>		
(39-54) <b>E</b>		
(21-38) <b>F</b>		
(1-20) <b>G</b>		
<i>Not energy efficient - higher running costs</i>		
<b>England &amp; Wales</b>	EU Directive 2002/91/EC	

Agents Note: Whilst every care has been taken to prepare these particulars, they are for guidance purposes only. All measurements are approximate and are for general guidance purposes only and whilst every care has been taken to ensure their accuracy, they should not be relied upon and potential buyers/tenants are advised to recheck the measurements

**OFFICE ADDRESS**

88 Cheshire Street  
London  
E2 6EH

**OFFICE DETAILS**

0207 739 6969  
info@peachproperties.com  
www.peachproperties.com