



Limefitt Holiday Park, Patterdale Road, Windermere, LA23 1PA

Asking Price £279,995

- Aspire Menai Lodge
- En-Suite in Master
- Hot Tub Included
- Set of Double Patio Doors
- Three Spacious Bedroom Holiday Home
- Main Family Bathroom
- Large L Shaped Decking
- Other Homes are Available on this Park, Contact Us for More Information & Prices

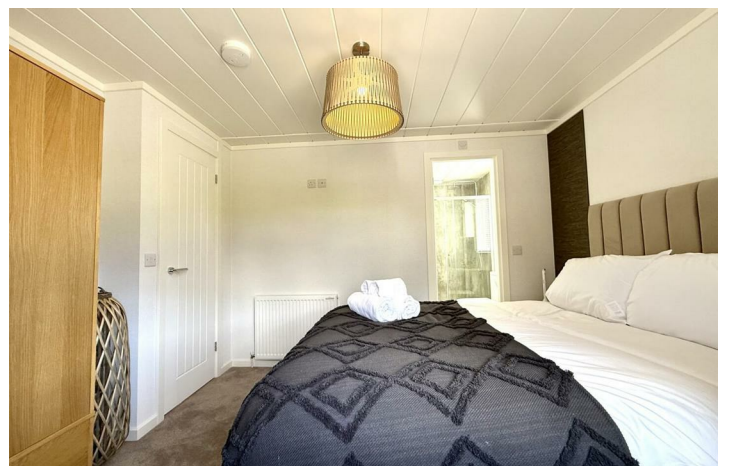
Patterdale Road, Troutbeck, Windermere LA23 1PA

The name Menai is fitting for Aspire's new lodge in several ways as it celebrates the spectacular area Aspire (lodge manufacturer) are based and the community they are part of. The Menai lodge is also designed to welcome customers into the Aspire range, just as the Menai bridges welcome people to the region. The Menai lodge is well laid out, with the sofas making the most of the stunning views and the kitchen and dining area being nestled at the heart of the home. The bedrooms arrangements offer flexibility, and the ensuite master bedroom provides a touch of luxury. With warm colour schemes throughout, the Menai is the ideal lodge for your home from home.

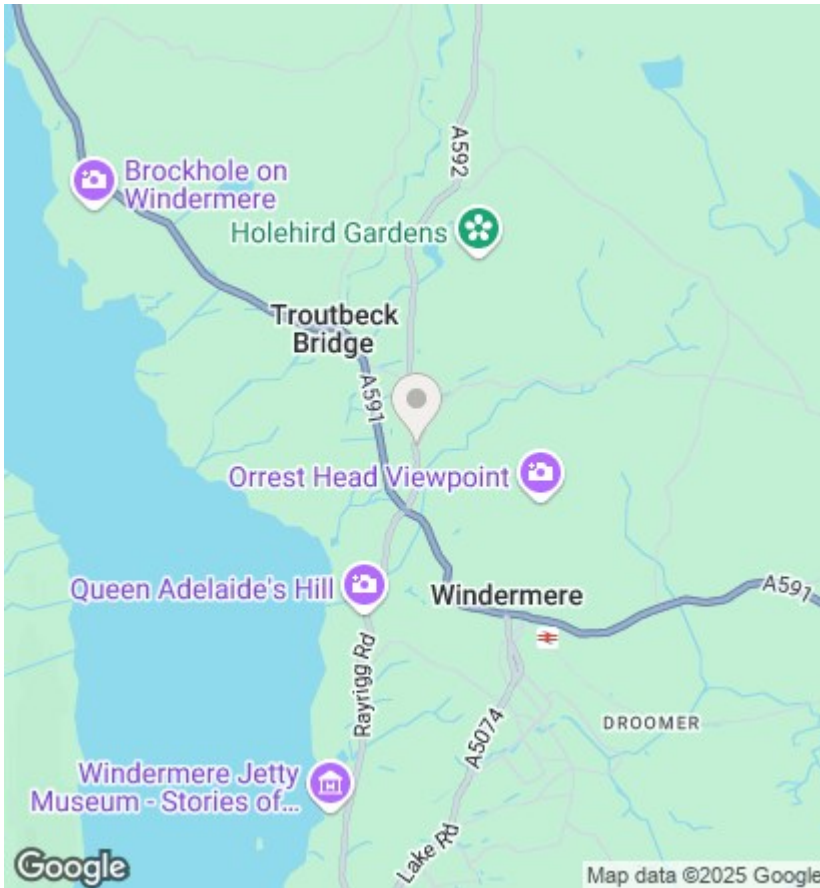


Council Tax
Band: Exempt

Tenure: Leasehold







Notice

Please note we have not tested any apparatus, fixtures, fitting or services. Interested parties must undertake their own investigation into the working order of these items. All measurements stated in this brochure are approximate and photographs provided are for guidance only.

Viewings

Viewings by arrangement only. Call 01772 633399 to make an appointment.

EPC Rating:

Misrepresentation Act 1967:- tempoleisure.co.uk looks to ensure that all our sales particulars are accurate and reliable, we believe the above details to be correct but their accuracy cannot be guaranteed and they do not constitute any part of an offer or contract. Any intending purchasers or lessees must satisfy themselves by inspection or otherwise as to the correctness of each statement in these particulars before entering into any formal contract to purchase or to rent this property.