



Limefitt Park, Patterdale Road, Windermere, LA23 1PA

Asking Price £140,000

- Pristine Two Bedroom Lodge
- Master En-Suite Bedroom including Walk-In Wardrobe
- Good Views of the Troutbeck Valley
- Viewing Essential to Fully Appreciate
- Located on Limefitt Holiday Park
- Spacious Open Plan Lounge, Dining and Kitchen area
- Newly Replaced Large Outside Deck Area



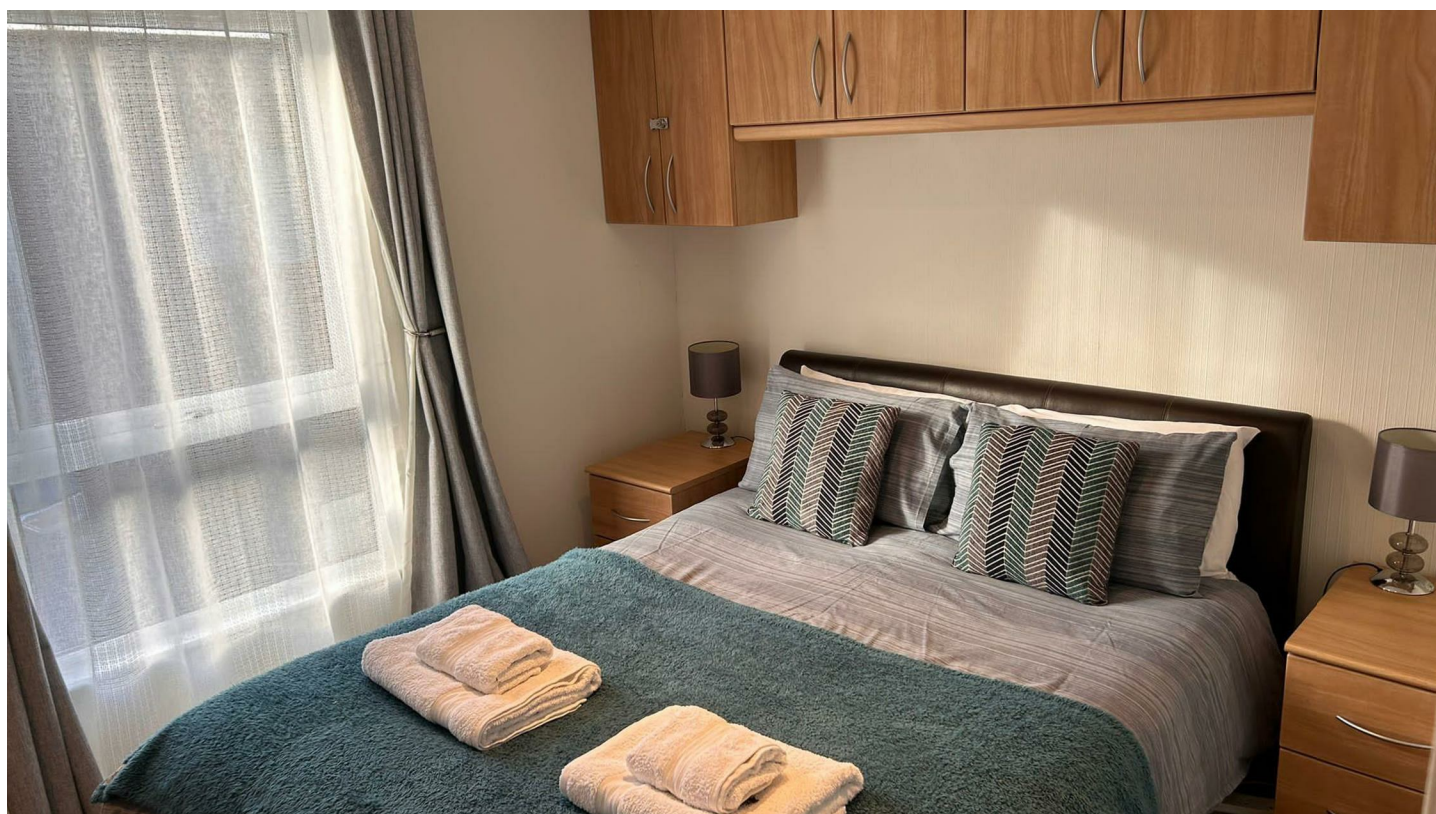
# Patterdale Road, Windermere LA23 1PA

This superb lodge enjoys one of the most desirable spots at Limefitt Park, with lovely far reaching views of the Troutbeck Valley from inside the lodge and a spacious newly replaced outside decking area. Its peaceful location is not overlooked by other lodges and benefits from the sunshine on the deck through most of the daytime during the summer. It is a contemporary styled lodge with the benefit of a private car parking space.



Council Tax  
Band: Exempt

Tenure: Leasehold













## Notice

Please note we have not tested any apparatus, fixtures, fitting or services. Interested parties must undertake their own investigation into the working order of these items. All measurements stated in this brochure are approximate and photographs provided are for guidance only.

## Viewings

Viewings by arrangement only. Call 01772 633399 to make an appointment.

## EPC Rating:

Misrepresentation Act 1967:- tempoleisure.co.uk looks to ensure that all our sales particulars are accurate and reliable, we believe the above details to be correct but their accuracy cannot be guaranteed and they do not constitute any part of an offer or contract. Any intending purchasers or lessees must satisfy themselves by inspection or otherwise as to the correctness of each statement in these particulars before entering into any formal contract to purchase or to rent this property.