

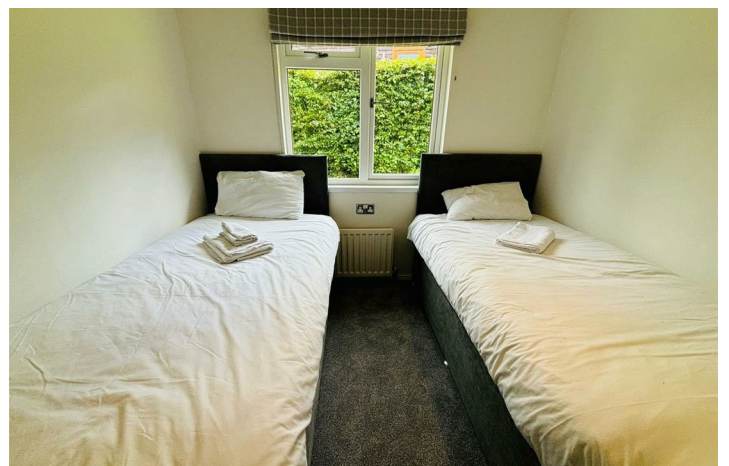
Limefitt Holiday Park, Patterdale Road, Windermere, LA23 1PA

Asking Price £139,995

- Free Pitch Fees Until 2026
- Large L-Shaped Decking with Glass Panel Frontage
- Recent Refurbishment
- Modern Open Plan Living Area
- ****REDUCED****
- Surrounding Views of the Countryside
- 2 Spacious Bedrooms
- Other Homes are Available on this Park, Contact Us for More Information & Prices

Patterdale Road, Windermere LA23 1PA

A beautiful open plan living space, which has a stylish set of French doors opening to your outside space, includes a large kitchen fitted with plenty of unit space, a built-in fridge freezer, microwave, oven and hobs, and even includes a dishwasher. There is a separate utility storage cupboard in the hallway. It also features a 4-seater dining table, two 2-seater sofas, and a cosy fireplace. The master bedroom has a king-sized bed, plenty of free-standing storage and a Jack and Jill entrance to the main bathroom containing a shower, basin and WC. The second bedroom, which has two 3ft single beds, a wardrobe and bed side table. Viewing highly recommended.



Viewings

Viewings by arrangement only. Call 01772 633399 to make an appointment.



Notice

Please note we have not tested any apparatus, fixtures, fitting or services. Interested parties must undertake their own investigation into the working order of these items. All measurements stated in this brochure are approximate and photographs provided are for guidance only. We are advised that the property is subject to site fees.

Terms & Conditions Misrepresentation Act 1967:-

tempoleisure.co.uk looks to ensure that all our sales particulars are accurate and reliable, we believe the above details to be correct but their accuracy cannot be guaranteed and they do not constitute any part of an offer or contract. Any intending purchasers or lessees must satisfy themselves by inspection or otherwise as to the correctness of each statement in these particulars before entering into any formal contract to purchase this property.

Arrange A Viewing

If you are interested in viewing a property through tempoleisure.co.uk please call our team on 01772 633399 or email info@tempoleisure.co.uk

Property Listing

If you are thinking of selling your property tempoleisure.co.uk will be more than happy to help, please call our team on 01772 633399 or email info@tempoleisure.co.uk