



Valley Drive

Esh Winning, DH7 9LT

£625 Per Month

New to the market is this pleasant 2 bedroom property in Esh Winning.

Offered on an unfurnished basis and briefly comprising; lounge, kitchen which includes fridge/freezer, washing machine and integrated oven, 2 double bedrooms and a family bathroom. Externally the property has enclosed lawned gardens to the front and rear. Ample street parking is available to the front.

With local amenities such as schools and a good variety of shops within walking distance this property is ideal for both couples and families alike.

Pets considered for £20 extra per month.

Available now

Viewing

Please contact us on 0191386 7539 if you wish to arrange a viewing appointment for this property or require further information.

- 2 large bedrooms
- Large rear garden
- Unfurnished
- Pets considered
- Council tax band A
- Available now



2



1

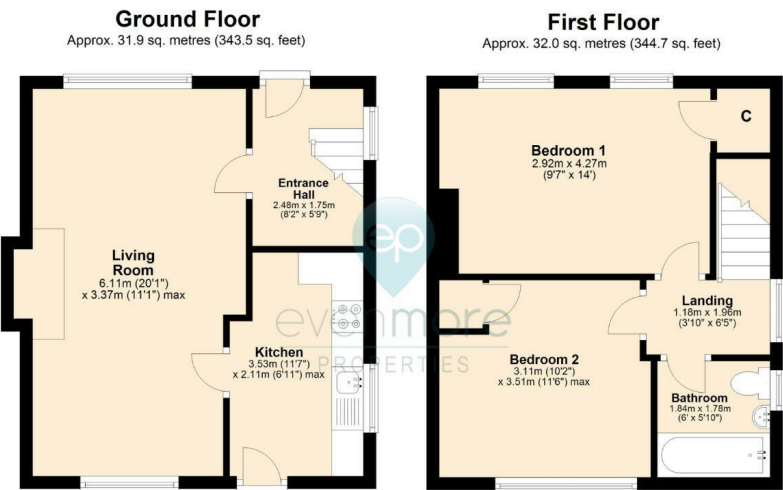


1



C

Floor Plan

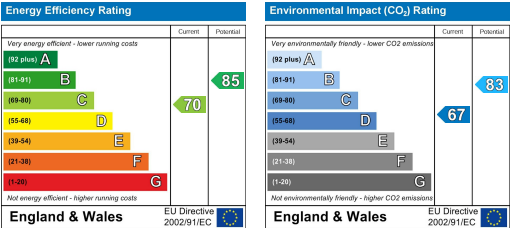


Total area: approx. 63.9 sq. metres (688.2 sq. feet)

Area Map



Energy Efficiency Graph



These particulars, whilst believed to be accurate are set out as a general outline only for guidance and do not constitute any part of an offer or contract. Intending purchasers should not rely on them as statements of representation of fact, but must satisfy themselves by inspection or otherwise as to their accuracy. No person in this firm's employment has the authority to make or give any representation or warranty in respect of the property.