



Seaside Lane South

, Peterlee, SR8 3PN

£89,950

Superbly Renovated 3-Bedroom End-Terrace House

Location: Seaside Lane South, Easington

Price: £89,950

Description:

Available now, this comprehensively renovated 3-bed end-terrace house on Seaside Lane South offers modernised living, requiring only your choice of flooring. The extensive refurbishment means the new owner can enjoy contemporary standards with minimal fuss, offering a fantastic home in a popular coastal area location.

The Home:

This property has been thoroughly updated. Work includes new concrete ground floors with a full Wykamol damp proof membrane. It benefits from a complete electrical rewire and new plumbing system. Fresh plasterwork provides surfaces ready for decoration. A new Baxi combi boiler supplies heating and hot water. Features include a contemporary fitted kitchen and a modern white bathroom suite with shower over bath. New internal doors and skirting boards are fitted. There are three well-proportioned bedrooms. Externally, private off-road parking for two vehicles is provided at the rear. Ready for occupation - just

- Freehold, 3-bed end-terrace
- Fully renovated
- New floors, damp-proofed
- Complete re-wire & plumbing
- New Combi Boiler
- New kitchen & bathroom
- Rear off-road parking
- No chain, quick sale possible

Viewing

Please contact us on 0191386 7539 if you wish to arrange a viewing appointment for this property or require further information.



3



1

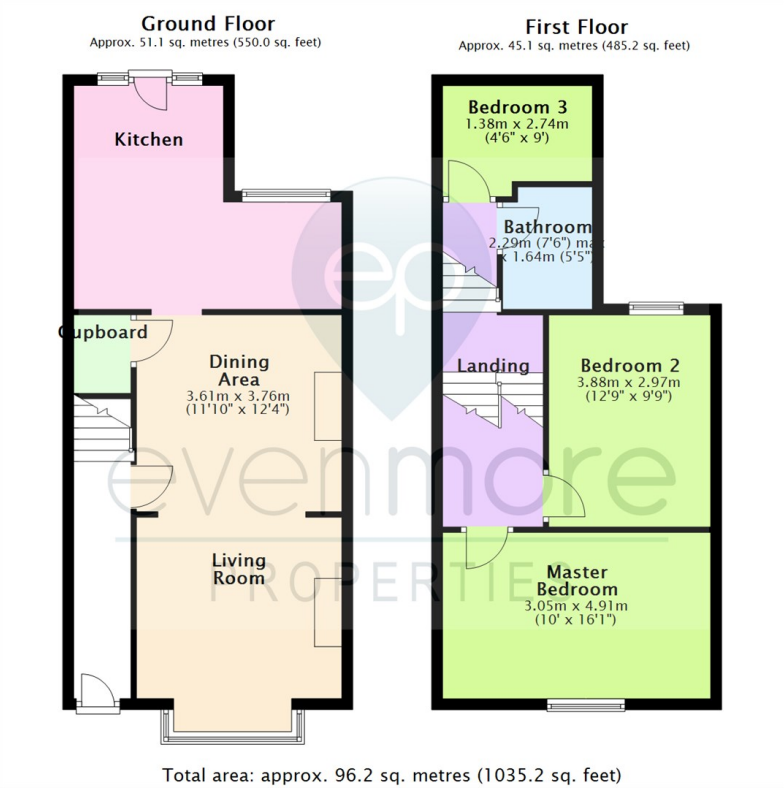


2



C

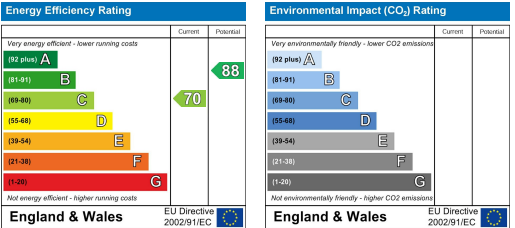
Floor Plan



Area Map



Energy Efficiency Graph



These particulars, whilst believed to be accurate are set out as a general outline only for guidance and do not constitute any part of an offer or contract. Intending purchasers should not rely on them as statements of representation of fact, but must satisfy themselves by inspection or otherwise as to their accuracy. No person in this firm's employment has the authority to make or give any representation or warranty in respect of the property.