



Neville Terrace

, Durham, DH14AH

£159,950

New to the sales market is this 2 bedroom, mid terraced property in Crossgate Moor.

The property is situated in a great location for both families and professionals with short walks to schools and the city centre. It also has the benefit of a gated rear yard which could be used as parking for a small car. On street parking is also available nearby.

The ground floor comprises of the lounge and kitchen. Two good sized bedrooms and the family bathroom can be found on the first floor.

This property would also be of interest to potential investors.

- Close to schools and the city centre
- Potential investment opportunity
- EPC C
- Gated rear yard which could be used for parking for small car
- On street parking available nearby
- Good sized living spaces

Viewing

Please contact us on 0191386 7539 if you wish to arrange a viewing appointment for this property or require further information.



2



1



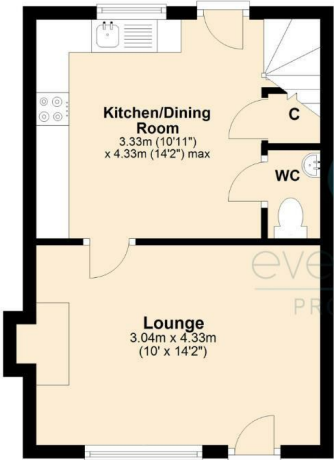
1



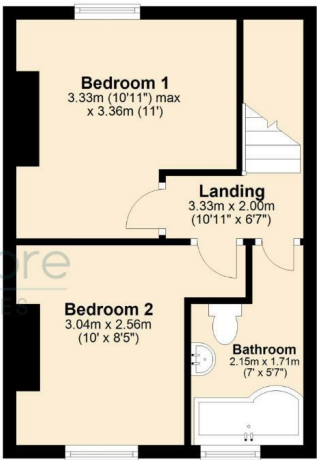
C

Floor Plan

Ground Floor
Approx. 28.0 sq. metres (301.3 sq. feet)



First Floor
Approx. 28.3 sq. metres (304.5 sq. feet)

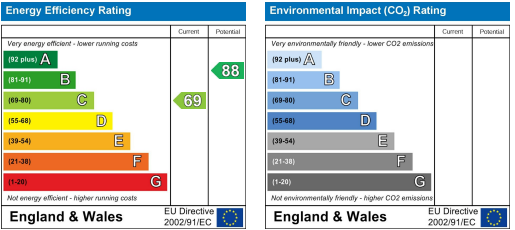


Total area: approx. 56.3 sq. metres (605.8 sq. feet)

Area Map



Energy Efficiency Graph



These particulars, whilst believed to be accurate are set out as a general outline only for guidance and do not constitute any part of an offer or contract. Intending purchasers should not rely on them as statements of representation of fact, but must satisfy themselves by inspection or otherwise as to their accuracy. No person in this firm's employment has the authority to make or give any representation or warranty in respect of the property.