
LITTA FORD | 4 BEDROOM HOUSE | 109m²

PHASE 1C - PLOTS 99, 100, 101, 105, 137, 138, 139, 140

- 4 bedrooms
- Kitchen/dining room
- Master bedroom with en-suite
- Downstairs cloakroom
- Garage and parking
- Lawned garden



A four bedroom house with entrance hall that leads you to a downstairs cloakroom, separate lounge and kitchen/dining room with double doors leading out into the garden. The first floor benefits from a master bedroom with en-suite, bedrooms two, three and four and a separate bathroom.

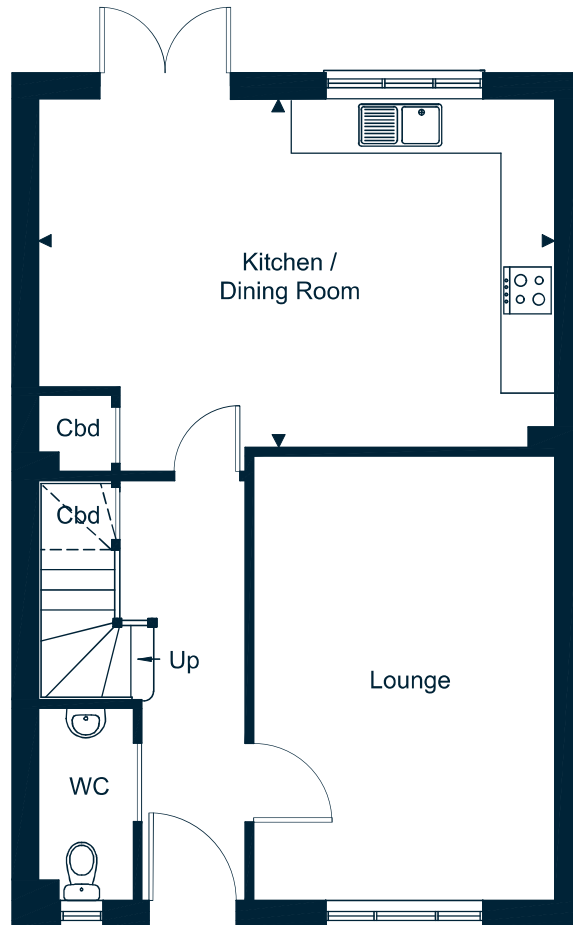
GROUND FLOOR

KITCHEN/ DINING ROOM

5.9 x 3.5m
(19'3" x 12'11")

LOUNGE

3.4 x 5m
(11'3" x 16'6")



FIRST FLOOR

BEDROOM 1

3.2 x 3.9m
(10'4" x 12'7")

BEDROOM 2

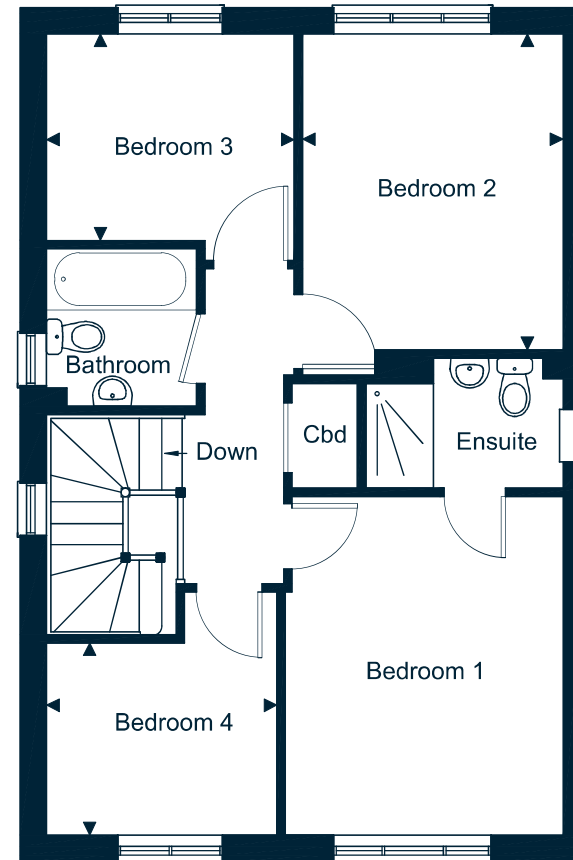
3 x 3.6m
(9'8" x 11'10")

BEDROOM 3

2.8 x 2.4m
(9'2" x 8'0")

BEDROOM 4

2.6 x 2.1m
(8'7" x 6'9")



The information provided is for guidance only. It is not part of a contract or offer. All dimensions are subject to construction tolerances and images vary between plots. Windows, external finishes and landscaping may vary. It is important that purchasers ensure that they are happy with the details of their plot with the Sales Advisor. Boundary treatments altered for artistic effects. All information is correct at time of print but is subject to change.